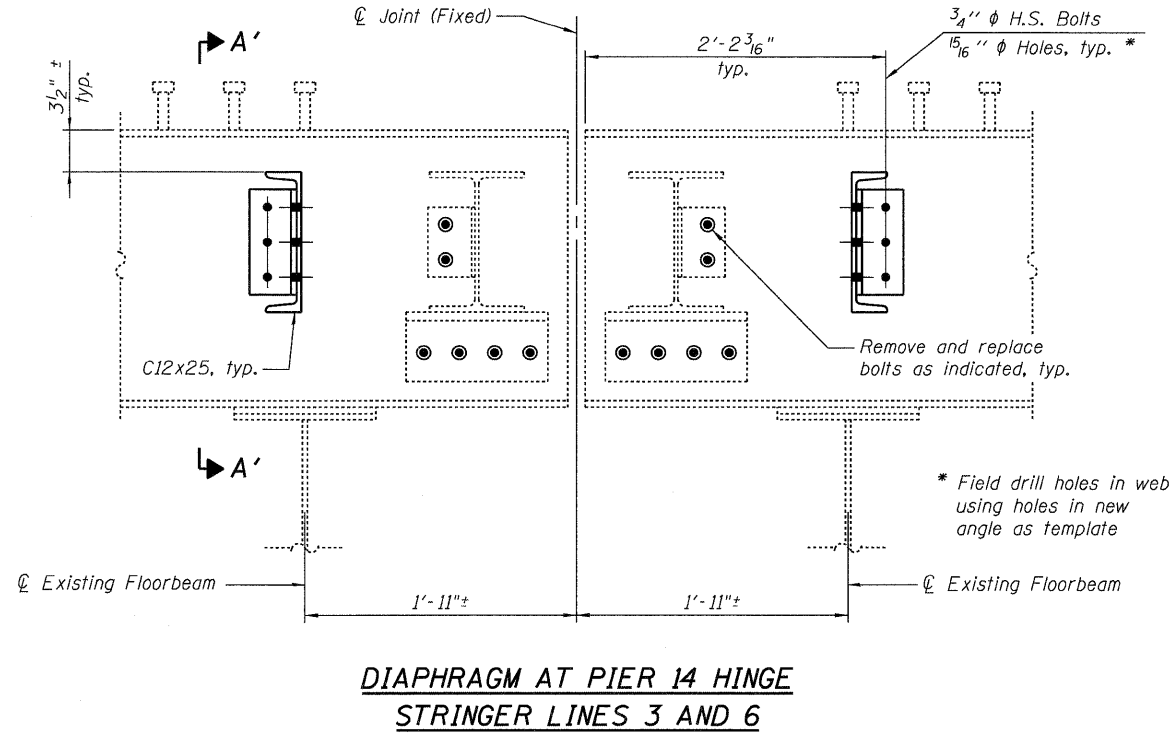
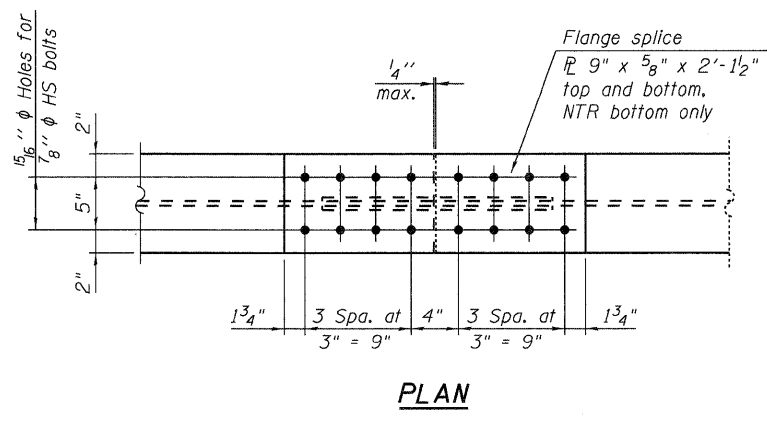


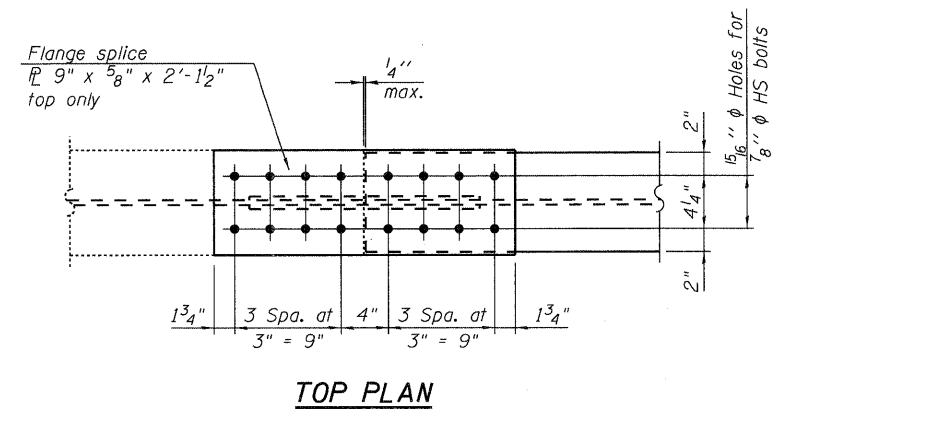
STATE OF ILLINOIS
DEPARTMENT OF TRANSPORTATION



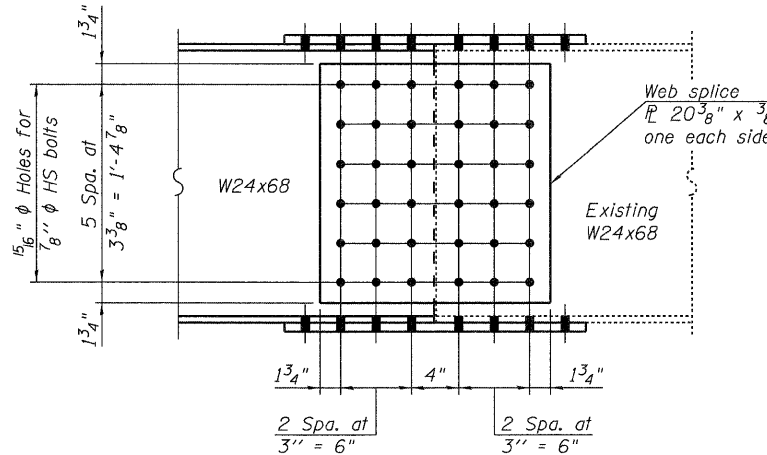
**DIAPHRAGM AT PIER 14 HINGE
STRINGER LINES 3 AND 6**



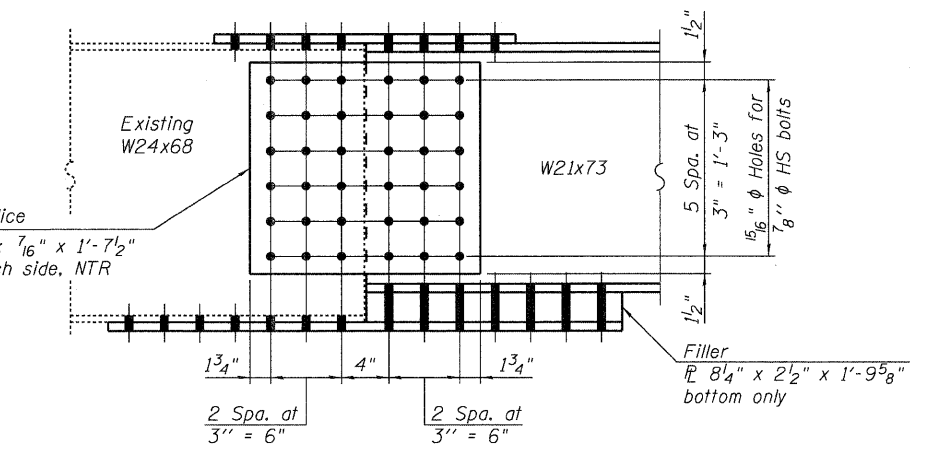
PLAN



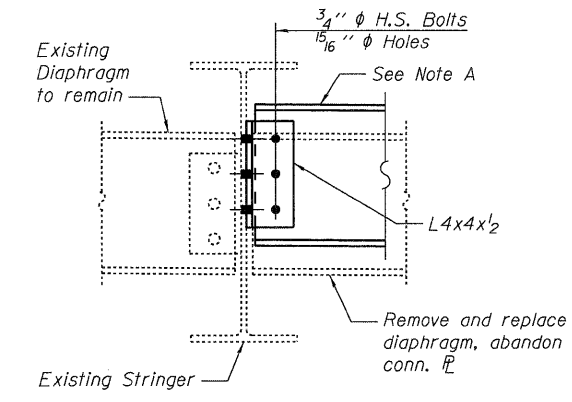
TOP PLAN



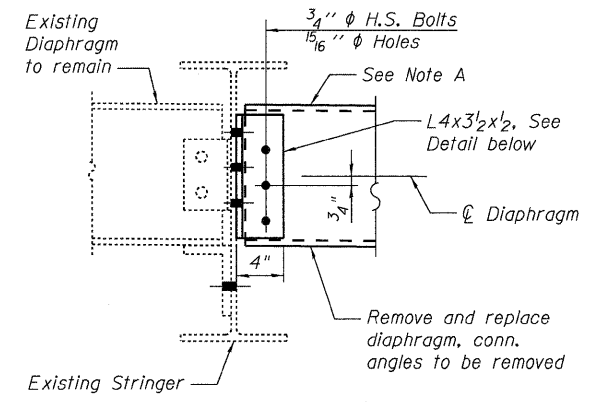
ELEVATION



ELEVATION

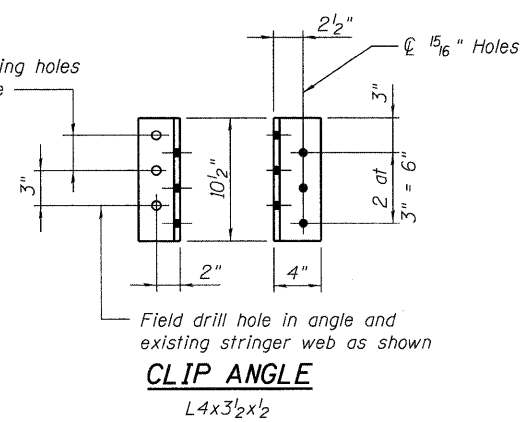


**SECTION A-A
Shown**
SECTION A'-A'
Similar



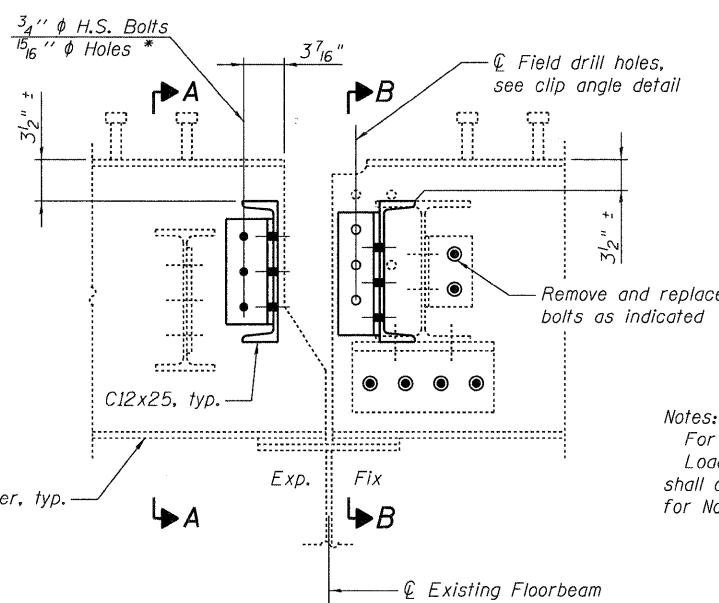
SECTION B-B

Note A:
Slope to match existing
floorbeam slope

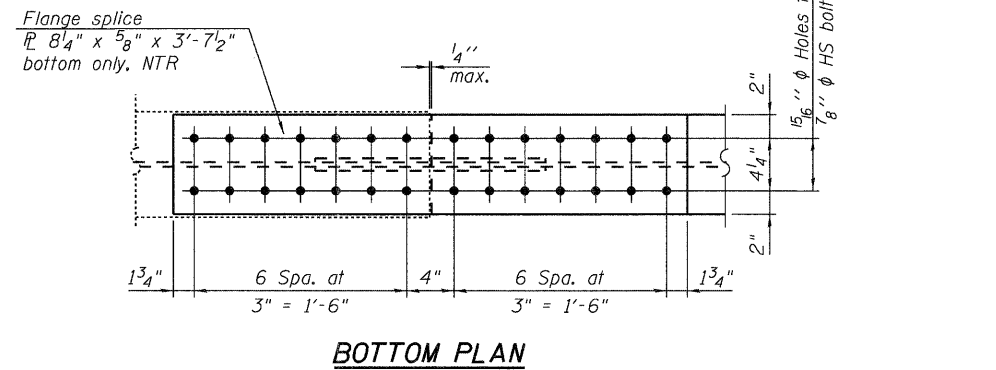


CLIP ANGLE
L4x3 1/2 x 1/2

SPLICE S1 DETAIL
148 Required



**DIAPHRAGM CONNECTION AT RELIEF JOINT
STRINGER LINES 3 AND 6**



SPLICE S2 DETAIL
100 Required

Notes:
For Bill of Material, see Sheet No. 11 of 33.
Load carrying components designated "NTR"
shall conform to the supplemental requirement
for Notch Toughness, Zone 2.

STRINGER END REPAIR DETAILS - 4
I-80 OVER
MISSISSIPPI RIVER
STRUCTURE NO. 081-0011

DESIGNED	YSS
CHECKED	ACK
DRAWN	PRC
CHECKED	YSS
09/17/09	



SHEET NO. 14 33 SHEETS	F.A.I. RTE.	SECTION	COUNTY	TOTAL SHEETS	SHEET NO.
	80	(81-1B)M-4	ROCK ISLAND	75	41
SN 081-0011			CONTRACT NO. 64F31		
FED. ROAD DIST. NO. 7 ILLINOIS FED. AID PROJECT					