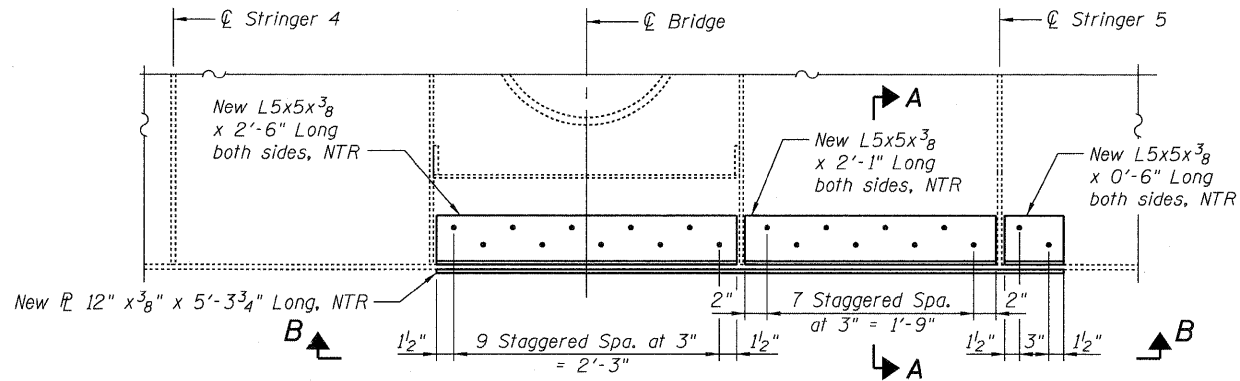
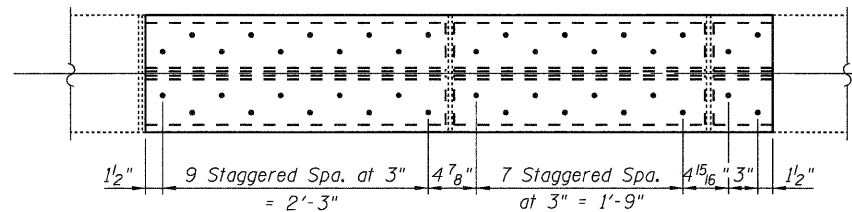


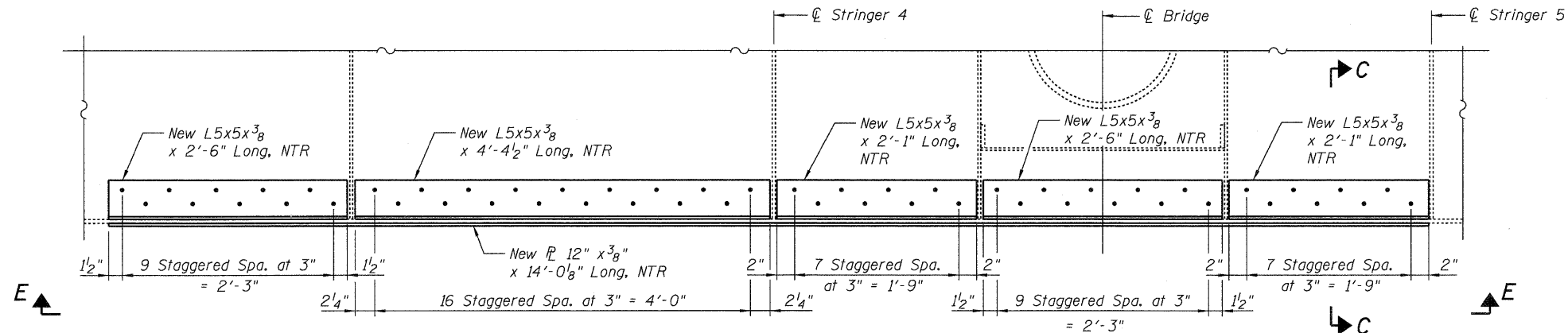
STATE OF ILLINOIS
DEPARTMENT OF TRANSPORTATION



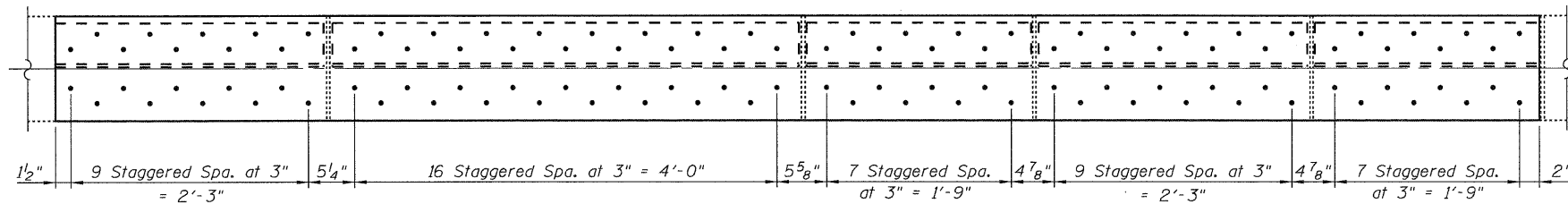
STRUCTURAL STEEL REPAIR B
SPANS 13 AND 14, FLOORBEAM 7
(Looking South)



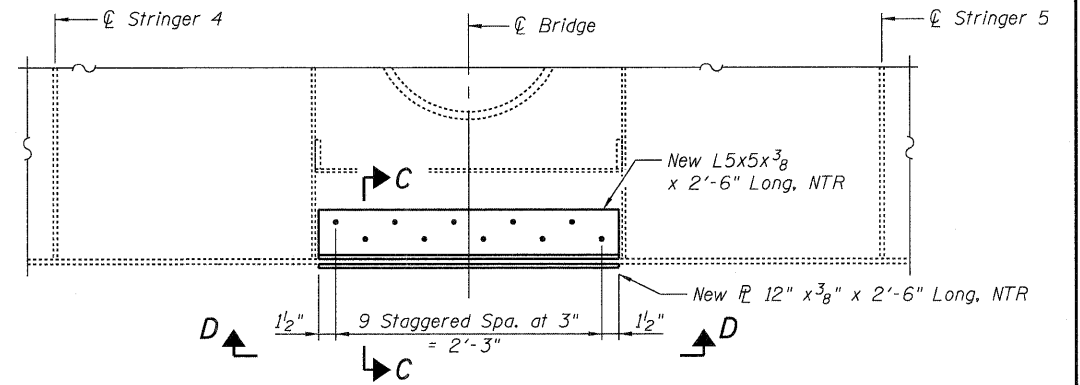
VIEW B-B



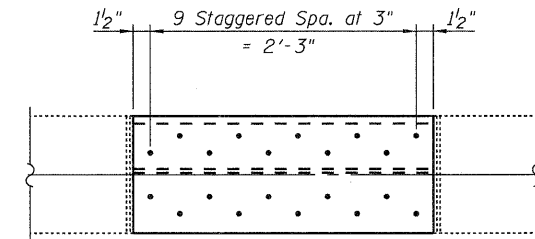
STRUCTURAL STEEL REPAIR G
SPAN 20, FLOORBEAM 1
(Looking South)



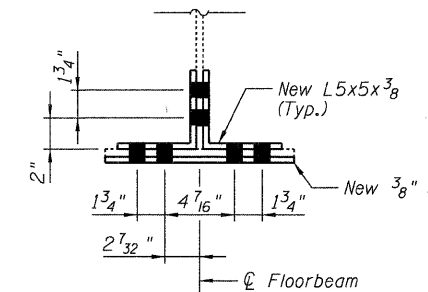
VIEW E-E



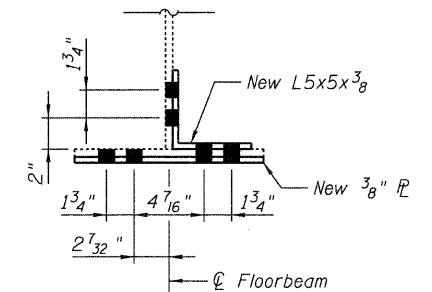
STRUCTURAL STEEL REPAIR H
SPAN 24, FLOORBEAM 4
(Looking South)



VIEW D-D



SECTION A-A



SECTION C-C

Note:
Gaps between the existing steel and the new steel angles and/or cover plates shall be sealed with an approval polyurethane sealant. The sealant shall be compatible with the proposed paint system and shall be submitted to the Engineer for approval prior to use. All costs associated with the installation of the sealant shall be included with the cost for Structural Steel Repair.

Notes:
Grind heels of angles as required for installation.
Field drill holes in existing floorbeams and new plates using new angles as templates.
Load carrying components designated "NTR" shall conform to the supplemental requirement for Notch Toughness, Zone 2.

BILL OF MATERIAL

Item	Unit	Total
Structural Steel Repair	Pound	870

**MISCELLANEOUS STEEL
REPAIR DETAILS - 2
I-80 OVER
MISSISSIPPI RIVER
STRUCTURE NO. 081-0011**

DESIGNED	RLM
CHECKED	DWP
DRAWN	AEC
CHECKED	RLM
09/17/09	



SHEET NO. 18 33 SHEETS	F.A.I. RTE. 80	SECTION (81-1B)M-4	COUNTY ROCK ISLAND	TOTAL SHEETS 75	SHEET NO. 45
	SN 081-0011		CONTRACT NO. 64F31		
FED. ROAD DIST. NO. 7 ILLINOIS FED. AID PROJECT					