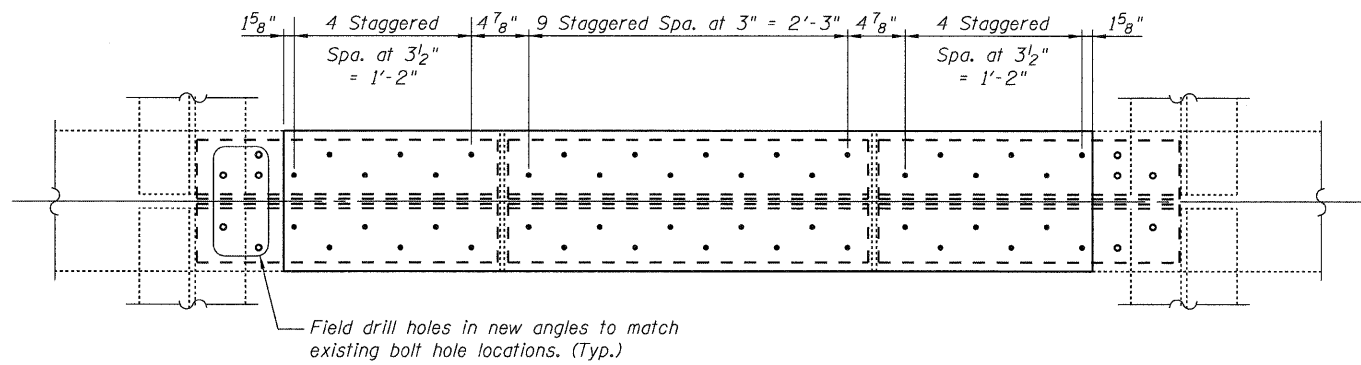
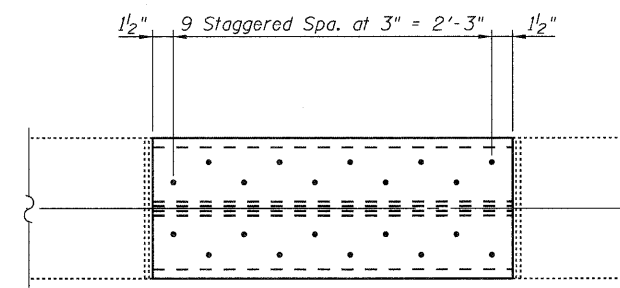


STATE OF ILLINOIS
DEPARTMENT OF TRANSPORTATION



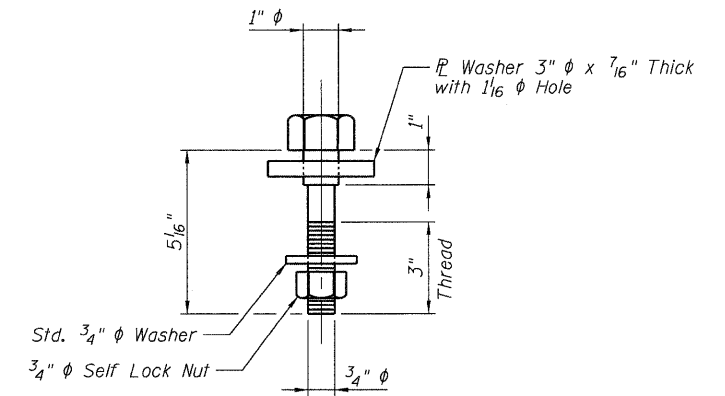
VIEW B-B

Note:
Stringer base plates not shown for clarity.

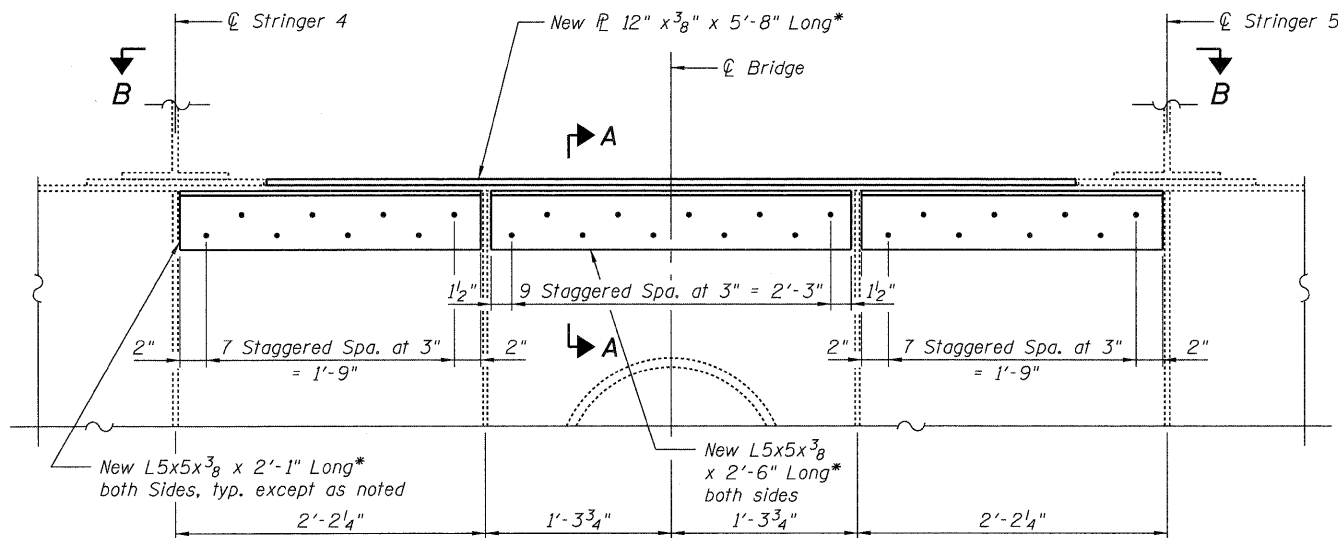


VIEW C-C

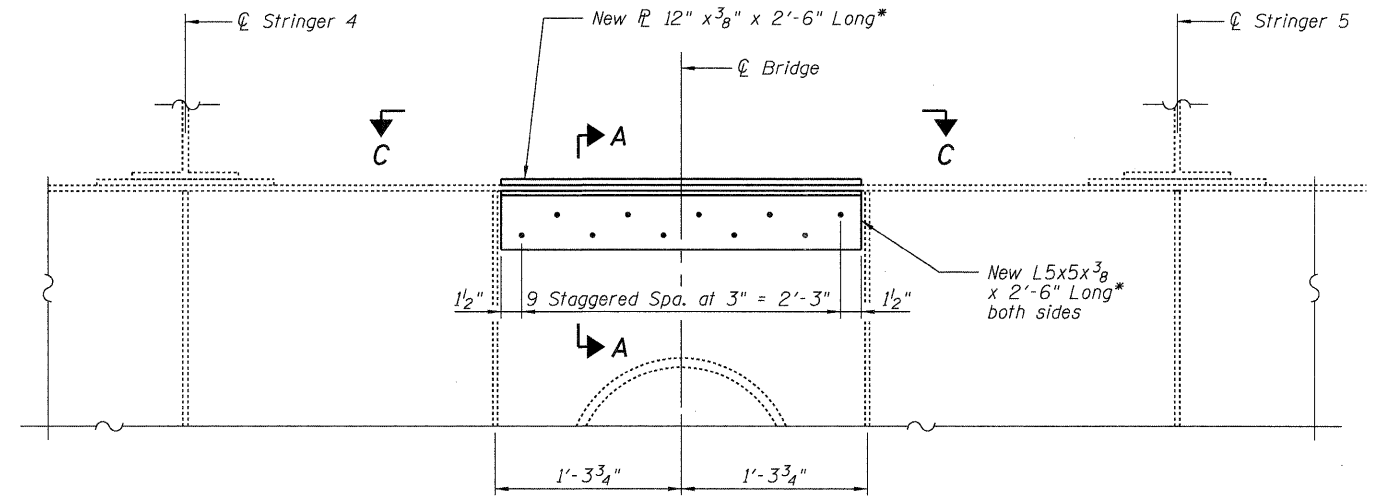
Note:
Gaps between the existing steel and the new steel angles and/or cover plates shall be sealed with an approval polyurethane sealant. The sealant shall be compatible with the proposed paint system and shall be submitted to the Engineer for approval prior to use. All costs associated with the installation of the sealant shall be included with the cost for Structural Steel Repair.



NEW SHOULDER BOLTS TO ACCOMODATE REPAIR ANGLE AT EXPANSION SIDE STRINGER CONNECTIONS AT SPAN 18, FLOORBEAM 6
(2 Required)



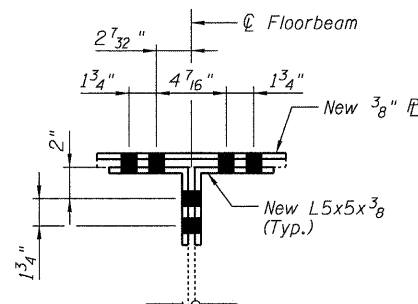
STRUCTURAL STEEL REPAIR C
SPAN 18, FLOORBEAM 6
(Looking South)



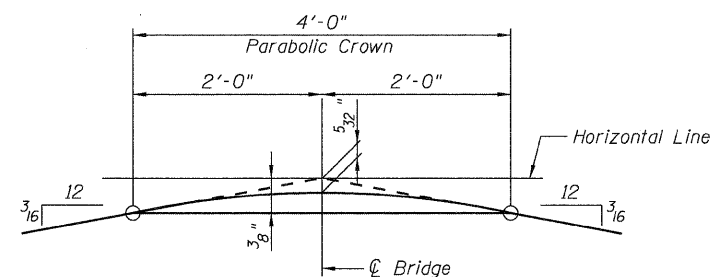
STRUCTURAL STEEL REPAIR D
SPAN 19, FLOORBEAM 3
(Looking South)

Notes:
Grind heels of angles as required for installation.
Field drill holes in existing floorbeams and new plates using new angles as templates.

* Fabricate new plates and angles for top flange repairs to match existing top flange profile. See Floorbeam Top Flange Profile detail.



SECTION A-A



FLOORBEAM TOP FLANGE PROFILE

BILL OF MATERIAL

Item	Unit	Total
Structural Steel Repair	Pound	450

MISCELLANEOUS STEEL REPAIR DETAILS - 3
I-80 OVER MISSISSIPPI RIVER
STRUCTURE NO. 081-0011

DESIGNED	RLM
CHECKED	DWP
DRAWN	AEC
CHECKED	RLM
09/17/09	



SHEET NO. 19 33 SHEETS	F.A.I. RTE.	SECTION	COUNTY	TOTAL SHEETS	SHEET NO.
	80	(81-1B)M-4	ROCK ISLAND	75	46
FED. ROAD DIST. NO. 7 ILLINOIS			CONTRACT NO. 64F31		
FED. AID PROJECT					