

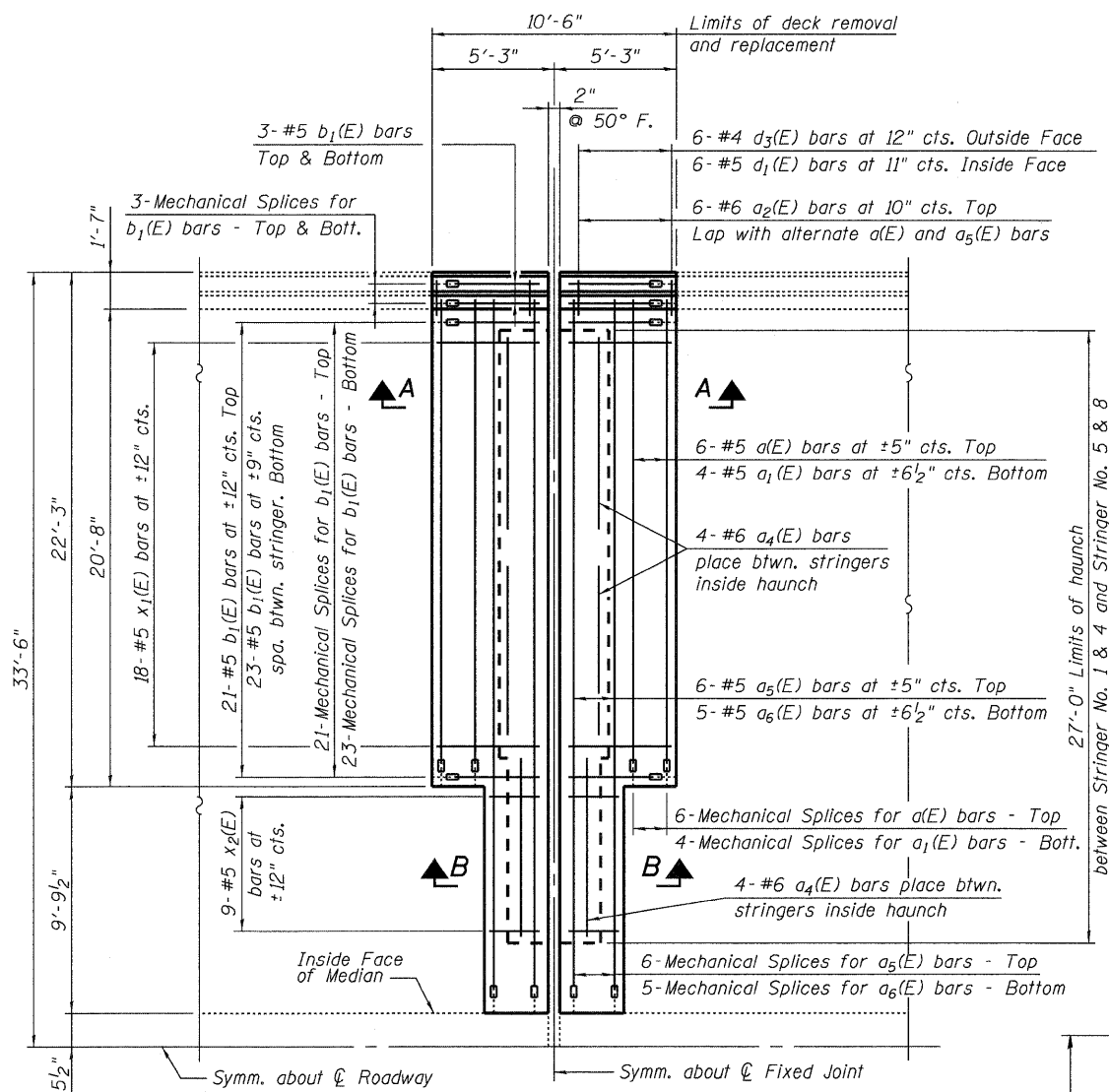
STATE OF ILLINOIS
DEPARTMENT OF TRANSPORTATION

Note:
For details of preformed joint strip seal,
See Sheet No. 30 of 33.

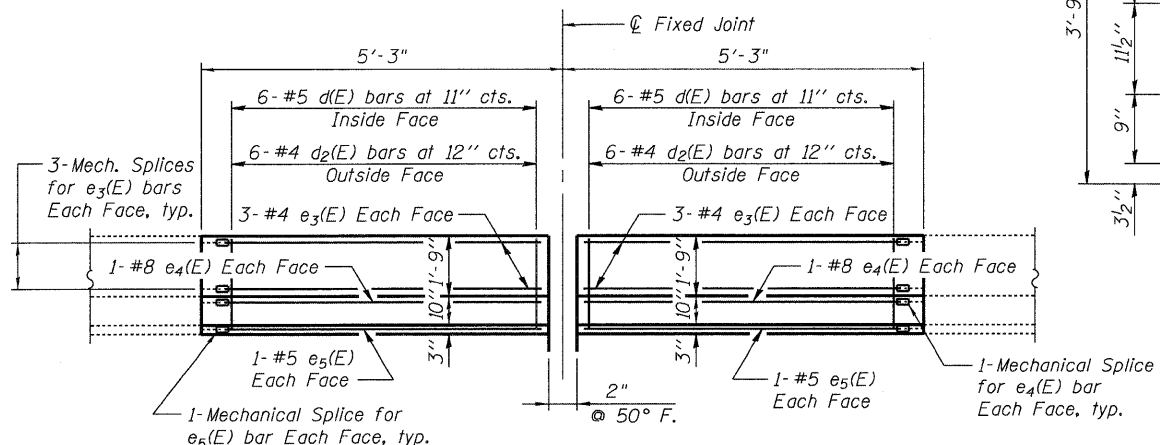
**SUPERSTRUCTURE
BILL OF MATERIAL**

Bar	No.	Size	Length	Shape
* d(E)	28	#5	21'-3"	—
** a ₁ (E)	20	#5	20'-6"	—
a ₂ (E)	24	#6	6'-0"	—
a ₃ (E)	16	#5	2'-0"	—
a ₄ (E)	48	#6	10'-1"	⌋
* a ₅ (E)	28	#5	31'-1"	—
*** a ₆ (E)	24	#5	30'-4"	—
b ₁ (E)	200	#5	4'-5"	—
d(E)	24	#5	3'-0"	⌋
d ₁ (E)	24	#5	2'-7"	⌋
d ₂ (E)	24	#4	3'-0"	⌋
d ₃ (E)	24	#4	3'-11"	⌋
e ₃ (E)	24	#4	4'-5"	—
e ₄ (E)	8	#8	4'-5"	—
e ₅ (E)	8	#5	4'-5"	—
x ₁ (E)	72	#5	6'-1"	⌋
x ₂ (E)	36	#5	3'-9"	⌋
Reinforcement Bars, Epoxy Coated	Pound	5670		
Concrete Removal	Cu. Yd.	15.7		
Concrete Superstructure	Cu. Yd.	19.0		
Mechanical Splice	Each	340		

Notes:
Reinforcement bars designated (E) shall be epoxy coated.
* 1 additional bar included, per set of 6, to make up for possible shortage.
** 1 additional bar included, per set of 4, to make up for possible shortage.
*** 1 additional bar included per set of 5, to make up for possible shortage.



**PARTIAL DECK PLAN AT FIXED JOINT
FOR HINGE 14**

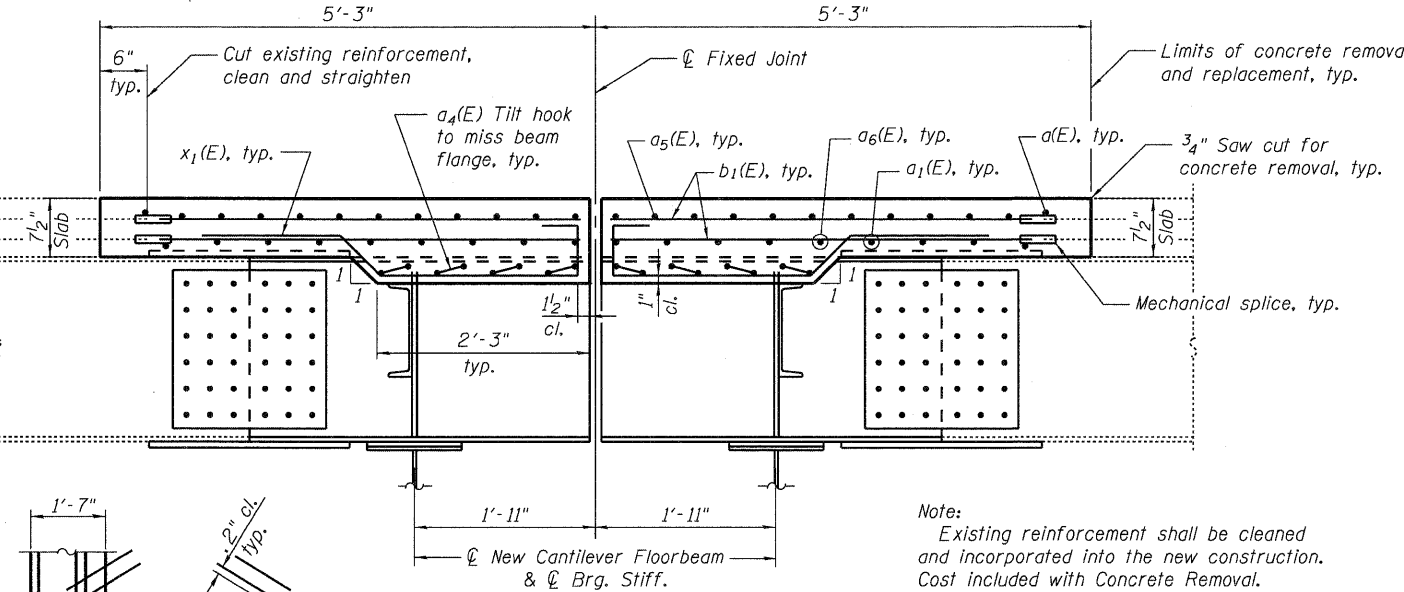


INSIDE ELEVATION OF PARAPET

DESIGNED	YSS
CHECKED	DWP
DRAWN	PRC
CHECKED	YSS



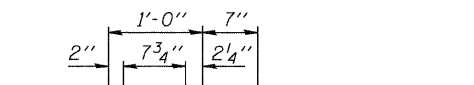
Note:
Remove and replace conduit runs in parapet.
Cost included with Concrete Superstructure.



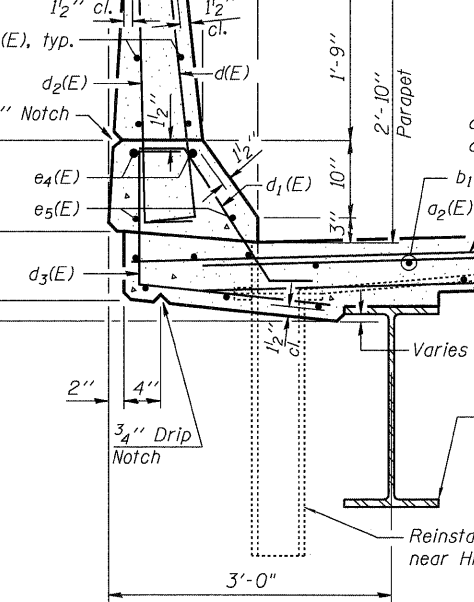
SECTION A-A

PLAN AT SCUPPER

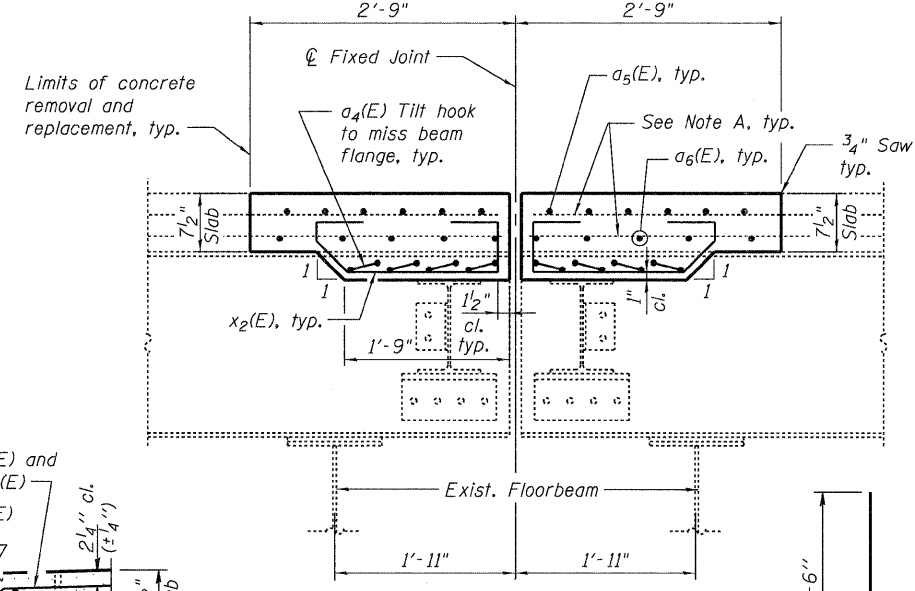
2 Locations
Note: Cut longitudinal reinforcement to clear drainage scuppers.



PLAN AT SCUPPER

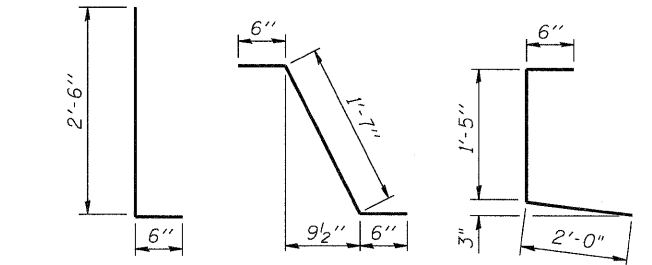


**SECTION THRU PARAPET
Showing Scupper**

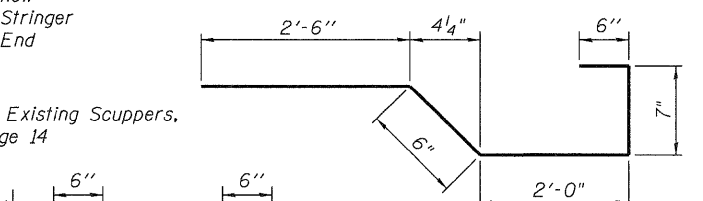


SECTION B-B

Note A:
Existing longitudinal slab reinforcement to remain in place, clean, straighten and incorporate into repair

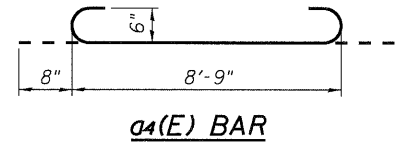


BARS d(E) & d₂(E) BAR d₁(E) BAR d₃(E)



BAR x₁(E)

BAR x₂(E)



a₄(E) BAR

**PARTIAL DECK REMOVAL AND
REPLACEMENT AT HINGE 14
I-80 OVER
MISSISSIPPI RIVER
STRUCTURE NO. 081-0011**

SHEET NO. 24	F.A.I. RTE. 80	SECTION (81-1B)M-4	COUNTY ROCK ISLAND	TOTAL SHEETS 75	SHEET NO. 51
33 SHEETS	SN 081-0011		CONTRACT NO. 64F31		
FED. ROAD DIST. NO. 7		ILLINOIS		FED. AID PROJECT	

09/17/09