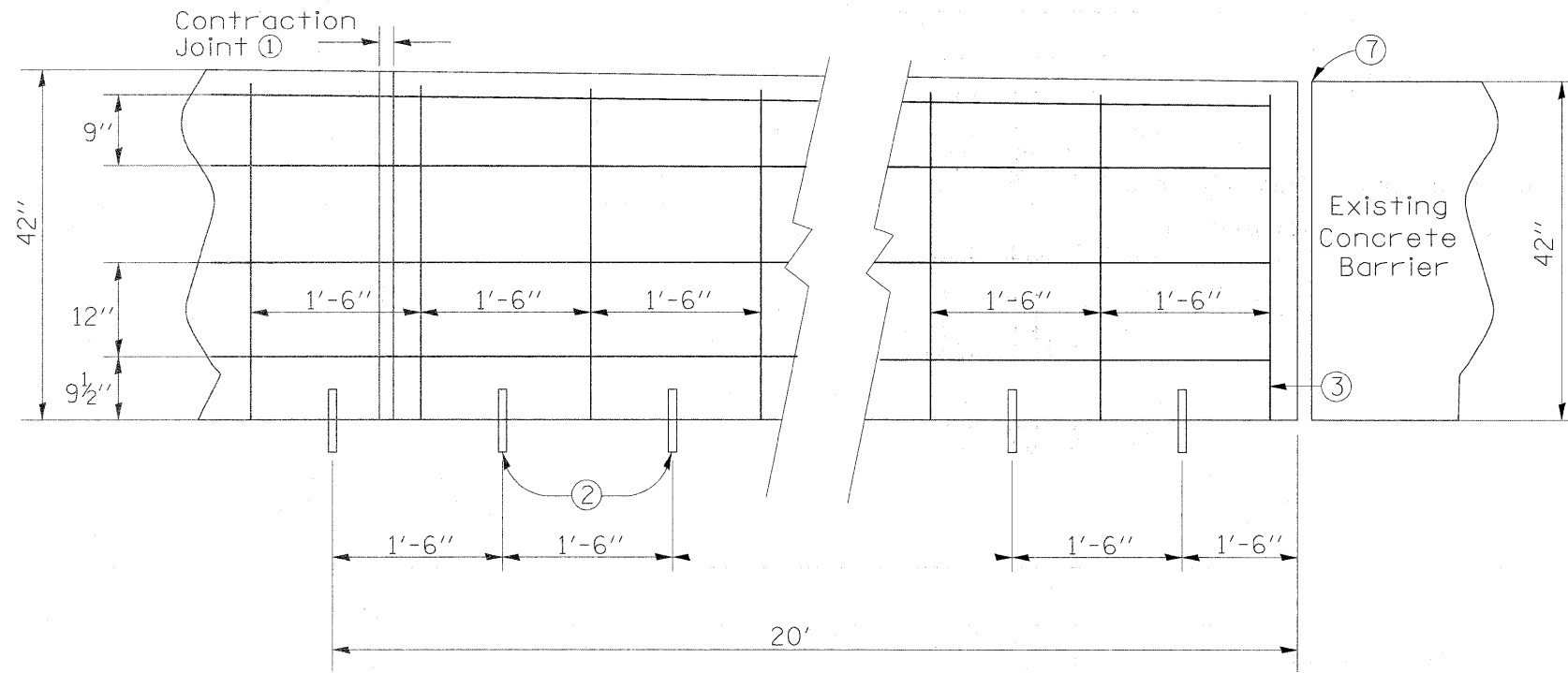
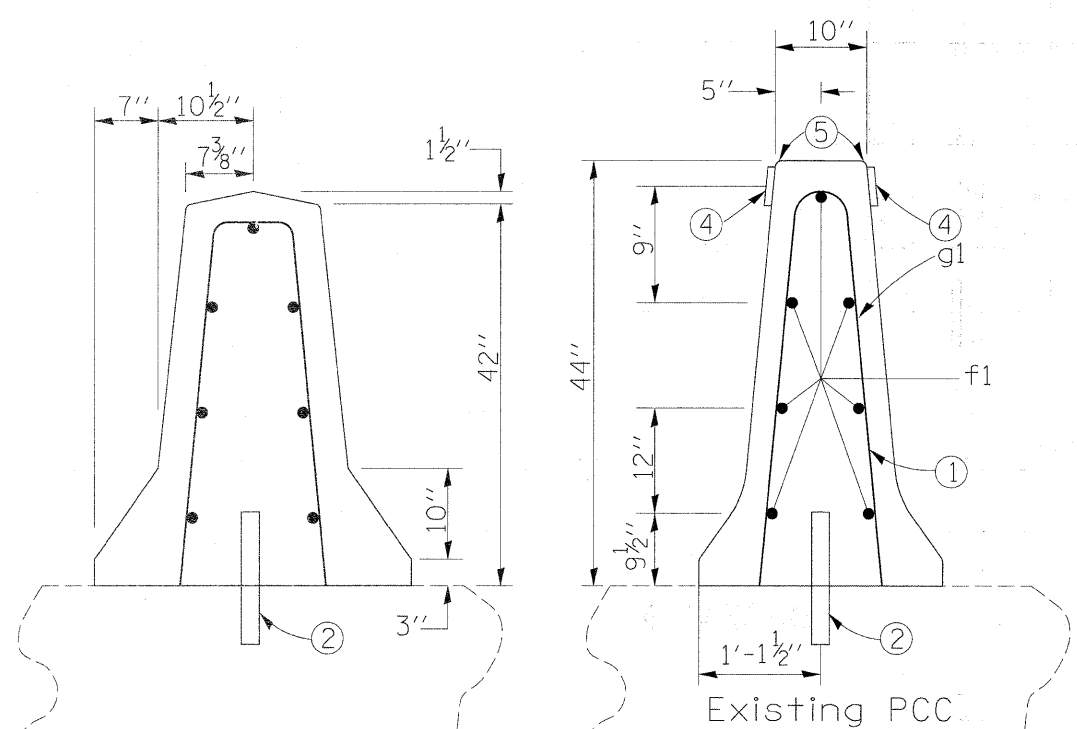


GENERAL NOTES:

- ① Use minimum cover of 2 inches for rebars.
- ② 1 inch diameter deformed bars or sufficient length to ensure 6 inch minimum embedment in rail and supporting surface. Bars shall be either installed in supporting surface when placed or installed in drilled holes using polymer grout or hydraulic cement grout. Dower location may be adjusted 6 inches to avoid bridge approach reinforcement.
- ③ Barrier reinforcement shall be anchored to prevent movement. Each section shall be secured at the front, back, and at 3'-6" minimum intervals. Method of anchorage shall be approved by the Engineer.
- ④ Barrier Markers
- ⑤ All exposed corners are to be filleted with a  $\frac{3}{4}$ " dressed and beveled strip.
- ⑥ Contraction Joints shall be sawed as indicated hereon. Where abutting sections are placed as separate pours, a butt joint may be used. Longitudinal reinforcement shall be extended in the abutting section a minimum of 1'-6" (spanning the butt joint).
- ⑦ Expansion joint. Width of joint shall match the expansion joint between the bridge and bridge approach. Expansion material shall conform to shape of barrier. No sealer is required.
- ⑧ The shape and height of the barrier shall be smoothly transitioned from the existing bridge rail to the new median barrier.
- ⑨ This work shall be paid for at the contract unit price per cu yd as Concrete Barrier Wall (Special).

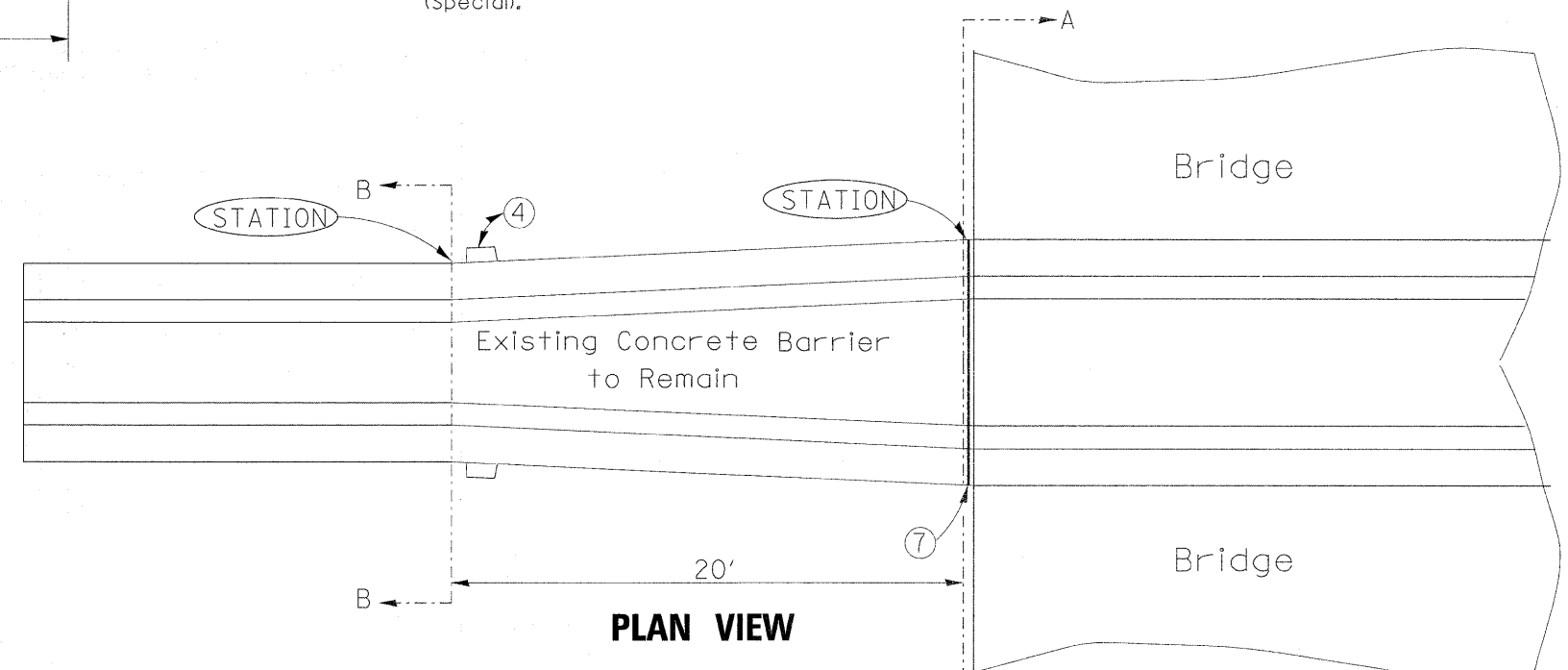


ELEVATION

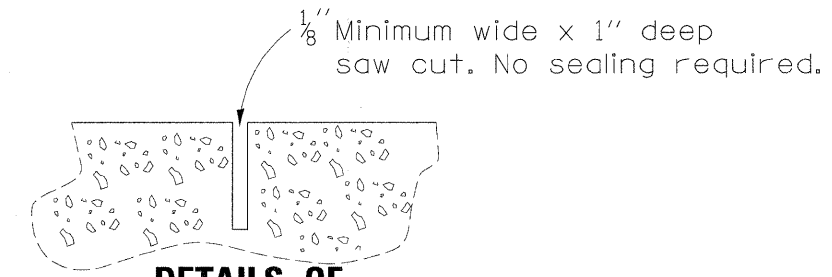


SECTION A-A  
Existing Bridge Rail ⑧

SECTION B-B  
New Median Barrier ⑧



PLAN VIEW



DETAILS OF  
CONTRACTION JOINT

Saw cut top and front face

FILE NAME =	USER NAME = cushmanbw	DESIGNED -	REVISED -	<b>STATE OF ILLINOIS DEPARTMENT OF TRANSPORTATION</b>	<b>CONCRETE MEDIAN BARRIER TRANSITION TO EXISTING BRIDGE BARRIER</b>				F.A.I. RTE.	SECTION	COUNTY	TOTAL SHEETS	SHEET NO.
c:\pwwork\pwwork\cushmanbw\d8149192\d8149192.spl.dgn		DRAWN -	REVISED -		80	(81-1B) M-4	ROCK ISLAND	75	62				
PLOT SCALE = 1/8" = 1'-0"		CHECKED -	REVISED -		CONTRACT NO. 64F31								
PLOT DATE = Thu Sep 17 08:56:24 2009		DATE -	REVISED -		SCALE:	SHEET NO.	OF	SHEETS	STA.	TO STA.	FED. ROAD DIST. NO.	ILLINOIS FED. AID PROJECT	