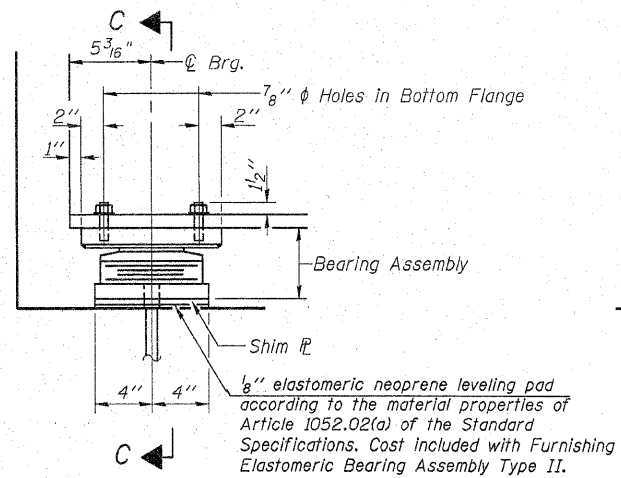


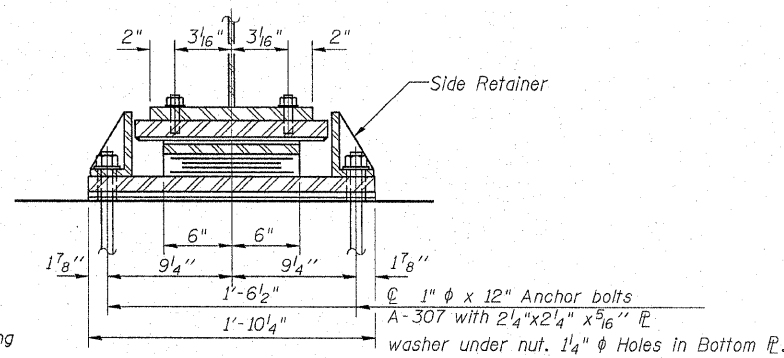
STATE OF ILLINOIS
DEPARTMENT OF TRANSPORTATION

F.A.P. RTE.	SECTION	COUNTY	TOTAL SHEETS	SHEET NO.
301	1-HBR-2F	WINNEBAGO	29	15
FED. ROAD DIST. NO. 7	ILLINOIS	CONTRACT NO. 64F62		

SHEET NO. 13
27 SHEETS

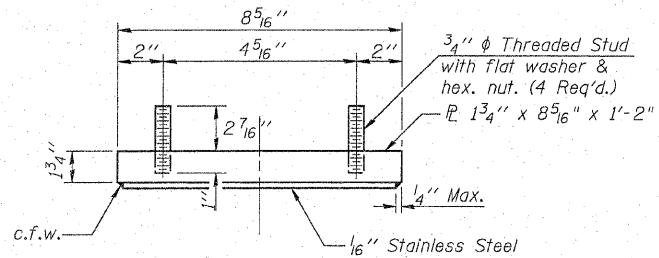


ELEVATION AT ABUT.

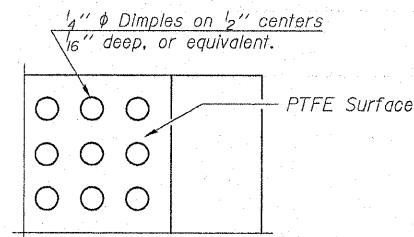


SECTION C-C

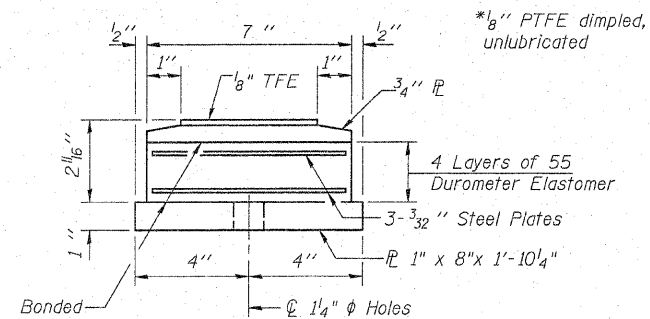
TYPE II ELASTOMERIC EXP. BRG.



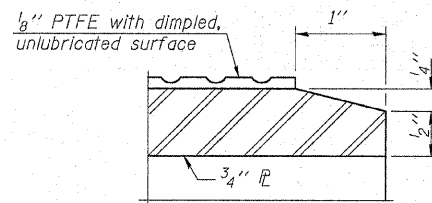
TOP BEARING ASSEMBLY



PLAN-PTFE SURFACE

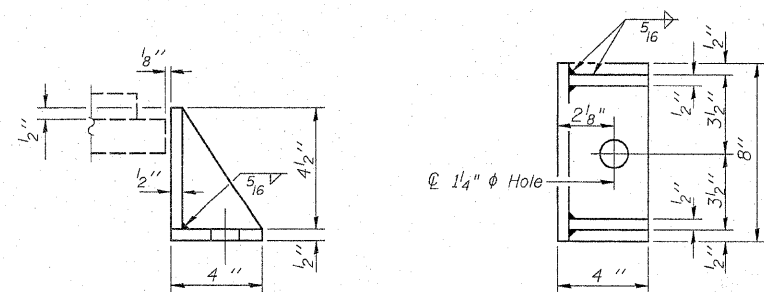


BOTTOM BEARING ASSEMBLY



SECTION THRU PTFE

Notes:
Side retainers and other steel members required for the bearing assembly shall be included in the cost of Furnishing Elastomeric Bearing Assembly, Type II.
The 1/8" PTFE sheet shall be bonded directly to the top steel plate with a two-component, medium viscosity epoxy resin, conforming to the requirements of the Federal Specification MMM-A-134, Type I. The bond agent shall be applied on the full area of the contact surfaces.
Bonding of 1/8" PTFE sheet during vulcanizing process will be permitted provided the process and method of adjusting assembly height is approved by the Engineer.
Two 1/8" in. adjusting shims shall be provided for each bearing in addition to all other plates or shims and placed as shown on bearing details.
Anchor Bolts not included in this contract.

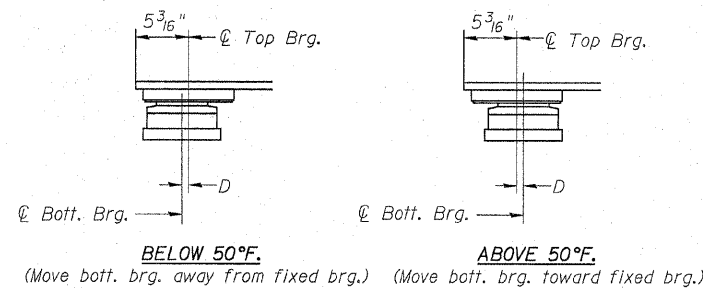


SIDE RETAINER FOR ABUTMENTS

Equivalent rolled angle with stiffeners will be allowed in lieu of welded plates.

DESIGNED	GUN / OAO
CHECKED	FCO
DRAWN	TCS / GUN
CHECKED	FCO

11-1-06



SETTING ANCHOR BOLTS AT EXP. BRG.

D=1/8" per each 100' of expansion for every 15° temp. change from the normal temp. of 50°F.

BILL OF MATERIAL

Item	Unit	Total
Furnishing Elastomeric Bearing Assembly Type II	Each	12

BEARING DETAILS (ABUTMENTS)
MERIDIAN ROAD OVER US 20
F.A.P. 301 (US 20) - SEC. 1-HBR-2F
WINNEBAGO COUNTY
STATION 100+00
STRUCTURE NO. 101-0096

12/07/10 PM 7/22/2009 H:\projects\2945\Structural\Meridian Road\Draws from SD\DCN Files\Final Drawings\2009\1010096-64F62-012-BEARDETALL.dwg