

F.A.P. RTE.	SECTION	COUNTY	TOTAL SHEETS	SHEET NO.
311	(3)BR- 1, 2, & (4)BR	LA SALLE	66	1
FED. ROAD DIST. NO. 7		ILLINOIS	CONTRACT NO. 66741	

P-93-030-99
D-93-013-08



LOCATION OF SECTION INDICATED THUS: —■—

HIGHWAY CLASSIFICATION

ROUTE: FAP ROUTE 311 (IL 71)
FUNCTIONAL CLASS: RURAL OTHER PRINCIPAL ARTERIAL
ADT: 5,700 (2009)

	050-2047	050-2048	050-2049	050-2050
% P.V.	84.1	84.1	84.1	84.1
% S.U.	4.7	4.7	4.7	4.1
% M.U.	11.2	11.2	11.2	11.8

DESIGN SPEED: 55 MPH
POSTED SPEED: 55 MPH

STATE OF ILLINOIS
DEPARTMENT OF TRANSPORTATION
DIVISION OF HIGHWAYS

SUBMITTED 20

George Rayman
DEPUTY DIRECTOR OF HIGHWAYS, REGION ENGINEER
October 2, 2009

Charles J. Ingersoll
ENGINEER OF DESIGN AND ENVIRONMENT
October 2, 2009

Christine M. Reed
DIRECTOR OF HIGHWAYS, CHIEF ENGINEER

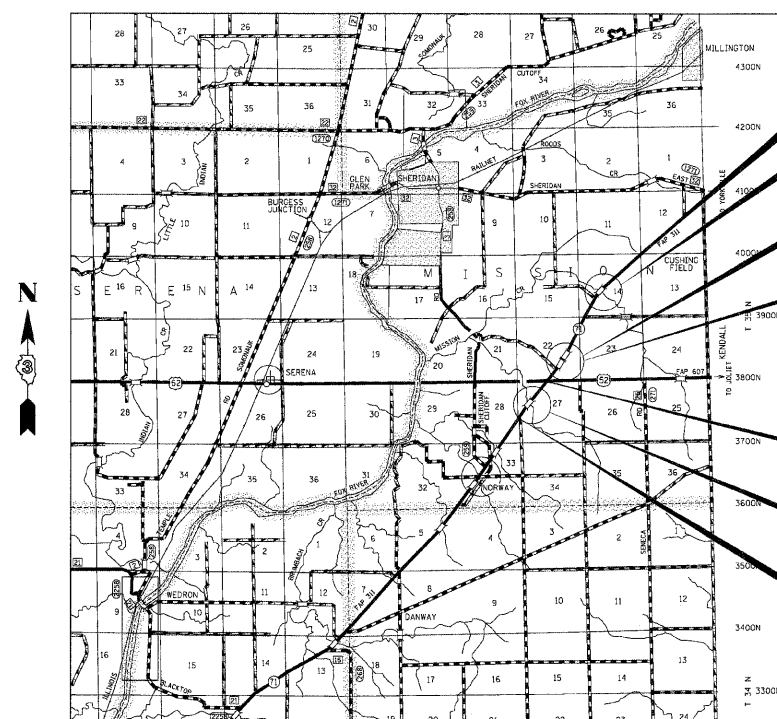
**PRINTED BY THE AUTHORITY
OF THE STATE OF ILLINOIS**

STATE OF ILLINOIS
DEPARTMENT OF TRANSPORTATION
DIVISION OF HIGHWAYS
**PROPOSED
HIGHWAY PLANS**

F.A.P. ROUTE 311 (IL 71)
SECTION (3)BR-1,2,3 & (4)BR
PROJECT ACF-0311(040)
LA SALLE COUNTY

C - 93 - 021 - 08

PROJECT DESCRIPTION
REPLACEMENT OF 4 EXISTING BRIDGES WITH
PRECAST AND CAST-IN-PLACE CONCRETE BOX CULVERTS



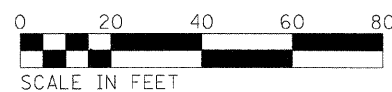
LOCATION MAP
NOT TO SCALE

- END IMPROVEMENT
STA 756+50
- S.N. 050-2047
STA. 754+35.00
3x10'x7' PRECAST BOX CULVERT
- S.N. 050-2048
STA. 683+27.88
2x8'x6' PRECAST BOX CULVERT
- S.N. 050-2049
STA. 680+72.01
2x7'x6' PRECAST BOX CULVERT
- FAP 311 (IL 71)
- S.N. 050-2050
STA. 641+18.00
2x11'x7' PRECAST BOX CULVERT
- BEGIN IMPROVEMENT
STA 638+50

GROSS LENGTH = 11800 FT. = 2.23 MI.
NET LENGTH = 1900 FT. = 0.36 MI.

INDEX OF SHEETS

- 1 COVER SHEET
- 2 HIGHWAY STANDARDS, PLAN NOTES, COMMITMENTS
- 3 SUMMARY OF QUANTITIES
- 4-5 TYPICAL SECTIONS
- 6 SCHEDULE OF QUANTITIES
- 7 ALIGNMENT
- 8 SURVEY TIES AND BENCHMARKS
- 9-14 PLAN AND PROFILE
- 15-20 STAGE CONSTRUCTION TRAFFIC CONTROL
- 21-27 STRUCTURE PLANS - S.N. 050-2047
- 28-34 STRUCTURE PLANS - S.N. 050-2048
- 35-41 STRUCTURE PLANS - S.N. 050-2049
- 42-49 STRUCTURE PLANS - S.N. 050-2050
- 50 SHEET WATERPROOFING MEMBRANE DETAILS
- 51-52 DETAILS
- 53-60 CROSS SECTIONS MAINLINE
- 61-66 EXISTING BRIDGE PLANS



FULL SIZE PLANS HAVE BEEN PREPARED USING STANDARD
ENGINEERING SCALES, REDUCED SIZE PLANS WILL NOT
CONFORM TO STANDARD SCALES, IN MAKING MEASUREMENTS
ON REDUCED PLANS, THE ABOVE SCALES MAY BE USED.

MICROFILMED _____
REEL NUMBER _____
AWARDED _____
RESIDENT ENGINEER _____
AS BUILT CHANGES WERE MADE
ON THE FOLLOWING SHEETS _____

J.U.L.I.E.
JOINT UTILITY LOCATION INFORMATION FOR EXCAVATION
1-800-892-0123
OR 811

DISTRICT 3 NO. (815) 434-6131

PROJECT ENGINEER: JOE KANNEL
UNIT CHIEF: PAT BRABOY

CONTRACT NO. 66741