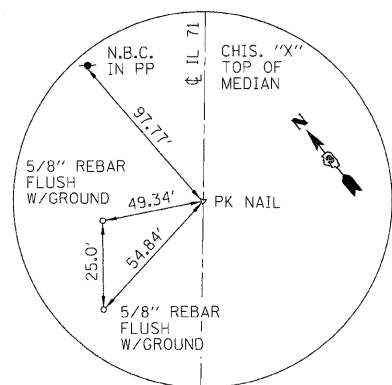
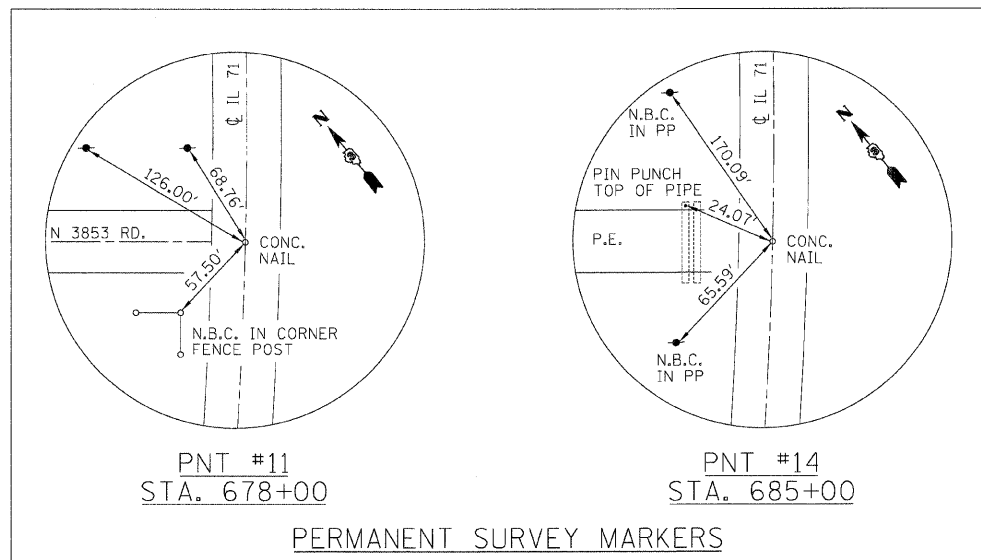


PNT #52
STA. 666+02.11



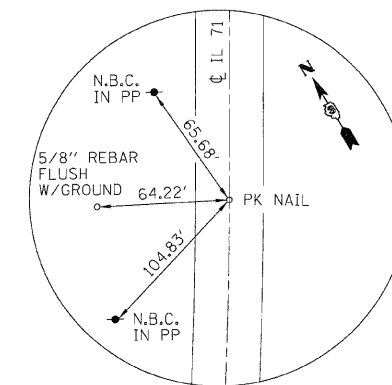
PNT #10
P.O.C. STA. 672+93.97



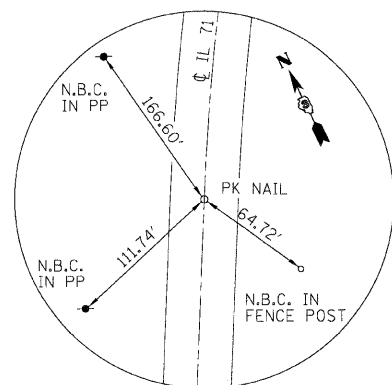
PNT #11
STA. 678+00

PNT #14
STA. 685+00

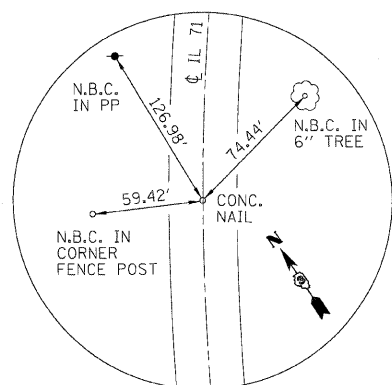
PERMANENT SURVEY MARKERS



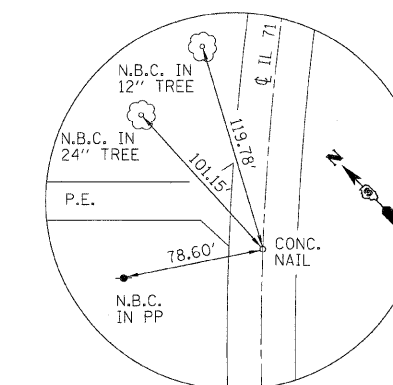
PNT #15
P.T. STA. 694+61.41



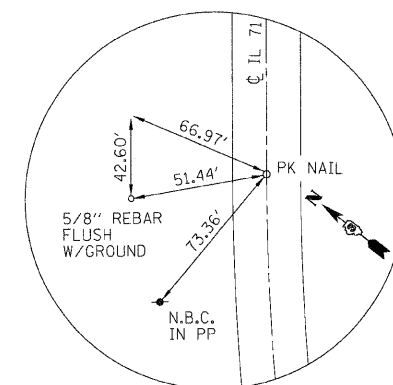
PNT #16
P.C. STA. 741+94.72



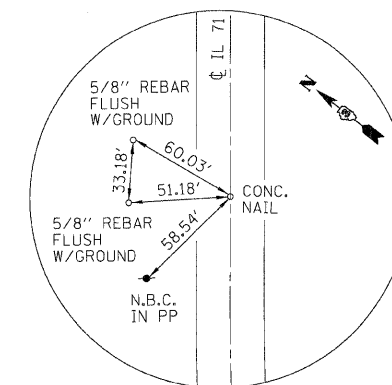
PNT #17
P.O.C. STA. 666+02.11



PNT #19
P.O.C. STA. 759+00



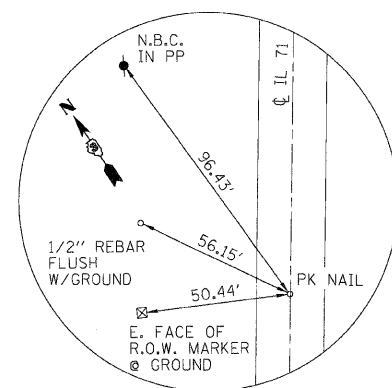
PNT #18
P.T. STA. 764+94.04



PNT #109
STA. 767+38.51

BENCHMARKS

BM #100 BRASS DISC, SW QUAD OF INT OF US 52 AND IL 71
STA 664+13.608, 78.935 LT, ELEV 642.254
BM #11 RAILROAD SPIKE IN P.P.
STA 657+20.20 48.30 LT, ELEV 637.194
BM #13 RAILROAD SPIKE IN P.P.
STA 647+01.20 49.80 LT, ELEV 638.929



PNT #636
STA. 636+77.34

FILE NAME = ...:\C:\v1\0366741-SHT-Ties.dgn	USER NAME = SAW	DESIGNED - RAC	REVISED -
		DRAWN - SAW	REVISED -
	PLOT SCALE = 20.0000' / IN.	CHECKED - RAC	REVISED -
	PLOT DATE = 7/14/2009	DATE - 07/17/09	REVISED -

STATE OF ILLINOIS
DEPARTMENT OF TRANSPORTATION

ILLINOIS ROUTE 71
SURVEY TIES AND BENCHMARKS

SCALE: SHEET NO. OF SHEETS STA. 638+50 TO STA. 756+50

F.A.P. RTE.	SECTION	COUNTY	TOTAL SHEETS	SHEET NO.
311	(3)BR- 1, 2, & (4)BR	LASALLE	66	8
FED. ROAD DIST. NO. ILLINOIS FED. AID PROJECT			CONTRACT NO. 66741	