

STATE OF ILLINOIS
DEPARTMENT OF TRANSPORTATION

ROUTE NO.	SECTION	COUNTY	TOTAL SHEETS	SHEET NO.
F.A.P. 311	*	LaSalle	66	24
FED. ROAD DIST. NO. 7	ILLINOIS	FED. AID PROJECT-		

*(3)BR-1,2,3 & (4)BR Contract #66741

BILL OF MATERIAL

Bar	No.	Size	Length	Shape
a ₁	156	#8	13'-3"	
a ₂	40	#4	11'-5"	
d	70	#4	4'-6"	
h	6	#6	7'-8"	
h ₁	6	#6	5'-11"	
h ₂	30	#6	13'-7"	
h ₃	48	#5	13'-7"	
h ₄	42	#6	5'-11"	
h ₅	42	#6	7'-8"	
h ₆	24	#4	12'-8"	
h ₇	24	#4	10'-8"	
h ₈	8	#6	10'-7"	
h ₉	8	#6	11'-7"	
h ₁₀	8	#6	10'-11"	
v	150	#4	8'-4"	
v ₁	8	#5	11'-3"	
v ₂	32	#4	4'-5"	
v ₃	30	#4	6'-4"	
v ₄ (E)	62	#5	6'-7"	
w	16	#5	15'-6"	
w ₁	16	#5	12'-8"	
x	180	#4	5'-4"	
x ₁	12	#4	9'-8"	
x ₂	24	#4	12'-0"	
x ₃	12	#4	11'-7"	
z	108	#7	8'-4"	
Item			Unit	Quantity
Concrete Box Culverts			Cu. Yd.	91.0
Reinforcement Bars			Pound	13,280
Reinforcement Bars (Epoxy Coated)			Pound	430

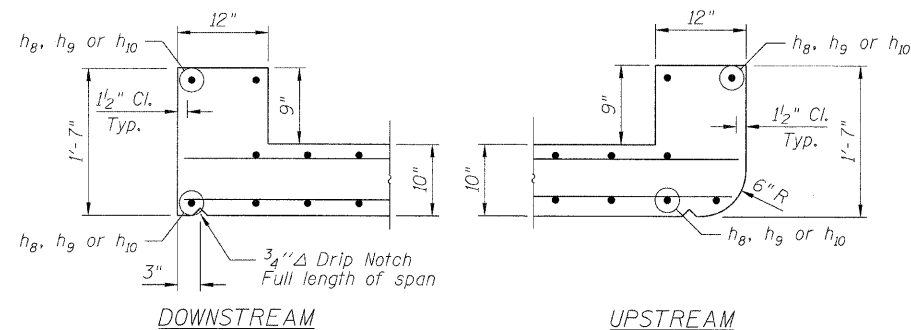
NOTES

Reinforcement Bars shall conform to the requirements of AASHTO M-31, M-42 or M-53, Grade 60.

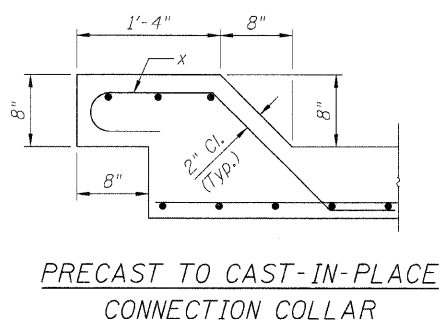
Reinforcement bars designated (E) shall be epoxy coated.

All construction joints shall be bonded.

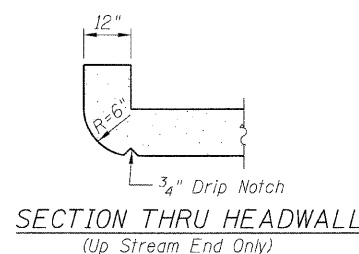
CULVERT DETAILS
IL 71 OVER MISSION CREEK
FAP ROUTE 311
SECTION (3)BR-1,2,3 & (4)BR
LASALLE COUNTY
STA. 754+35
S.N. 050-2047



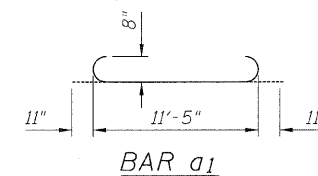
HEADWALL DETAILS



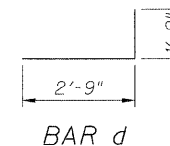
PRECAST TO CAST-IN-PLACE
CONNECTION COLLAR



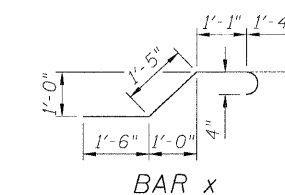
SECTION THRU HEADWALL
(Up Stream End Only)



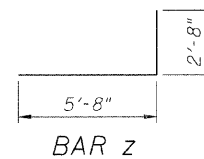
BAR a₁



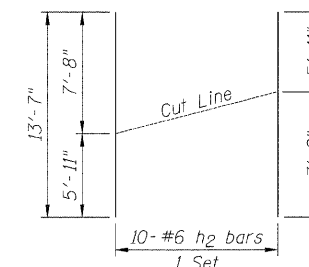
BAR d



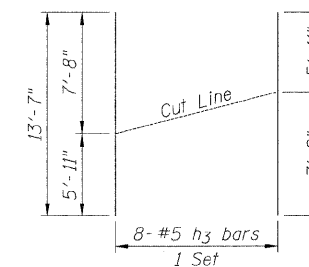
BAR x



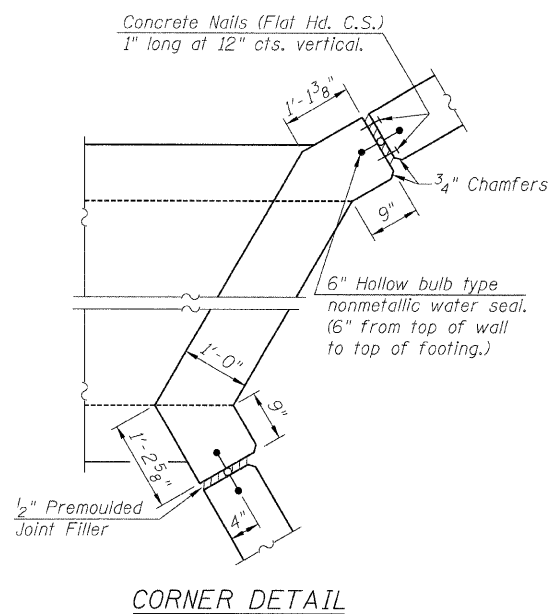
BAR z



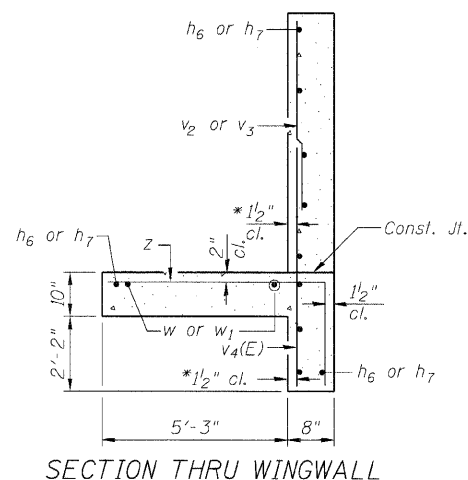
BAR h₂
CUT DIAGRAM



BAR h₃
CUT DIAGRAM

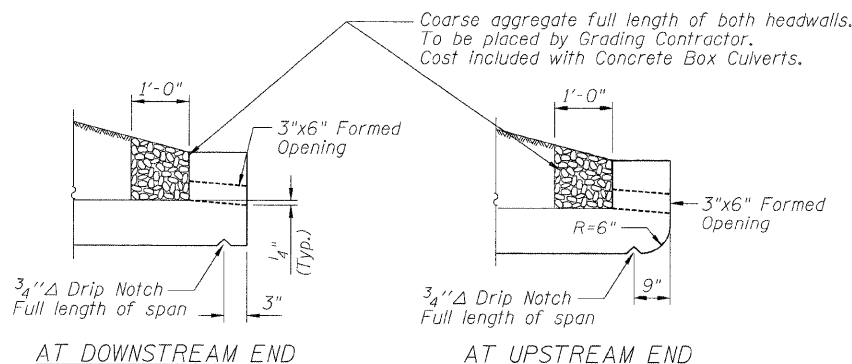


CORNER DETAIL



SECTION THRU WINGWALL

* v bars shall not be placed more than 1/2" cl. from back face of wingwall.



DRAIN DETAIL

DESIGN STRESSES

f_y = 60,000 psi
f'_c = 3,500 psi
Max. Soil Pressure under footing = 3,124 psf

DESIGNED	LAS
CHECKED	JLA
DRAWN	SAW
CHECKED	LAS