

STATE OF ILLINOIS  
DEPARTMENT OF TRANSPORTATION

ROUTE NO.	SECTION	COUNTY	TOTAL SHEETS	SHEET NO.	SHEET NO. 4 8 SHEETS
F.A.P. 311	*	LaSalle	66	45	
FED. ROAD DIST. NO. 7	ILLINOIS	FED. AID PROJECT			

\*(3)BR-1,2,3 & (4)BR Contract #66741

BILL OF MATERIAL

Bar	No.	Size	Length	Shape
a41	112	#8	13'-8"	U
a42	20	#4	11'-10"	—
a43	4	#4	13'-2"	—
d40	50	#4	4'-6"	L
h40	4	#6	9'-0"	—
h41	4	#6	6'-0"	—
h42	24	#6	15'-0"	—
h43	40	#5	15'-0"	—
h44	28	#6	6'-0"	—
h45	28	#6	9'-0"	—
h46	22	#4	13'-8"	—
h47	22	#4	10'-5"	—
h48	8	#6	12'-7"	—
h49	8	#6	12'-2"	—
v40	100	#4	8'-6"	—
v41	8	#4	11'-4"	—
v42	50	#4	5'-10"	—
v43(E)	54	#4	7'-6"	—
w40	16	#5	17'-9"	—
w41	16	#5	14'-6"	—
x40	152	#4	5'-4"	S
x41	12	#4	9'-10"	—
x42	24	#4	13'-3"	—
z40	114	#7	8'-4"	L

Item	Unit	Quantity
Concrete Box Culverts	Cu. Yd.	80.4
Reinforcement Bars	Pound	11,100
Reinforcement Bars (Epoxy Coated)	Pound	270

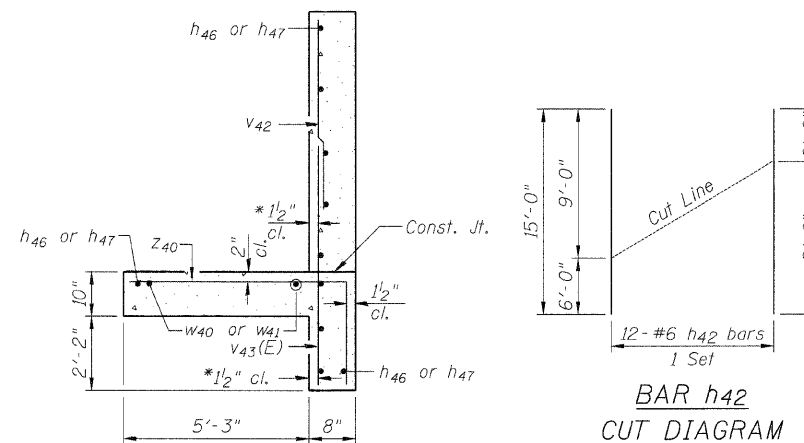
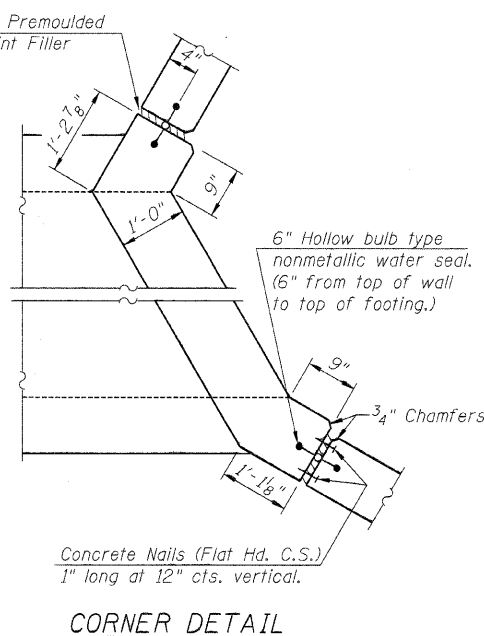
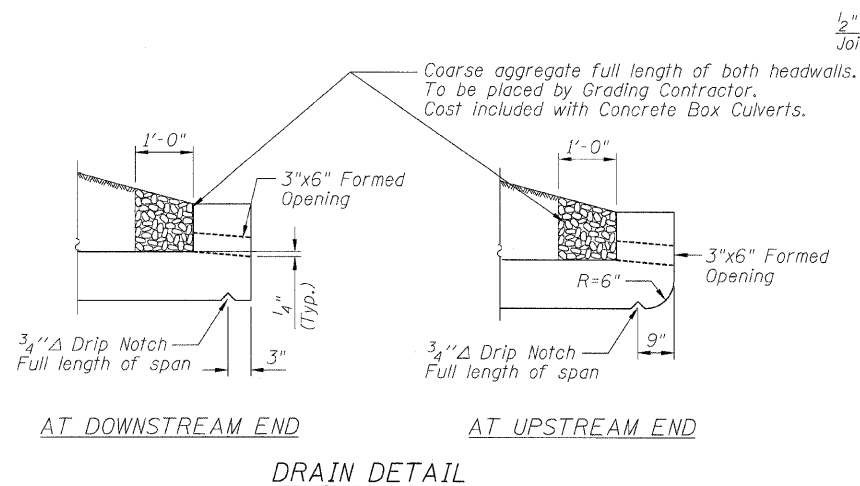
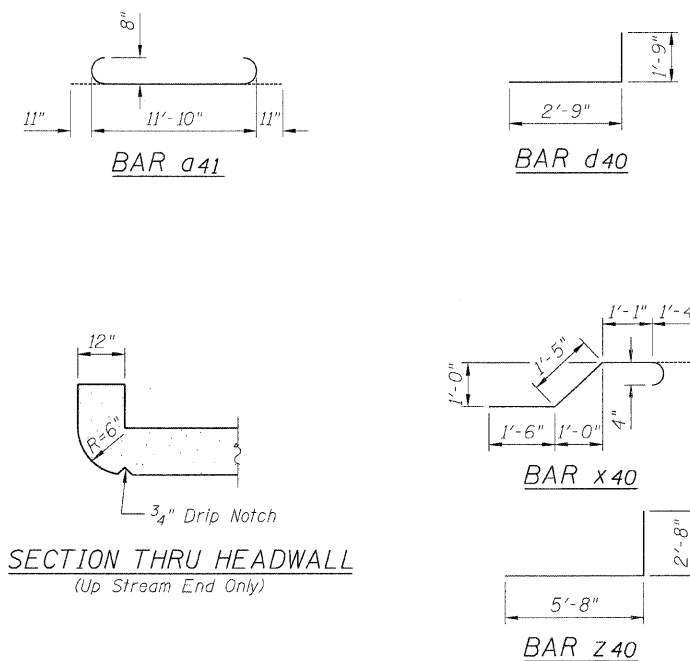
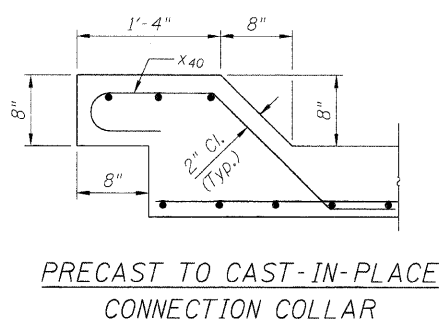
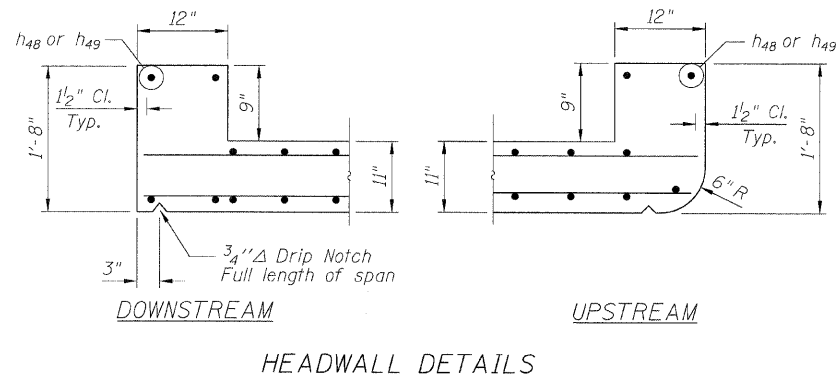
NOTES

Reinforcement Bars shall conform to the requirements of AASHTO M-31, M-42 or M-53, Grade 60.

Reinforcement bars designated (E) shall be epoxy coated.

All construction joints shall be bonded.

CULVERT DETAILS  
IL 71 OVER MISSION CREEK  
FAP ROUTE 311  
SECTION (3)BR-1,2,3 & (4)BR  
LASALLE COUNTY  
STA. 641+18.00  
S.N. 050-2050

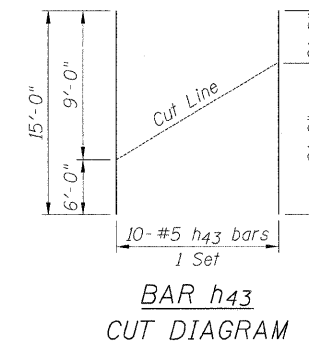


\* v bars shall not be placed more than 1 1/2" cl. from back face of wingwall.

DESIGN STRESSES

$f_y = 60,000$  psi  
 $f'_c = 3,500$  psi

Max. Soil Pressure under footing = 3,124 psf



DESIGNED	LAS
CHECKED	JLA
DRAWN	SAW
CHECKED	LAS