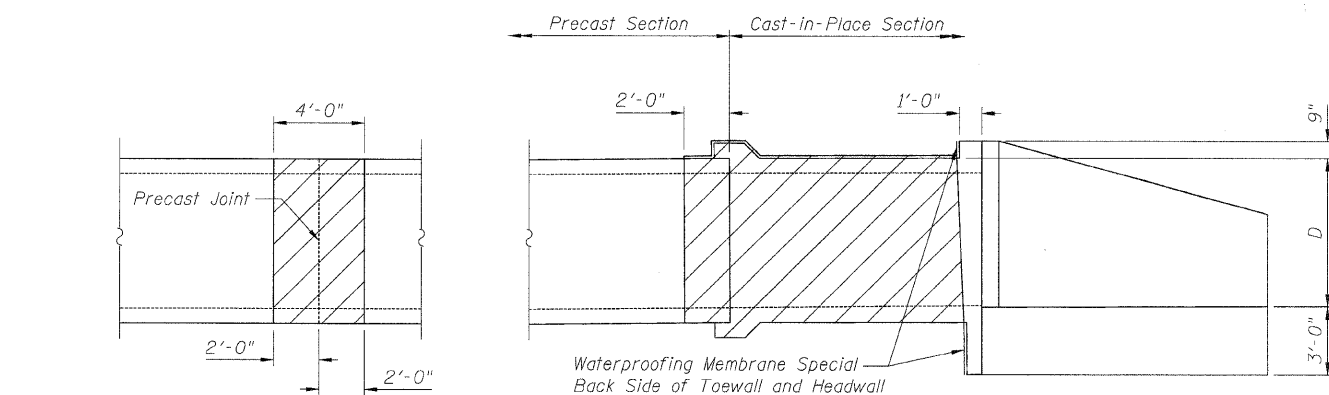


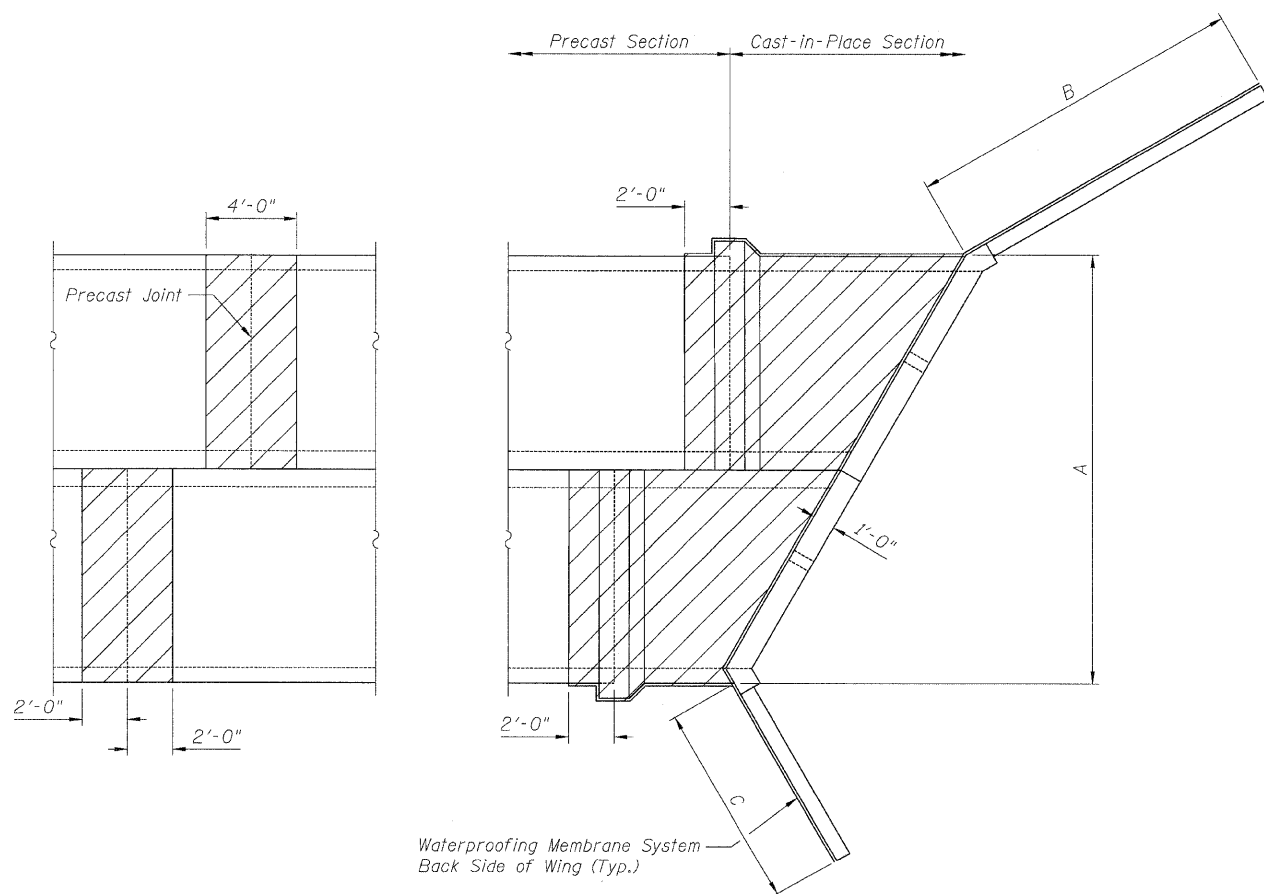
STATE OF ILLINOIS  
DEPARTMENT OF TRANSPORTATION

ROUTE NO.	SECTION	COUNTY	TOTAL SHEETS	SHEET
F.A.P. 311	*	LaSalle	66	50
FED. ROAD DIST. NO. 7	ILLINOIS	FED. AID PROJECT		

\*(3)BR-1,2,3 & (4)BR Contract #66741



ELEVATION



TOP PLAN

DESIGNED	LAS
CHECKED	JLA
DRAWN	SAW
CHECKED	LAS

NOTES

The exposed surfaces as indicated shall be protected by the Waterproofing Membrane as per the manufacturer's recommendations.

A manufacturer's representative shall be on site during the installation of the Waterproofing Membrane to provide technical support when required. All cost incurred due to the on-site representative shall not be paid for separately but shall be included in the unit cost of the Waterproofing Membrane work.

The Contractor shall install the Waterproofing Membrane according to the Manufacturer's recommendations, plan details and as directed by the Engineer.

TABLE OF DIMENSIONS

Structure No.	A	B	C	D
050-2047	35'-6"	14'-1 <sup>3</sup> / <sub>8</sub> "	12'-2 <sup>5</sup> / <sub>8</sub> "	7'-10"
050-2048	18'-11"	15'-0 <sup>1</sup> / <sub>4</sub> "	9'-9 <sup>7</sup> / <sub>8</sub> "	6'-8"
050-2049	16'-11"	9'-9 <sup>7</sup> / <sub>8</sub> "	15'-0 <sup>1</sup> / <sub>4</sub> "	6'-8"
050-2050	25'-11"	11'-11 <sup>7</sup> / <sub>8</sub> "	15'-1 <sup>1</sup> / <sub>8</sub> "	7'-11"

BILL OF MATERIAL

ITEM	UNIT	TOTAL
Sheet Waterproofing Membrane System	Sq. Yd.	2,136

SHEET WATERPROOFING MEMBRANE DETAILS

IL 71 OVER MISSION CREEK

FAP ROUTE 311

SECTION (3)BR-1,2,3 & (4)BR

LASALLE COUNTY

STA. 638+50 TO STA. 756+50

S.N. 050-2047, 050-2048, 050-2049 & 050-2050