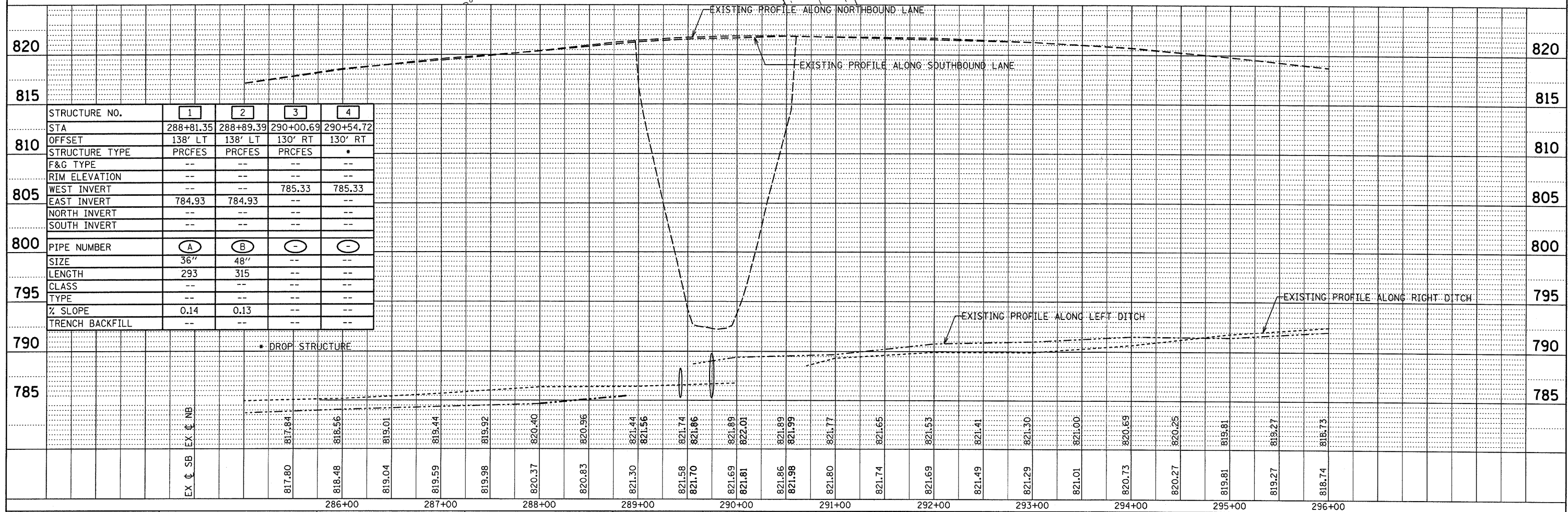
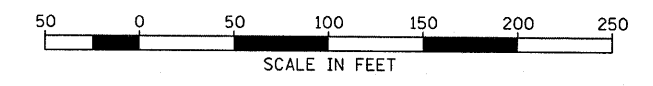


- NOTES:
- PIERS SHALL BE REMOVED TO A DEPTH OF 10' BELOW THE BOTTOM OF THE GIRDER
 - ABUTMENTS SHALL BE COMPLETELY REMOVED



STRUCTURE NO.	1	2	3	4
STA	288+81.35	288+89.39	290+00.69	290+54.72
OFFSET	138' LT	138' LT	130' RT	130' RT
STRUCTURE TYPE	PRCFES	PRCFES	PRCFES	*
F&G TYPE	--	--	--	--
RIM ELEVATION	--	--	--	--
WEST INVERT	--	--	785.33	785.33
EAST INVERT	784.93	784.93	--	--
NORTH INVERT	--	--	--	--
SOUTH INVERT	--	--	--	--
PIPE NUMBER	A	B	-	-
SIZE	36"	48"	--	--
LENGTH	293	315	--	--
CLASS	--	--	--	--
TYPE	--	--	--	--
% SLOPE	0.14	0.13	--	--
TRENCH BACKFILL	--	--	--	--

DATE	08/08
BY	CHAMIN
DATE	08/08
BY	CHAMIN
DATE	08/08
BY	CHAMIN
DATE	08/08
BY	CHAMIN
DATE	08/08
BY	CHAMIN

DATE	08/08
BY	CHAMIN
DATE	08/08
BY	CHAMIN
DATE	08/08
BY	CHAMIN
DATE	08/08
BY	CHAMIN
DATE	08/08
BY	CHAMIN