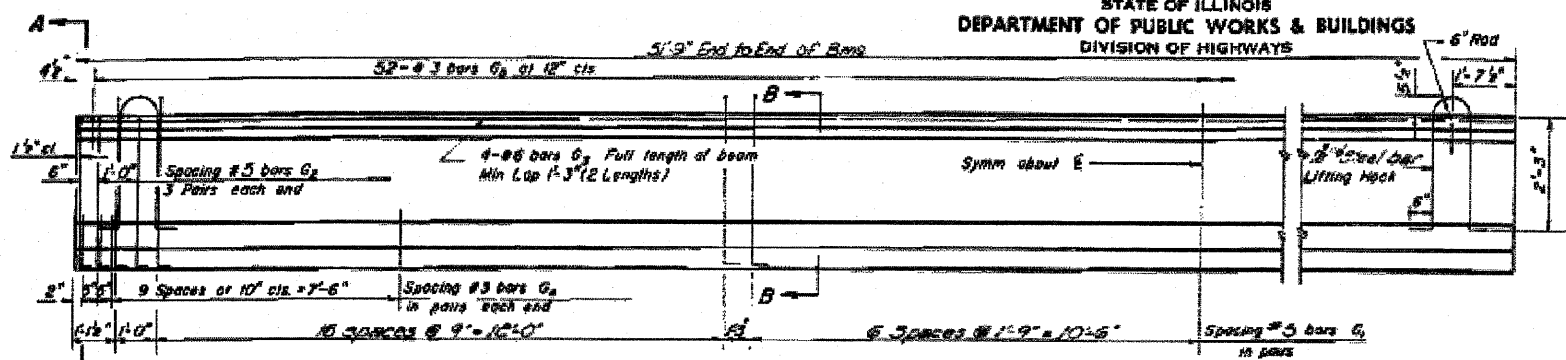
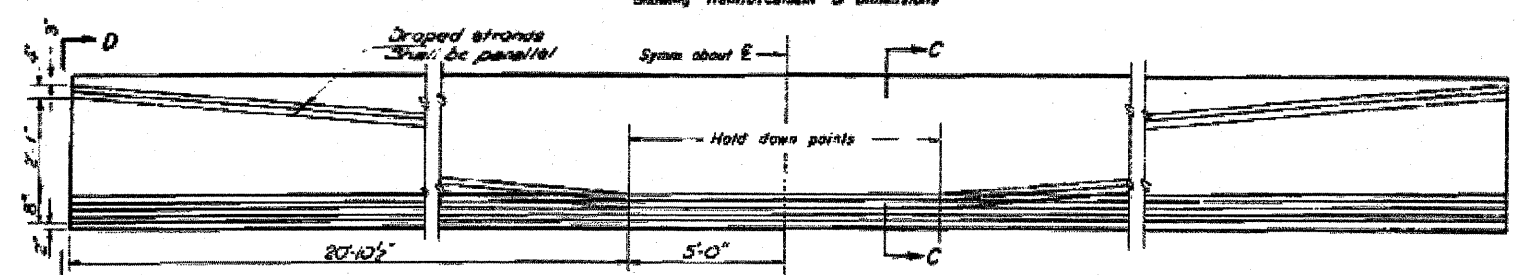


STATE OF ILLINOIS
DEPARTMENT OF PUBLIC WORKS & BUILDINGS
DIVISION OF HIGHWAYS

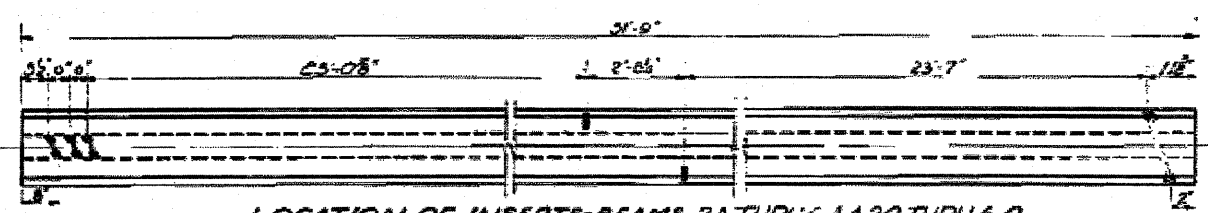
DATE	BY	CHECKED	SCALE	SHEET NO.
11-27-57	JWB	JWB	1/8" = 1'-0"	3



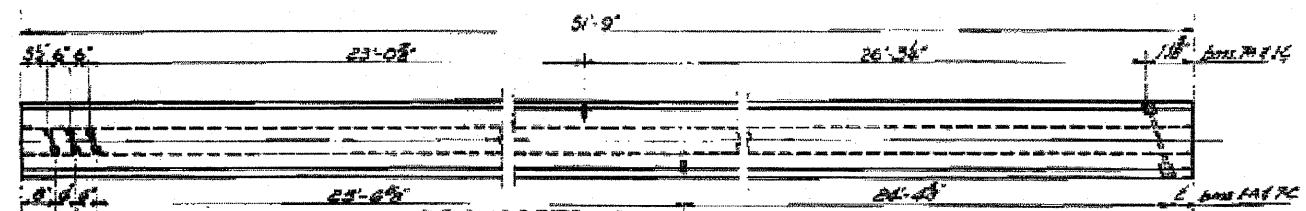
ELEVATION OF BEAMS - SPANS 163
Showing Reinforcement & Dimensions



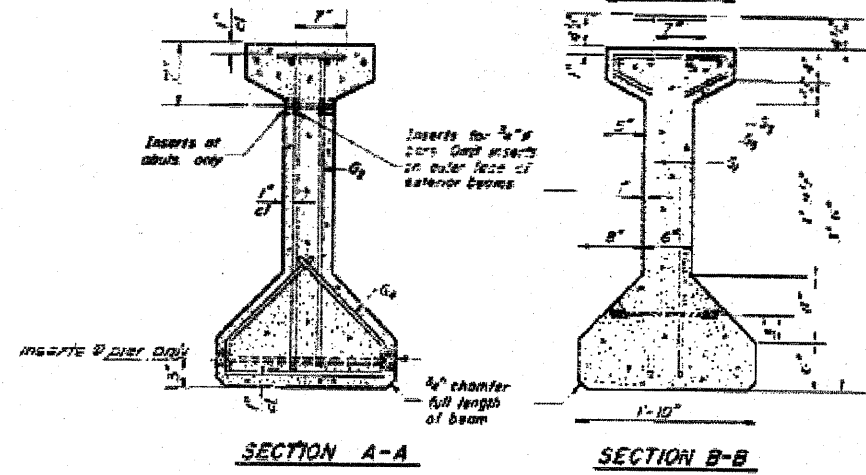
ELEVATION OF BEAMS - SPANS 143
Showing Prestressing Steel



LOCATION OF INSERTS - BEAMS 2A THRU 6A & 2C THRU 6C

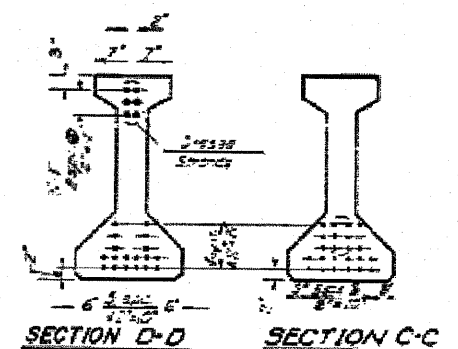


LOCATION OF INSERTS - BEAMS 1A, 7A, 1C, 7C



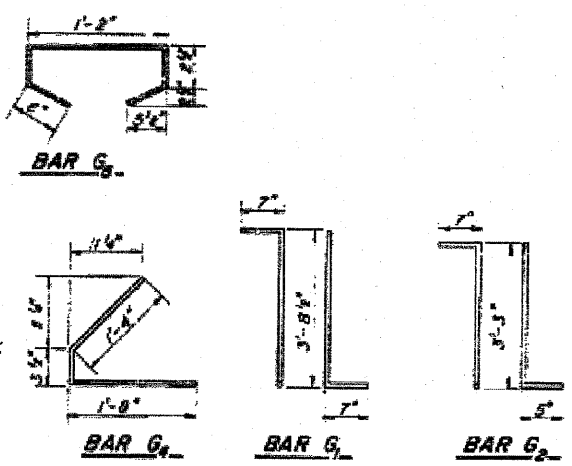
SECTION A-A

SECTION B-B



SECTION D-D

SECTION C-C



BAR SCHEDULE

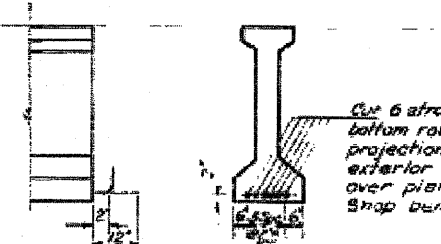
ID	Qty	Size	Length	Notes
G1	272	#5	4'-0"	TL
G2	336	#5	4'-5"	TL
G3	228	#5	2'-5"	TL
G4	132	#3	2'-3"	L
G5	122	#3	2'-7"	TL

BILL OF MATERIAL

Item	UNIT	Qty
FURNISHING & Erecting Precast Prestressed Concrete I-Beams, 42"	Lin Ft	1442

NOTES

All inserts and threaded rods for inserts, reinforcing and Prestressing Steel, and other items which are cast into the Precast Concrete I-Beams shall be included in the contract unit price per linear foot of "Furnishing And Erecting Precast Prestressed Concrete I-Beams, 42 In. See Supplemental Specs for additional information regarding materials, Prestressing equipment, construction and handling methods and other requirements for Precast Prestressed Concrete I-Beams. Prestressing Steel shall have a nominal diameter of 1/8". Inserts for 3/4" threaded rods are to be two strut, coil type for interior I-Beams and single coil, flared loop type for exterior I-Beams. Steel for lifting hooks shall be non-deformed bars of structural or intermediate grade bitter steel. Ends of beams to be encased with cast in place concrete shall not be coated with asphalt paint.



DETAIL AT END OF EXTERIOR BEAMS OVER PIERS

DESIGNED <i>Robert J. Smith</i>	DATE <i>May 5, 1965</i>
CHECKED <i>[Signature]</i>	APPROVED <i>[Signature]</i>
REVISIONS	

PI-1-42 S 8-1-63

BEAM DETAILS SPANS 163
EA, RT 57 SEC. 27-1WB
FORD COUNTY
STA. 289+70.58