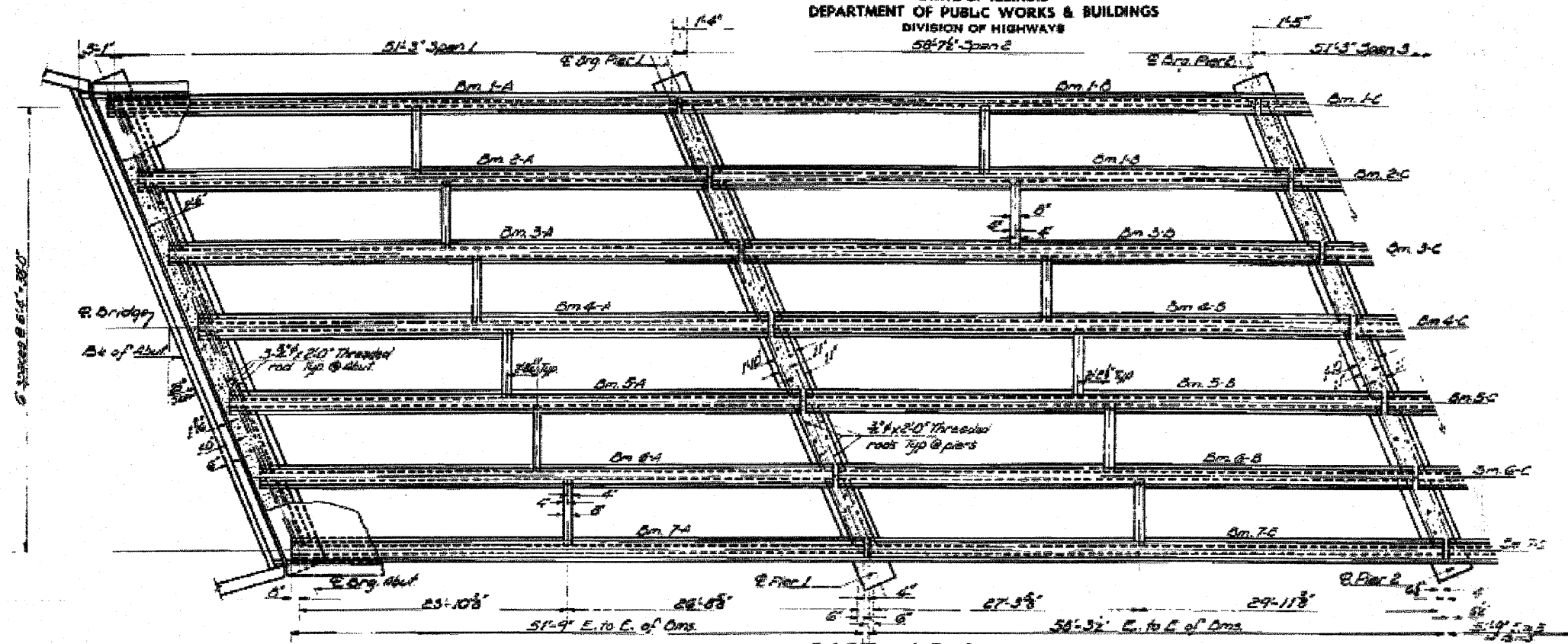


STATE OF ILLINOIS
DEPARTMENT OF PUBLIC WORKS & BUILDINGS
DIVISION OF HIGHWAYS

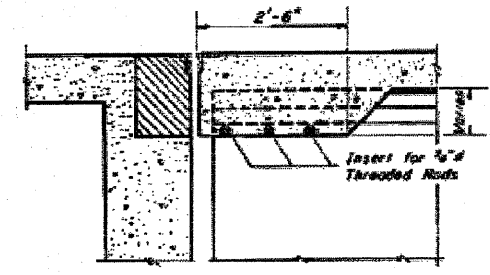
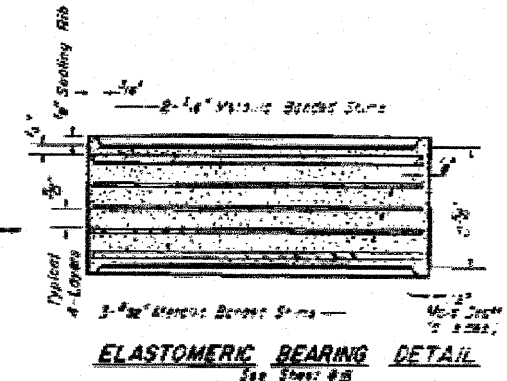
| | | | |
|-------------|------|--------|---------|
| PROJECT NO. | ROAD | 150 29 | 16-1073 |
| DATE | | | |
| BY | | | |



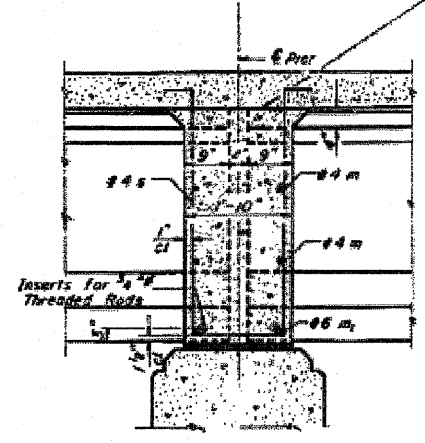
Note: For location of inserts See Shd. #34-44

PART OF PLAN

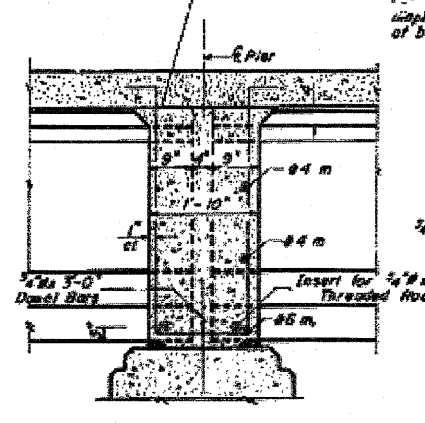
Note: Concrete in slab above the pier shall be placed not less than 45 minutes not more than 90 minutes after diaphragm has been poured. Pour diaphragm flush with top of beam.



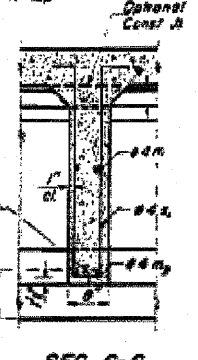
SECTION AT ABUTMENT



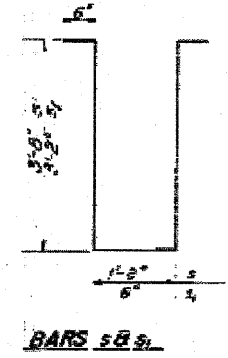
PIER 2



PIER 1



SEC. C-C
(See Shd. #4)



BARS 5/8"

Note: Bars m, n, m₁, s & s₁ are shown in Bill of Material Sheet # 2.

| | |
|--------------------------------|-----------------------------|
| DESIGNED <i>Robert J. Cook</i> | DATE <u>May 5 1965</u> |
| CHECKED <i>[Signature]</i> | EXAMINED <i>[Signature]</i> |
| DRAWN <i>Thomas B. Fuller</i> | PASSED |
| CHECKED <i>[Signature]</i> | APPROVED |

PI-2-C 8-1-63

FRAMING PLAN
CAL. RT. 57 SEC. 27-JVB
FORD COUNTY
STA. 289+70.58