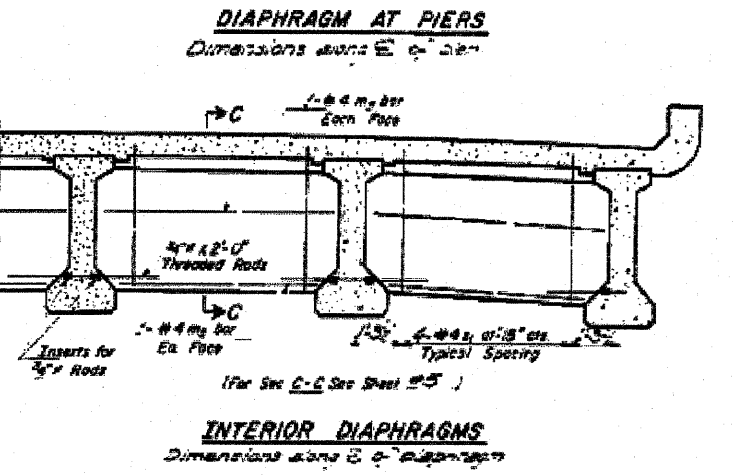
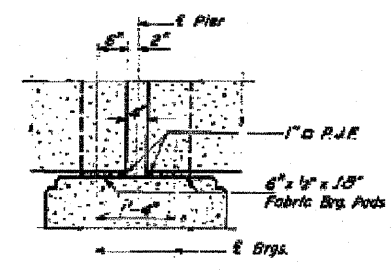
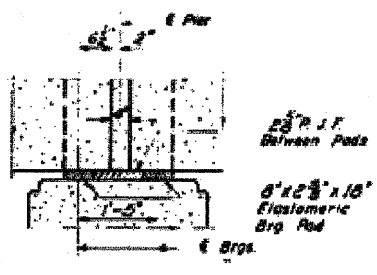
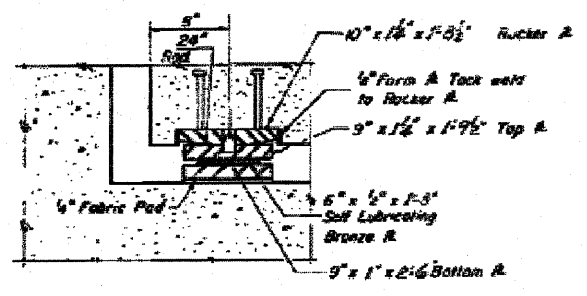
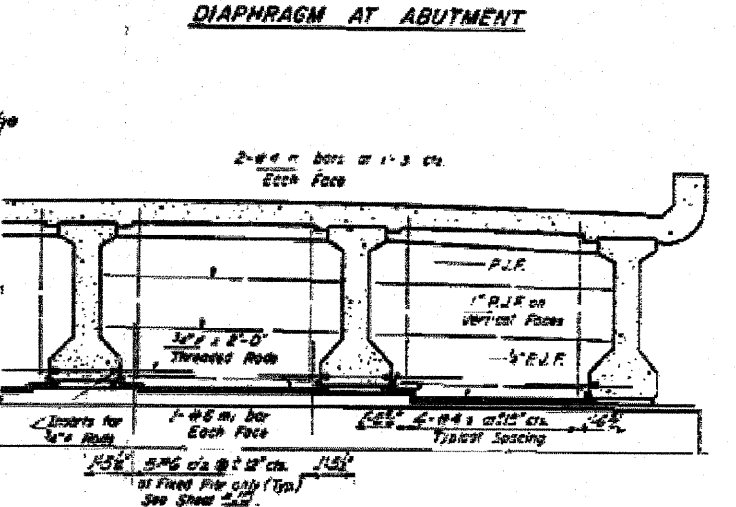
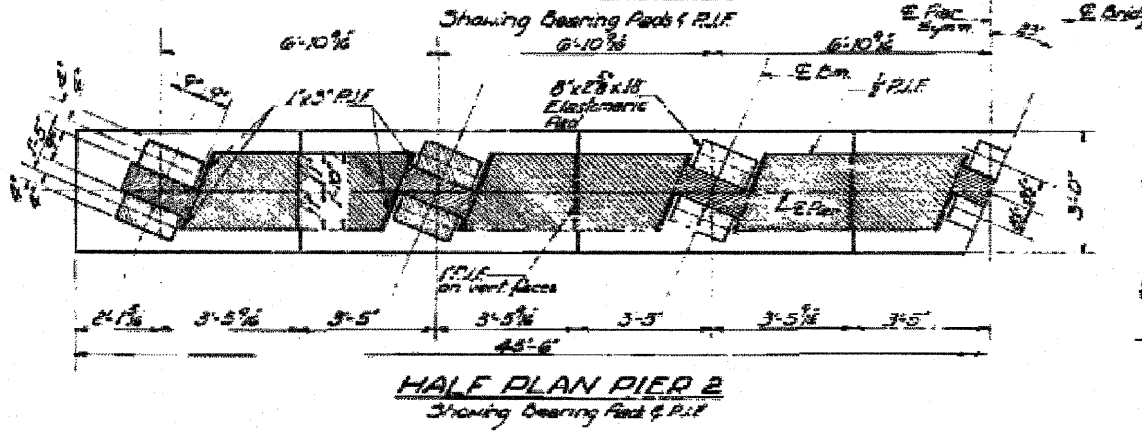
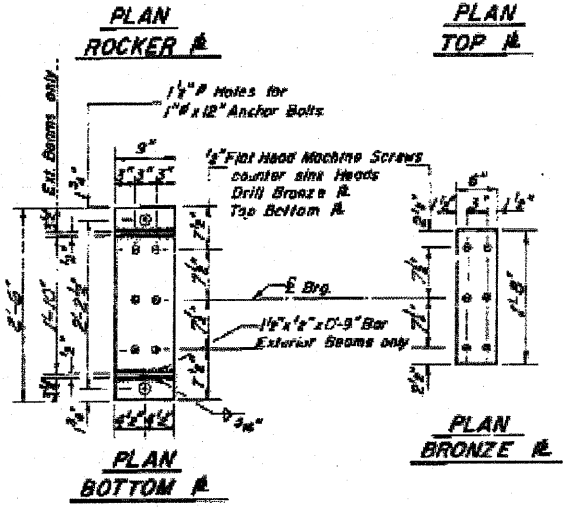
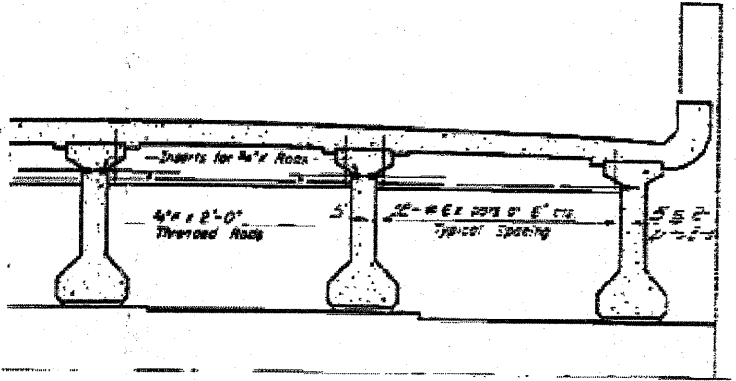
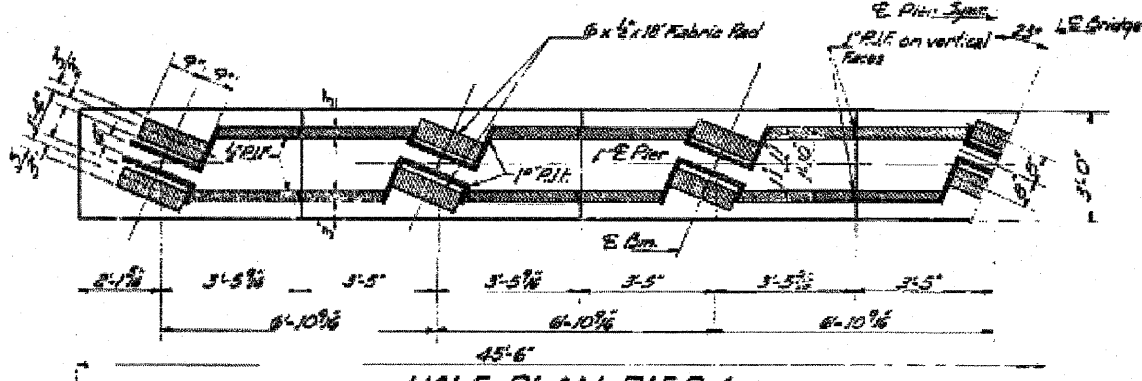
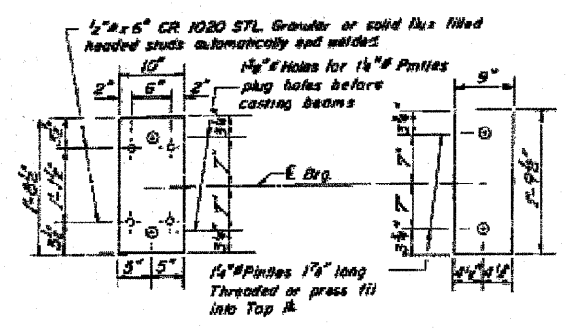
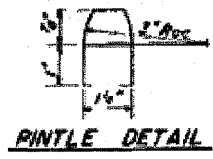
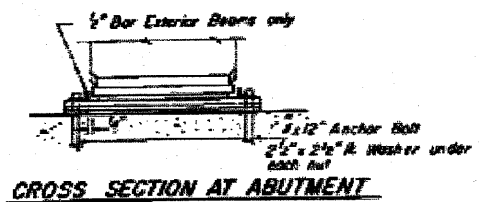


STATE OF ILLINOIS
DEPARTMENT OF PUBLIC WORKS & BUILDINGS
DIVISION OF HIGHWAYS

DATE	BY	CHKD	APP'D	SHEET NO. 6
11-27-63	FORD	JCB	CC	16 SHEETS



DESIGNED <i>Baboy Jarch</i>	DATE <i>May 5 1965</i>
CHECKED <i>[Signature]</i>	APPROVED <i>[Signature]</i>
DRAWN <i>[Signature]</i>	DATE
CHECKED <i>[Signature]</i>	DATE

Note:
Elastic Bearing Pads shall be grade 50.
Cost of Elastic and Fabric Bearing Pads shall be incidental to "Furnishing and Erecting Precast Prestressed Concrete I-Beams." See Special Provisions.
Cost of Rocker A - cast 1/2 inch beam is included in the cost of "Furnishing and Erecting Precast Prestressed Concrete I-Beams."

BEARINGS & DIAPHRAGMS
EAL RT. 57 SEC. 27-1VB
FORD COUNTY
STA. 289+70.58