

STATE OF ILLINOIS
DEPARTMENT OF PUBLIC WORKS & BUILDINGS
DIVISION OF HIGHWAYS

PROJECT NO.	DATE	SCALE	SHEET NO.
1-277 (7/11)	FORD	1/8" = 1'-0"	18

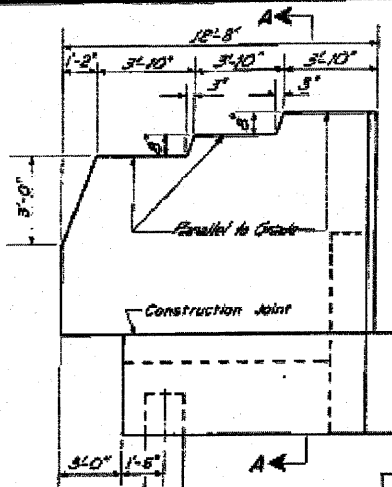
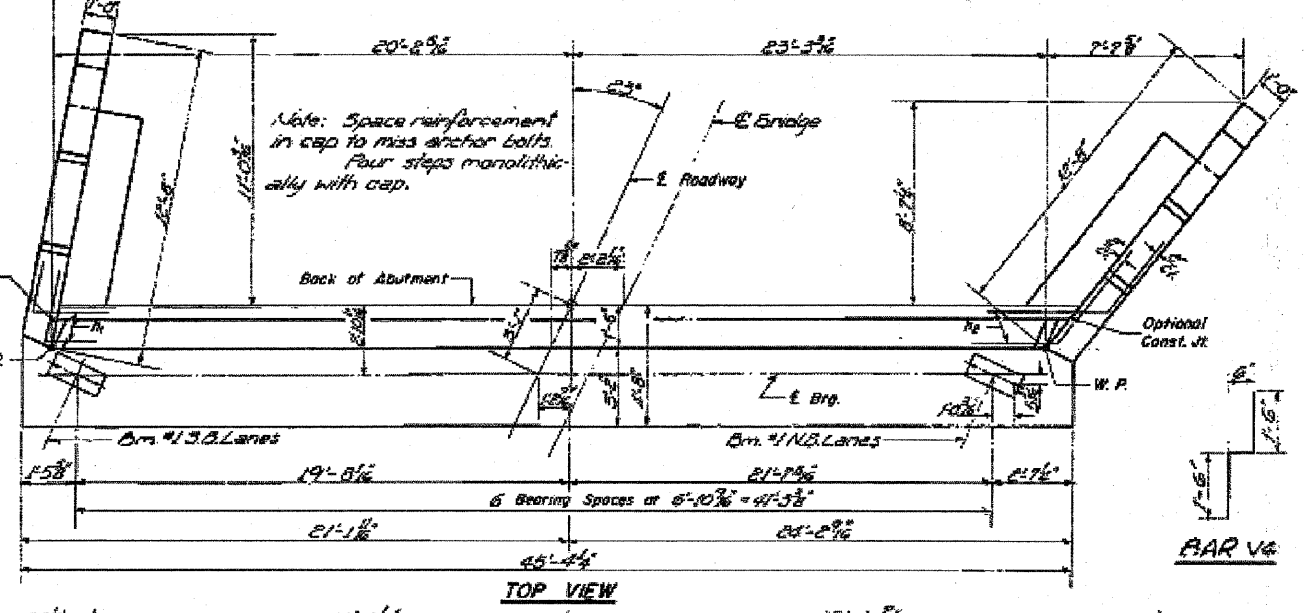
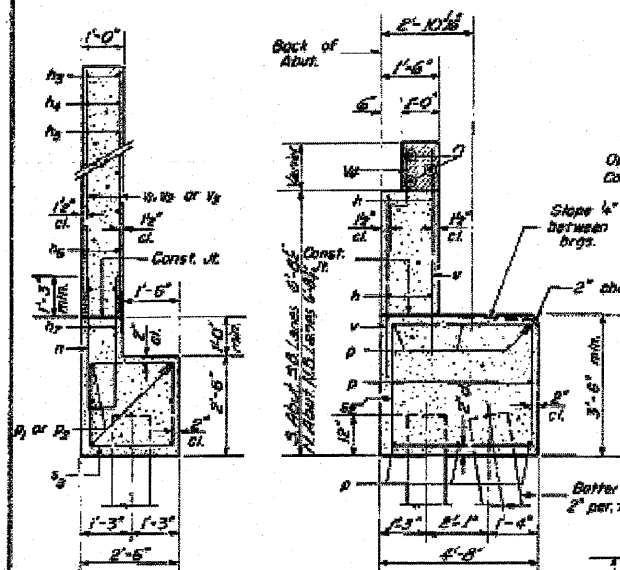
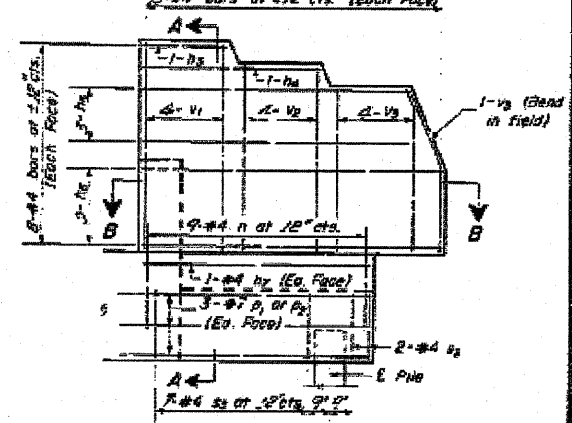
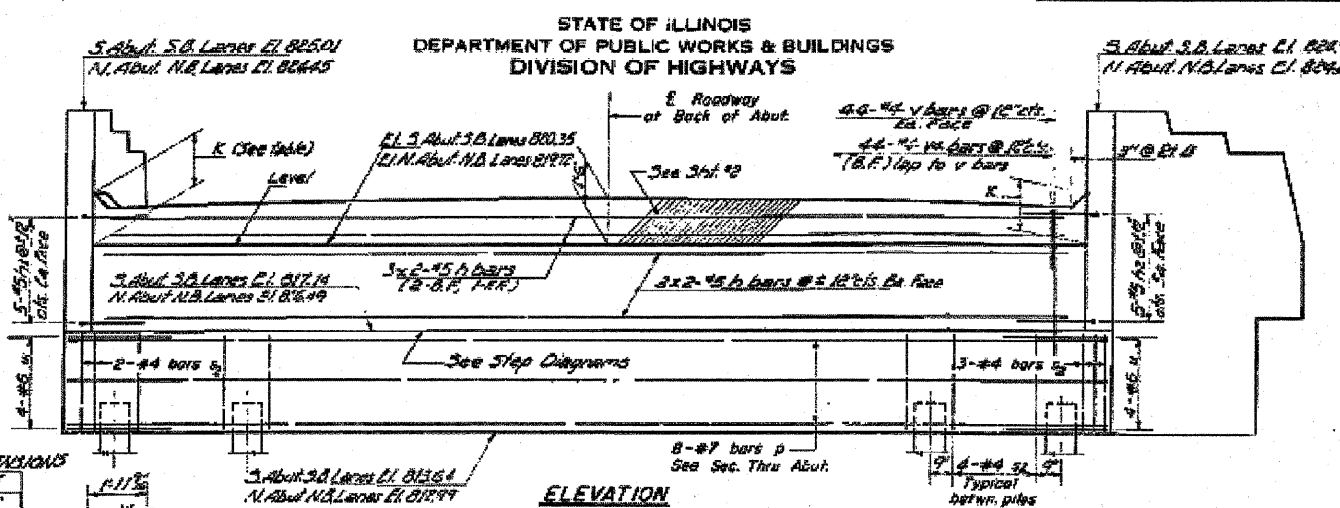


TABLE OF "K" DIMENSIONS

N. Abut.	E.	1'-0"
N. Lanes	N.	1'-6"
S. Abut.	E.	1'-5"
S. Lanes	N.	1'-5"



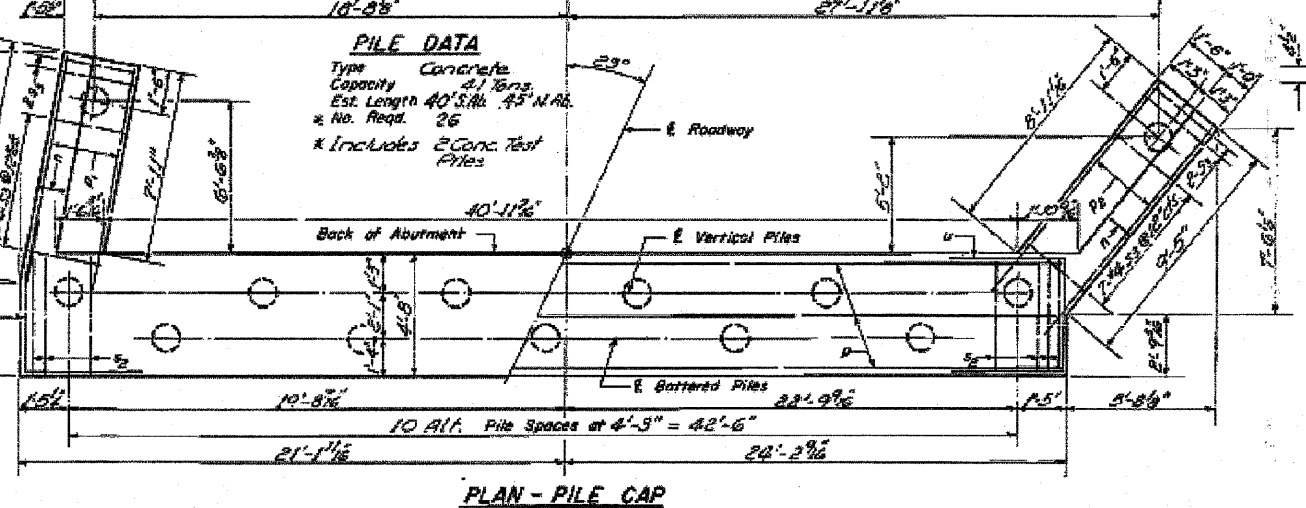
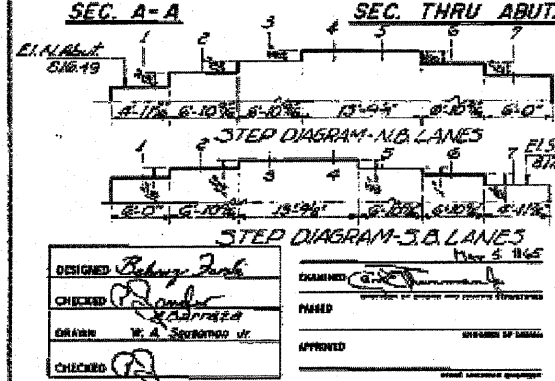
SEC. B-B
2 ABUTMENTS
BILL OF MATERIAL

Bar	No.	Size	Length	Shape
n	36	#5	22'-3"	L
m	30	#5	5'-0"	L
l	20	#5	5'-6"	L
k	5	#4	3'-5"	L
j	8	#4	7'-3"	L
i	22	#4	17'-3"	L
h	24	#4	18'-5"	L
g	8	#4	9'-5"	L

Bar	No.	Size	Length	Shape
v	176	#4	5'-9"	L
u	32	#4	7'-6"	L
w	32	#4	6'-8"	L
x	40	#4	6'-0"	L
y	63	#4	5'-8"	L

Class X Concrete	Cu. Yds.	93.4
Reinforcement Bars	Lbs.	6,330
Concrete Piles	Lb. Ft.	1,020
Test Piles (Conc.)	Eq.	2

S. ABUT-S. BOUND LANES
N. ABUT-N. BOUND LANES
FA. L. RTE. 57 SEC. 27 1/2
FORD COUNTY
STA. 289+70.58



PILE DATA

Type	Concrete
Capacity	21 Tons
Est. Length	40' S. Abut. 45' N. Abut.
No. Req'd.	26

* Includes 2 Conc. Test Piles

A-B-R (15°-35°) 7-19-62 Rev. 11-27-62
Rev. N.H. 1-28-68