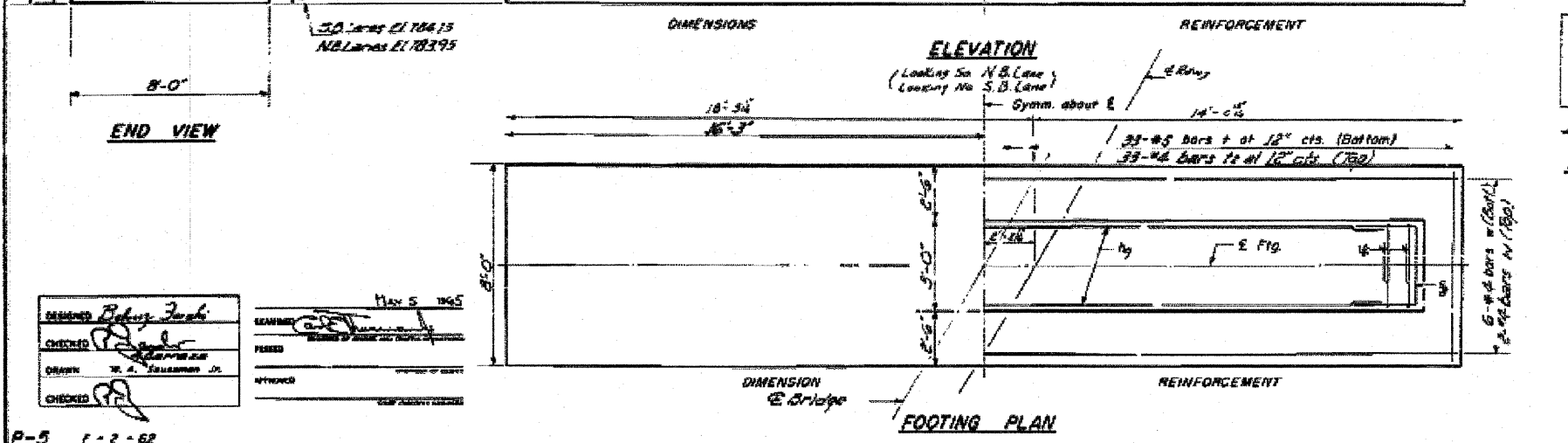
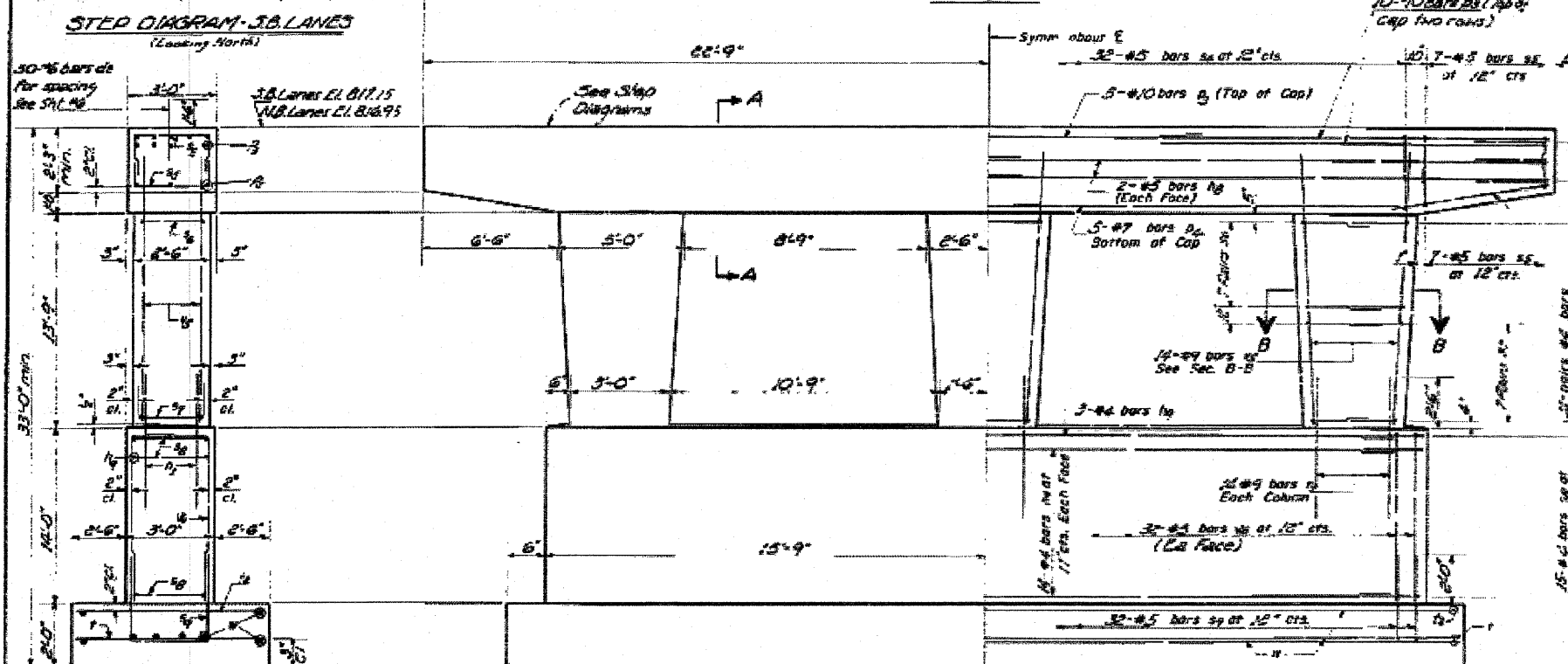
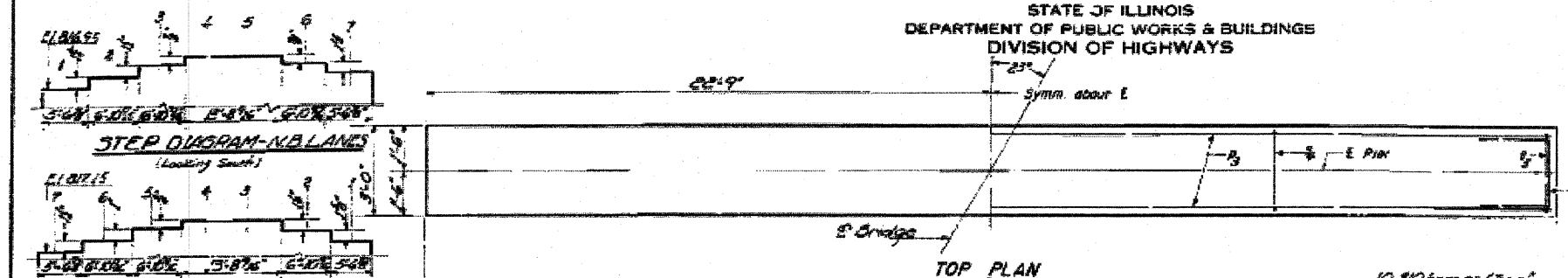
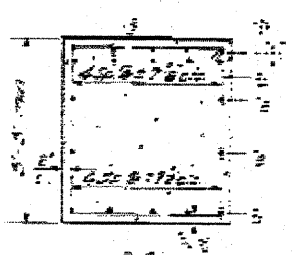


STATE OF ILLINOIS
DEPARTMENT OF PUBLIC WORKS & BUILDINGS
DIVISION OF HIGHWAYS

DATE: 12-1-62
PROJECT: I-57 SEC. 27 NB
SHEET NO. 20



NOTE:
Space reinforcement is cast to
max anchor bolts.
Pour steps main - copy with cap.



SECTION B-B

BAR V6
2 PIERS
BILL OF MATERIAL

80	10	5/8	10.0	5.00
81	16	3/4	21.5	10.50
82	22	1/2	10.0	5.00
83	22	3/4	21.5	10.50
84	22	1/2	10.0	5.00
85	22	3/4	21.5	10.50
86	22	1/2	10.0	5.00
87	22	3/4	21.5	10.50
88	22	1/2	10.0	5.00
89	22	3/4	21.5	10.50
90	22	1/2	10.0	5.00
91	22	3/4	21.5	10.50
92	22	1/2	10.0	5.00
93	22	3/4	21.5	10.50
94	22	1/2	10.0	5.00
95	22	3/4	21.5	10.50
96	22	1/2	10.0	5.00
97	22	3/4	21.5	10.50
98	22	1/2	10.0	5.00
99	22	3/4	21.5	10.50
100	22	1/2	10.0	5.00

BARS IN THRU LUGS
A & B DIMENSIONS

80	10	5/8	10.0
81	16	3/4	21.5
82	22	1/2	10.0
83	22	3/4	21.5
84	22	1/2	10.0
85	22	3/4	21.5
86	22	1/2	10.0
87	22	3/4	21.5
88	22	1/2	10.0
89	22	3/4	21.5
90	22	1/2	10.0
91	22	3/4	21.5
92	22	1/2	10.0
93	22	3/4	21.5
94	22	1/2	10.0
95	22	3/4	21.5
96	22	1/2	10.0
97	22	3/4	21.5
98	22	1/2	10.0
99	22	3/4	21.5
100	22	1/2	10.0

PIERS 1
FA.I. RTE. 57 SEC. 27 NB
FORD COUNTY
3TA 289+70.56

DESIGNED: Robert J. ...
CHECKED: ...
DATE: May 5, 1965

P-5 1-2-62
REV. N.H. 1-28-62