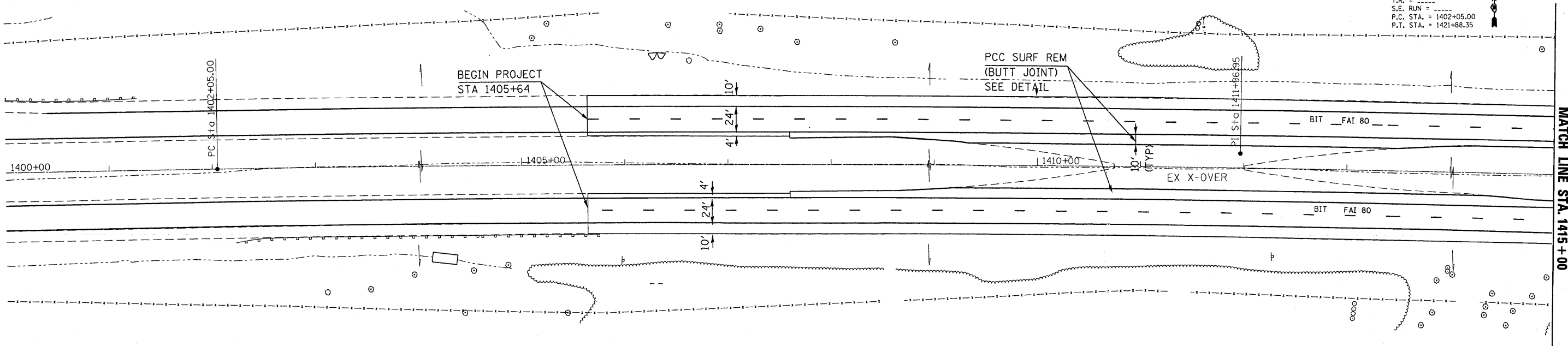
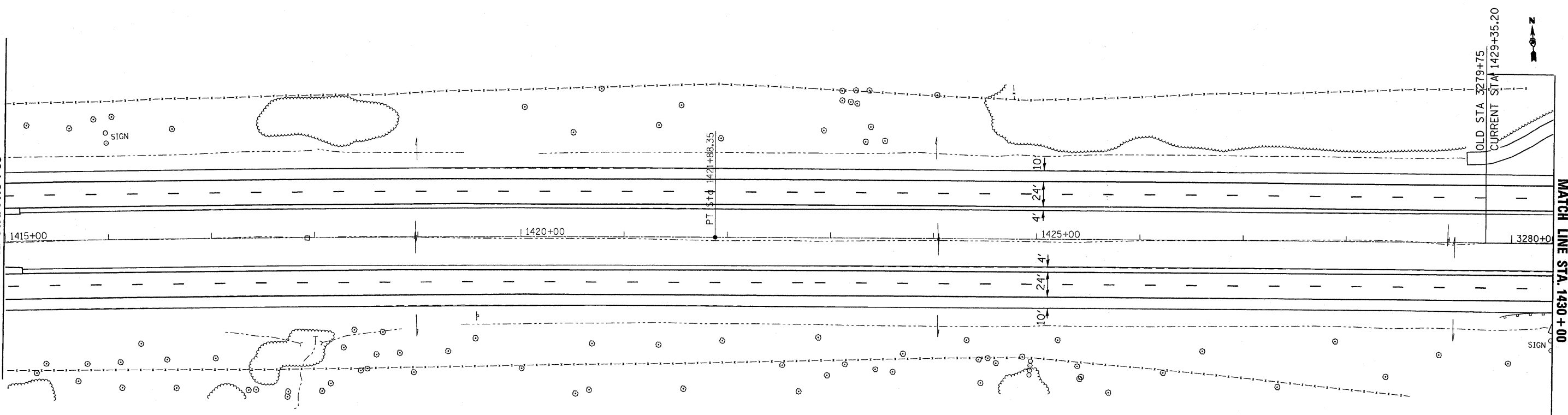


EXIST. CURVE 1808UR-4
 PI STA. = 1411+96.95
 $\Delta = 3^{\circ} 18' 13''$ (RT)
 $D = 0^{\circ} 10' 00''$
 $R = 34,397.77'$
 $T = 991.95'$
 $L = 1,983.34'$
 $E = 14.30'$
 $e = \dots$
 $T.R. = \dots$
 $S.E. RUN = \dots$
 P.C. STA. = 1402+05.00
 P.T. STA. = 1421+88.35



MATCH LINE STA. 1415+00



MATCH LINE STA. 1415+00

MATCH LINE STA. 1430+00

FILE NAME =	USER NAME = braboypc	DESIGNED -	REVISED -
c:\pwwork\pwwork\braboypc\d0112640\d3689088-sht-plan.dgn		DRAWN -	REVISED -
	PLOT SCALE = 50.0000 / IN.	CHECKED -	REVISED -
	PLOT DATE = Sep 07, 2009 - 01:26:22 PM	DATE -	REVISED -

STATE OF ILLINOIS
 DEPARTMENT OF TRANSPORTATION

PLANS SHEETS STA 1400+00 TO STA 1430+00

SCALE: SHEET NO. OF SHEETS STA. TO STA.

**06-[7BR&BR-1,7VB-M,6BR&6,7 RS-1 & I]

F.A. RTE.	SECTION	COUNTY	TOTAL SHEETS	SHEET NO.
1-80	**	BUREAU	344	31
CONTRACT NO. 66908			ILLINOIS FED. AID PROJECT	