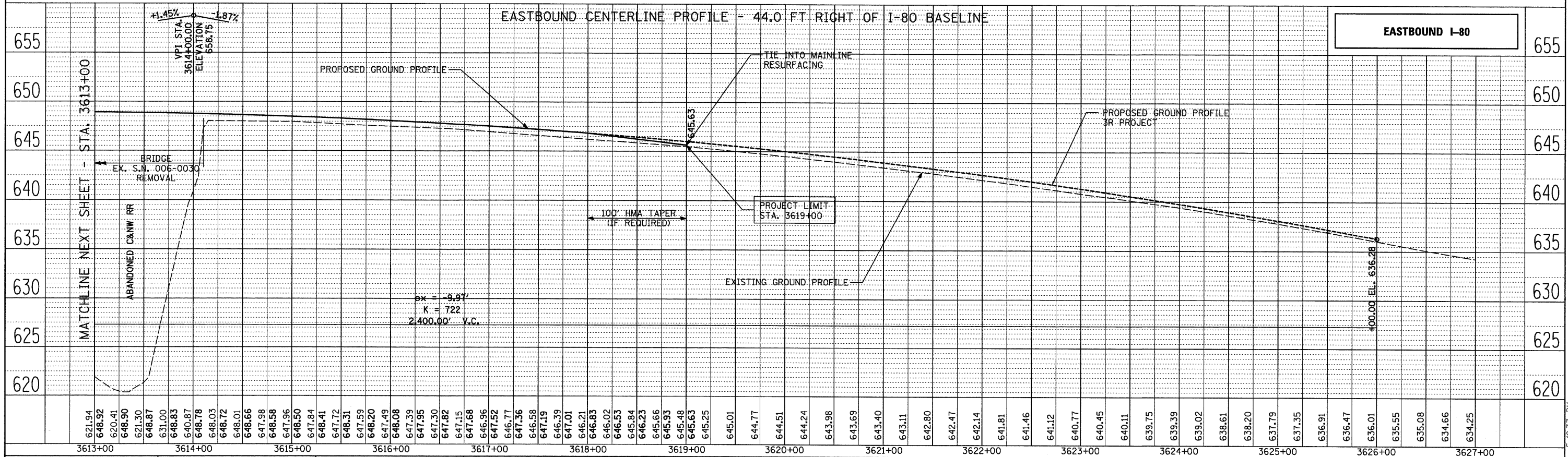
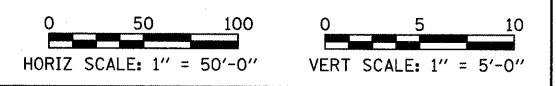
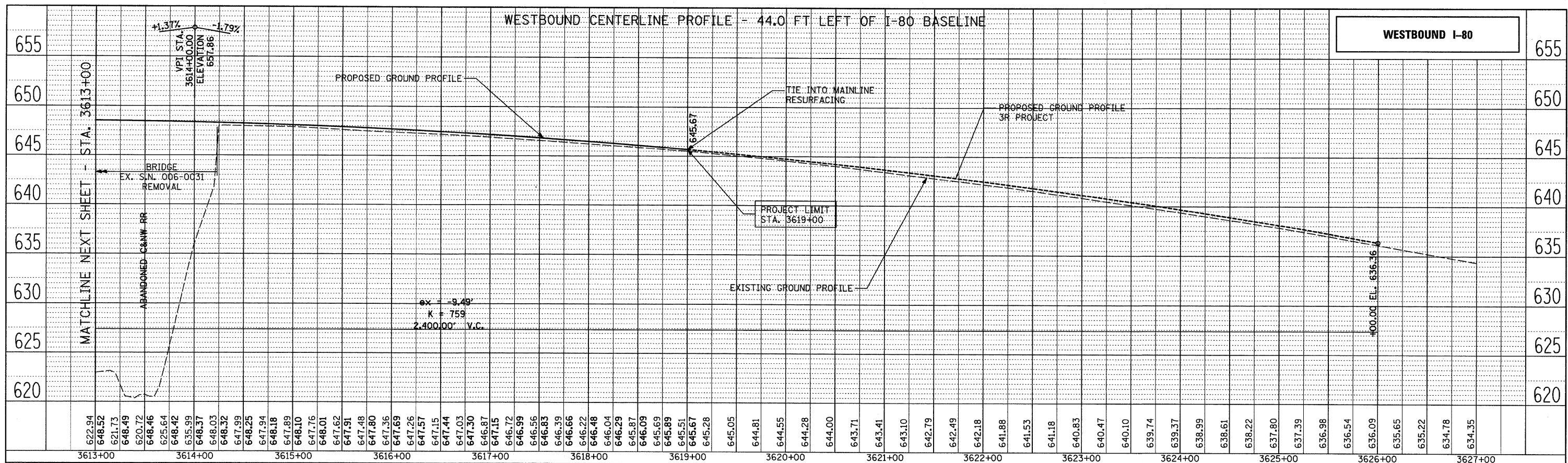


PLAN
 SURVEYED
 PLOTTED
 CHECKED
 REVISIONS
 NO. DATE
 CADD FILE NAME

PROFILE
 SURVEYED
 PLOTTED
 CHECKED
 REVISIONS
 NO. DATE
 STRUCTURE NOTATIONS: OKRD



TYLIN INTERNATIONAL USER NAME = #USER# PLOT SCALE = #SCALE# PLOT DATE = 8/14/2009	DESIGNED - CAC	REVISED -	STATE OF ILLINOIS DEPARTMENT OF TRANSPORTATION F.A.I. ROUTE 80 (I-80) EXISTING AND PROPOSED PROFILES	F.A. RTE. 80	SECTION	COUNTY	TOTAL SHEETS NO.	SHEET NO.	
	DRAWN - CAC	REVISED -		BUREAU	CONTRACT NO. 66908				
	CHECKED - JDF	REVISED -		SCALE: AS SHOWN SHEET NO. 2 OF 2 SHEETS STA. 3613+00 TO STA. 3627+00					
DATE - 08/14/2009	REVISED -						FED. ROAD DIST. NO. ILLINOIS FED. AID PROJECT * 06-17BR & BR-1,7VB-M, 6BR & 6, 7 RS-1 & 1		

8/14/2009 5:40:33 PM
 p:\602429.1(i-80)\road\602429.40.d\203803PRF2.dgn