

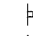



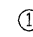
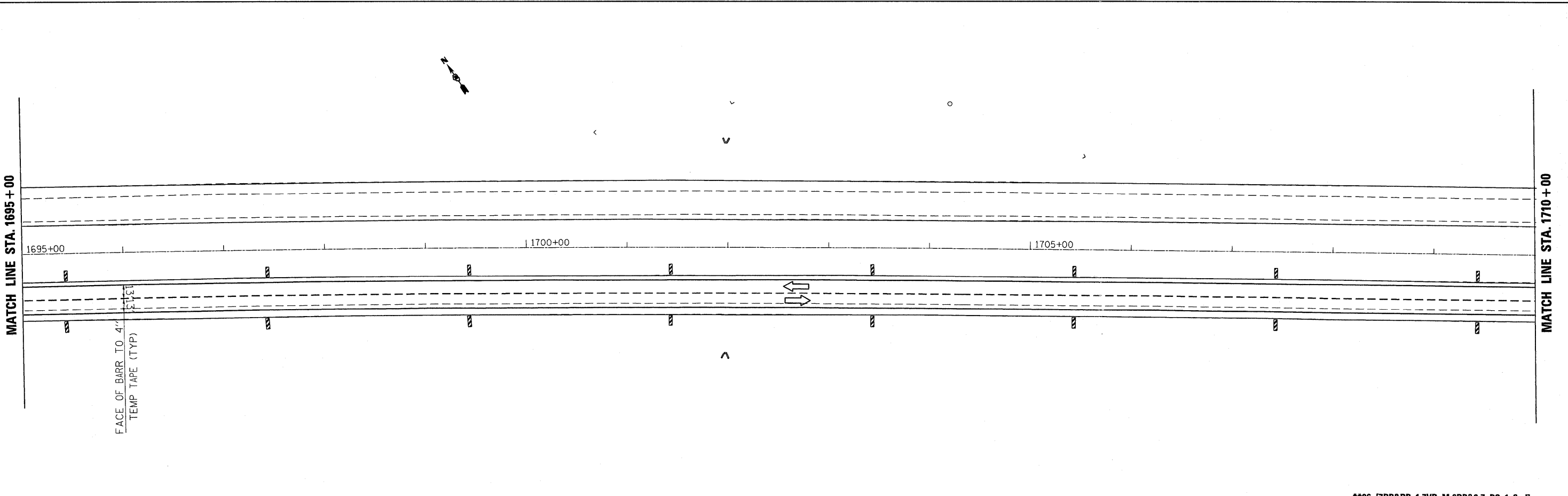
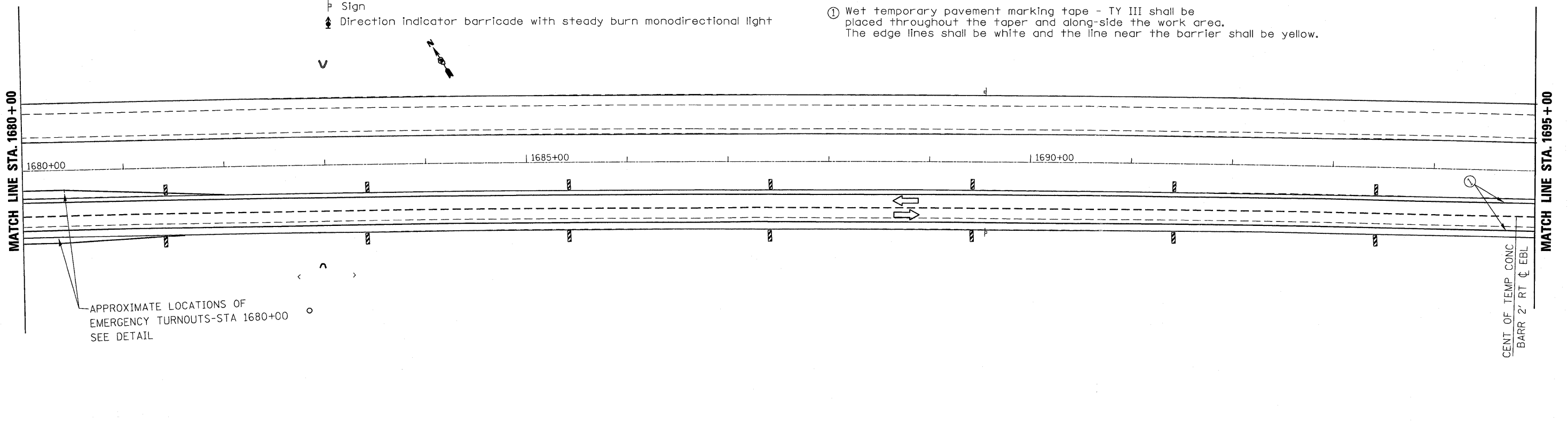


SYMBOLS

-  Verticle Panel (back to back)
-  Arrow board
-  Sign
-  Direction Indicator barricade with steady burn monodirectional light

-  Drum with steady burn monodirectional light
-  Type II barricade, drum, or vertical barricade with steady burn monodirectional light
-  ① Wet temporary pavement marking tape - TY III shall be placed throughout the taper and along-side the work area. The edge lines shall be white and the line near the barrier shall be yellow.



**06-[7BR&BR-1,7VB-M,6BR&6,7 RS-1 & I]

FILE NAME =	USER NAME = braboypc	DESIGNED -	REVISED -
c:\pwwork\FWIDOT\BRABOYPC\d0112640\d365908-shr-staging.dgn		DRAWN -	REVISED -
		CHECKED -	REVISED -
		DATE -	REVISED -

**STATE OF ILLINOIS
DEPARTMENT OF TRANSPORTATION**

STAGE I CONSTRUCTION

SCALE: SHEET NO. OF SHEETS STA. TO STA.

F.A. RTE.	SECTION	COUNTY	TOTAL SHEETS	SHEET NO.
I-80	**	BUREAU	344	69
CONTRACT NO. 66908				
ILLINOIS FED. AID PROJECT				