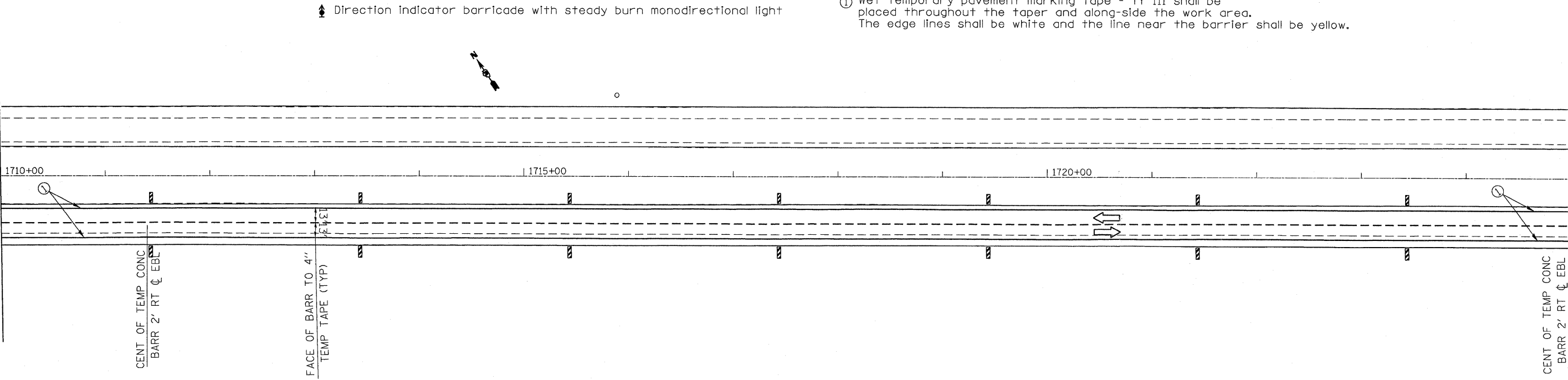


SYMBOLS

- ▨ Vertical Panel (back to back)
- ↑ Arrow board
- ⊥ Sign
- ↔ Direction Indicator barricade with steady burn monodirectional light

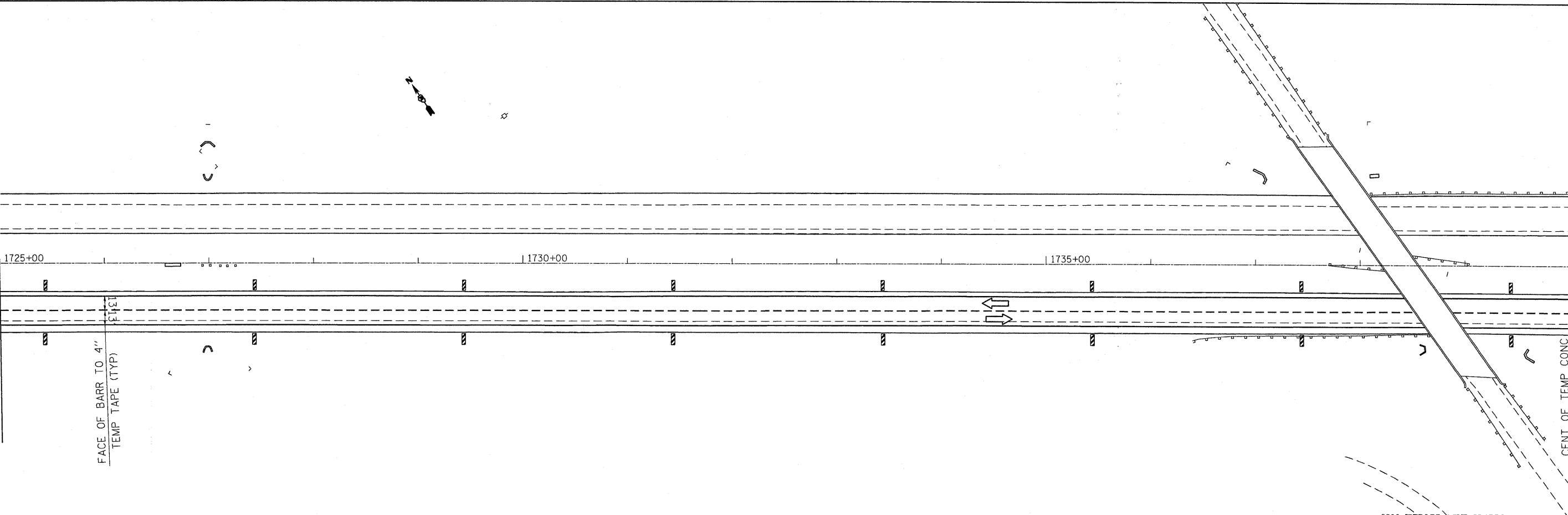
- Drum with steady burn monodirectional light
- ⊥ Type II barricade, drum, or vertical barricade with steady burn monodirectional light
- ① Wet temporary pavement marking tape - TY III shall be placed throughout the taper and along-side the work area. The edge lines shall be white and the line near the barrier shall be yellow.

MATCH LINE STA. 1710+00



MATCH LINE STA. 1725+00

MATCH LINE STA. 1725+00



MATCH LINE STA. 1740+00

**06-[7BR&BR-1,7VB-M,6BR&6.7 RS-1 & I]

FILE NAME =	USER NAME = braboypc	DESIGNED -	REVISED -
c:\pwork\PWIDOT\BRABOYPC\d0112640\d365908-shr-staging.dgn		DRAWN -	REVISED -
PLOT SCALE = 50.0000' / IN.		CHECKED -	REVISED -
PLOT DATE = Sep 07, 2009 - 01:11:31 PM		DATE -	REVISED -

STATE OF ILLINOIS
DEPARTMENT OF TRANSPORTATION

STAGE I CONSTRUCTION

SCALE: SHEET NO. OF SHEETS STA. TO STA.

F.A. RTE.	SECTION	COUNTY	TOTAL SHEETS	SHEET NO.
I-80	**	BUREAU	344	70
CONTRACT NO. 66908				
ILLINOIS FED. AID PROJECT				