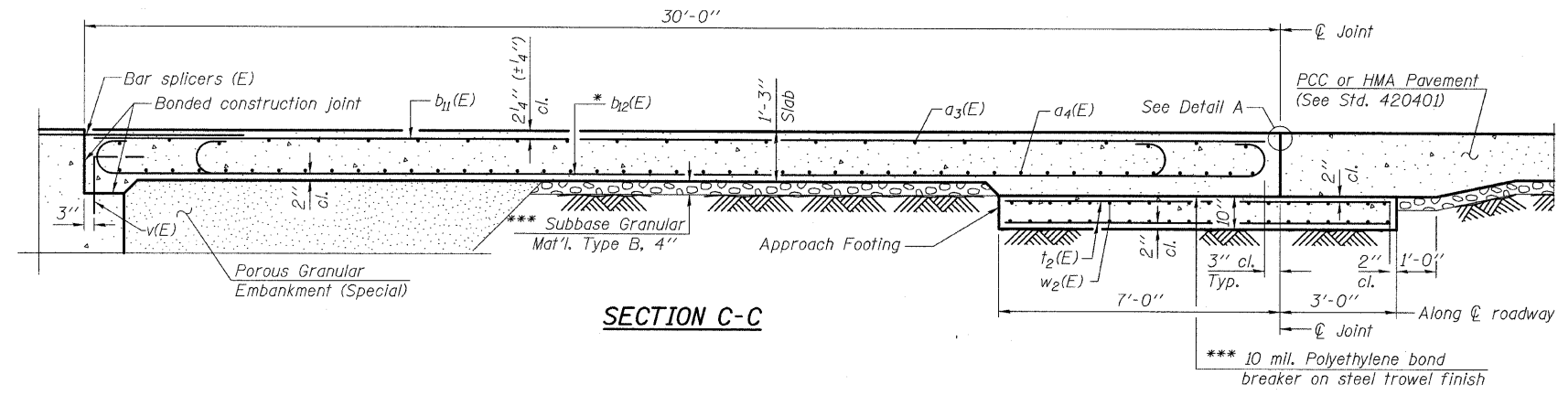
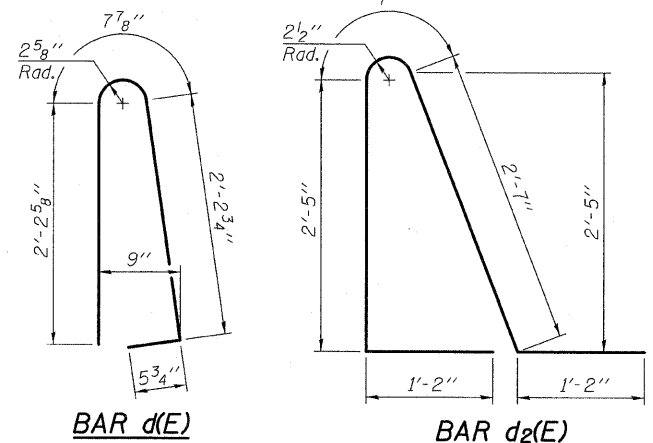


STATE OF ILLINOIS
DEPARTMENT OF TRANSPORTATION

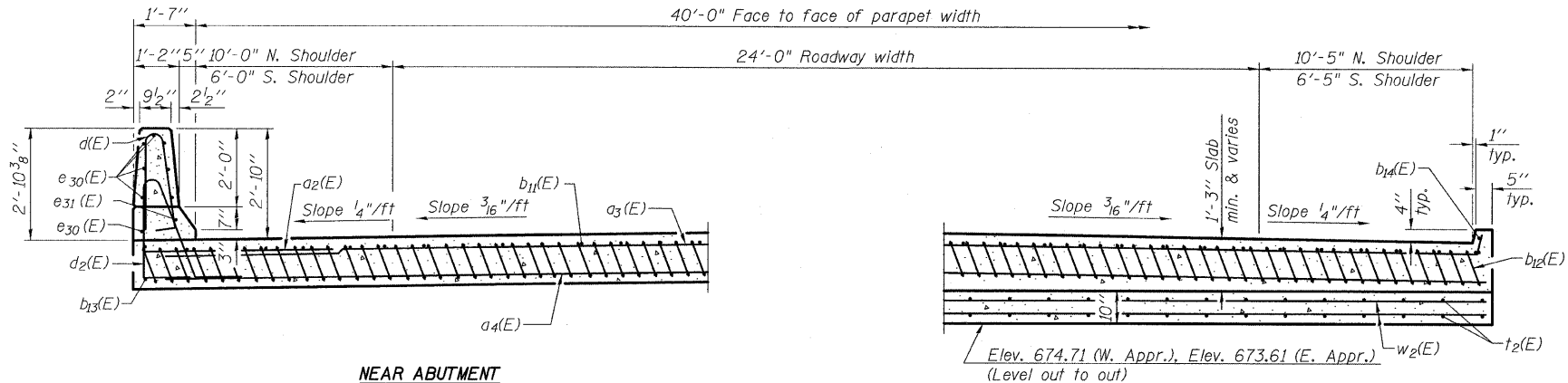
Notes:
See sheet 23 of 59 for Detail A and View B-B.
Approach slab and parapet concrete shall be paid for as Concrete Superstructure.
Approach footing concrete shall be paid for as Concrete Structures.
Reinforcement shall be paid for as Reinforcement Bars, Epoxy Coated.
For v(E) bar details, see sheet 21 of 59.
The approach footing maximum applied service bearing pressure (Qmax) = 2.0 ksf.
For bar splicer details, see sheet 52 of 59.
Cost of excavation for approach footing included with Concrete Structures.
For Porous Granular Embankment (Special) and drainage treatment details, see sheet 2 of 59.



SECTION C-C



* Tilt #9 b12(E) bars as required to maintain clearance.
*** Cost included with Concrete Superstructure.



NEAR ABUTMENT

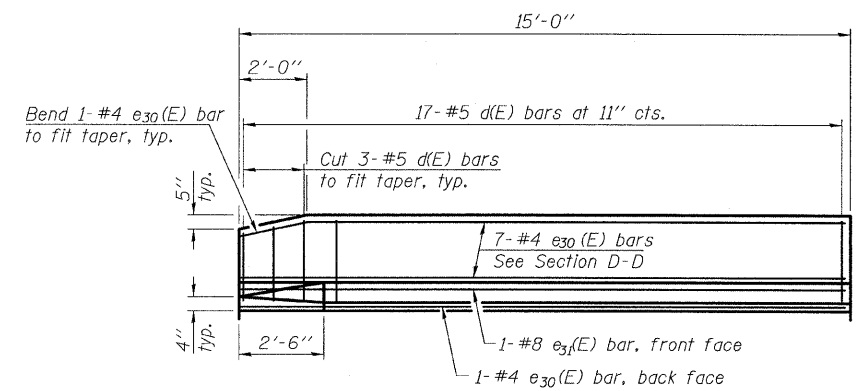
SECTION D-D
(See Plan for dimensions not shown)

AT APPROACH FOOTING

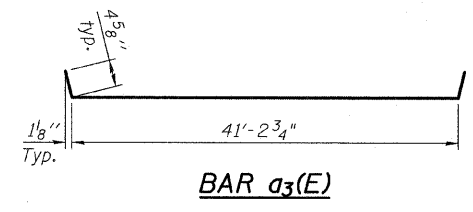
TWO APPROACHES
BILL OF MATERIAL

Bar	No.	Size	Length	Shape
a2(E)	48	#6	6'-0"	—
a3(E)	50	#4	42'-0"	—
a4(E)	92	#5	41'-6"	—
b11(E)	68	#4	29'-8"	—
b12(E)	200	#9	29'-9"	U
b13(E)	4	#4	14'-8"	—
b14(E)	4	#4	14'-8"	—
d(E)	68	#5	5'-7"	U
d2(E)	68	#5	7'-11"	U
e30(E)	32	#4	14'-8"	—
e31(E)	4	#8	14'-8"	—
t2(E)	168	#4	9'-8"	—
w2(E)	80	#5	41'-6"	—
Concrete Superstructure			Cu. Yd.	126.5
Concrete Structures			Cu. Yd.	25.8
Reinforcement Bars, Epoxy Coated			Pound	33,450

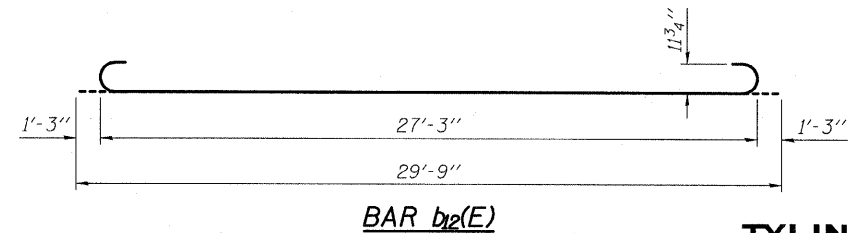
(1) 4,540 pounds of total weight is considered Reinforcement Bars, Epoxy Coated for the Substructure



VIEW E-E



BAR a3(E)



BAR b12(E)

DESIGNED - IM
CHECKED - PDF
DRAWN - IM
CHECKED - PDF

APPROACH SLAB DETAILS - II
STRUCTURE NO. 006-0170 EB

SHEET NO. 24	F.A. RTE. 80	SECTION *	COUNTY BUREAU	TOTAL SHEETS 344	SHEET NO. 118
59 SHEETS	FED. ROAD DIST. NO. ILLINOIS		FED. AID PROJECT		
			CONTRACT NO. 66908		

TYLIN INTERNATIONAL