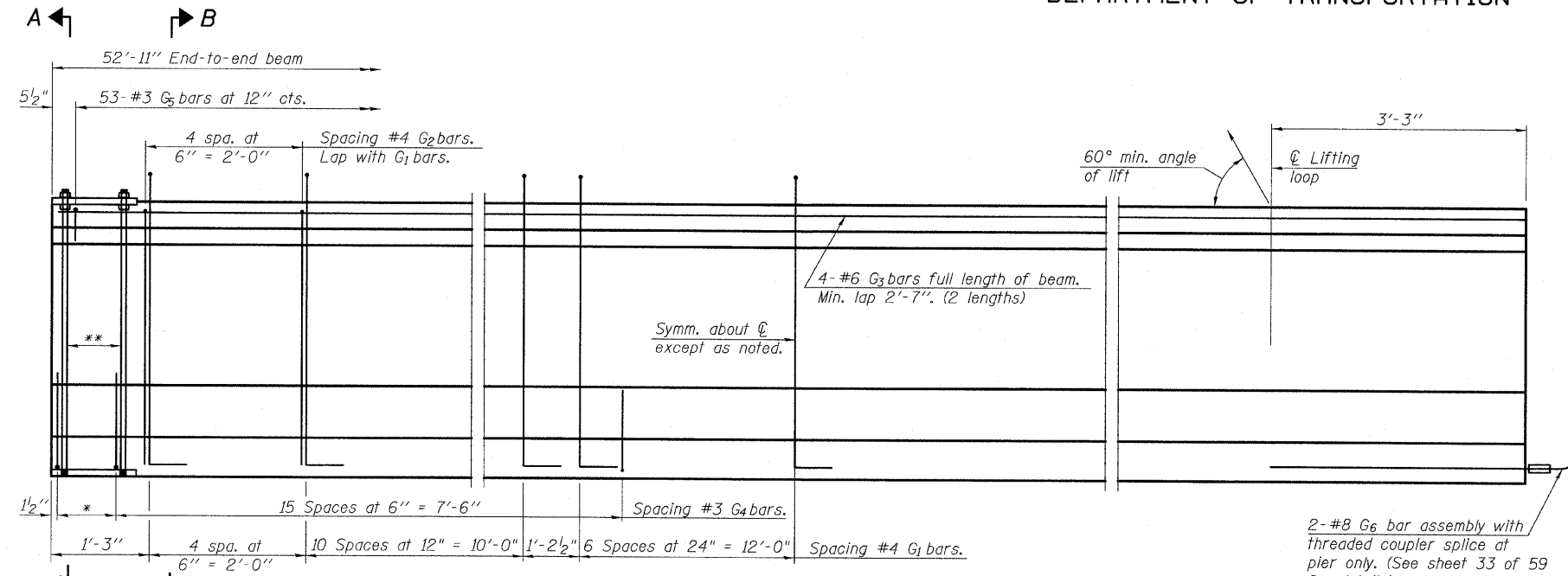


STATE OF ILLINOIS
DEPARTMENT OF TRANSPORTATION

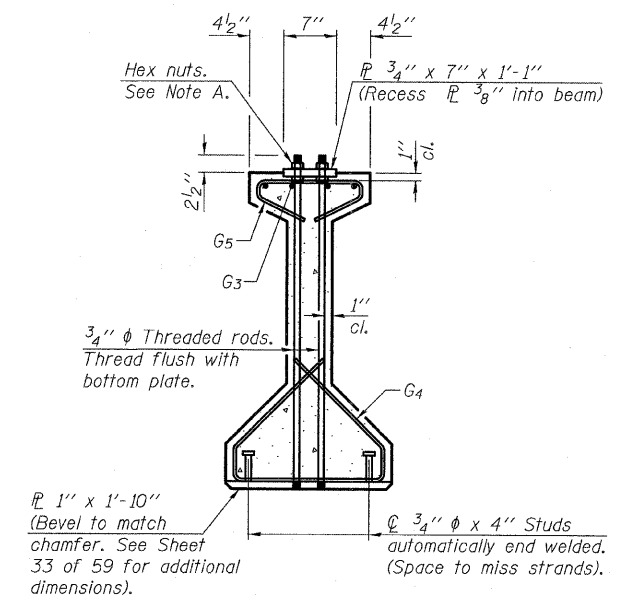


ELEVATION OF BEAM
(Showing reinforcement & dimensions)

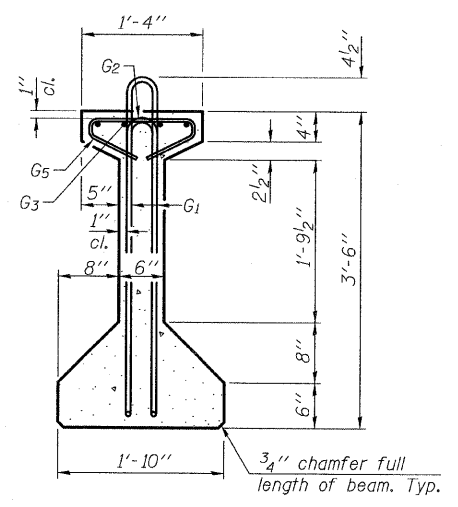
*3 spaces at 3" = 9".
**4-3/4" φ threaded dowel rods at 3" cts., Each Face.

2-#8 G6 bar assembly with threaded coupler splice at pier only. (See sheet 33 of 59 for details).

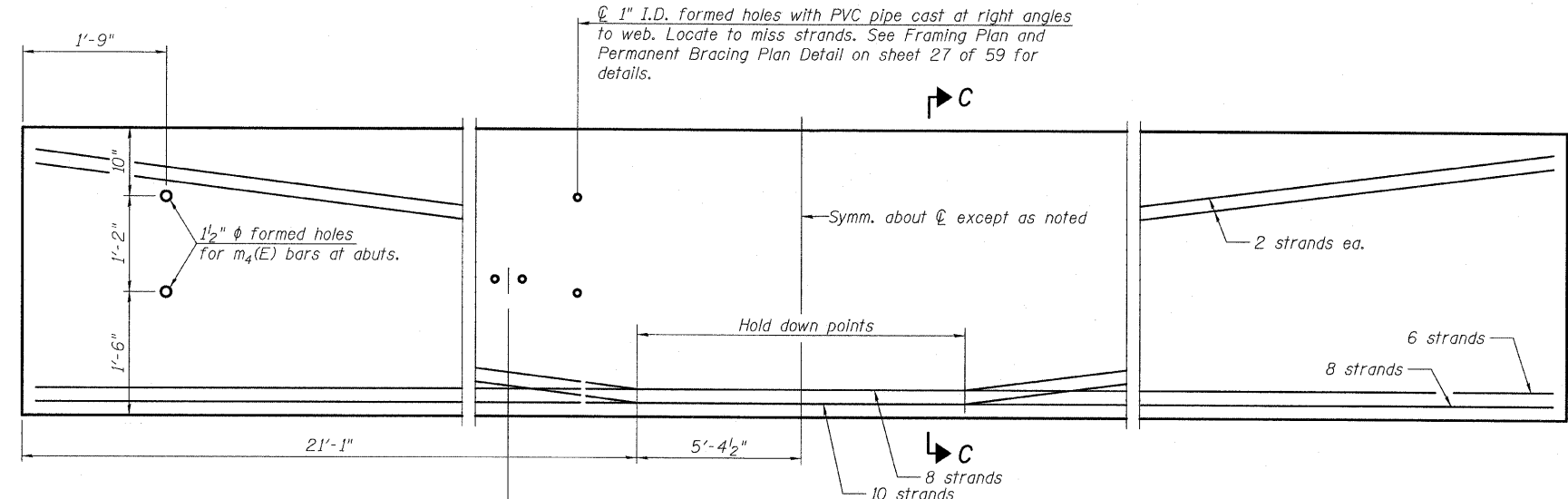
Note A:
Hex nuts (top and bottom) with lock washers (top). Only tighten sufficiently to compress lock washers.



SECTION A-A

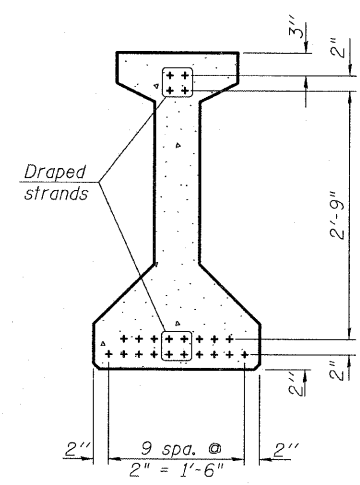


SECTION B-B



ELEVATION OF BEAM
(Showing prestressing steel)

Inserts for floor drain pipe clamps. Beams 1 & 7 only, locate to miss strands. See sheet 14 of 59 for drain locations.



SECTION C-C

*****BAR LIST
ONE BEAM ONLY**

Bar	No.	Size	Length	Shape
G1	43	#4	8'-5"	⊔
G2	10	#4	6'-8"	⊔
G3	8	#6	27'-8"	⊔
G4	38	#3	4'-11"	⊔
G5	53	#3	2'-6"	⊔
G6	2	#8	6'-6"	⊔

***For information only

Notes:
See sheet 33 of 59 for additional details and Bill of Material.
Required release strength, f'ci, shall be 5,000 psi.

DESIGNED	- PK
CHECKED	- PDF SP
DRAWN	- PK
CHECKED	- PDF

**42" PPC I-BEAM (SPAN 1)
STRUCTURE NO. 006-0170 EB**

SHEET NO. 28 59 SHEETS	F.A. RTE.	SECTION	COUNTY	TOTAL SHEETS	SHEET NO.
	80	*	BUREAU	344	122
FED. ROAD DIST. NO.			ILLINOIS FED. AID PROJECT	CONTRACT NO. 66908	

TYLIN INTERNATIONAL