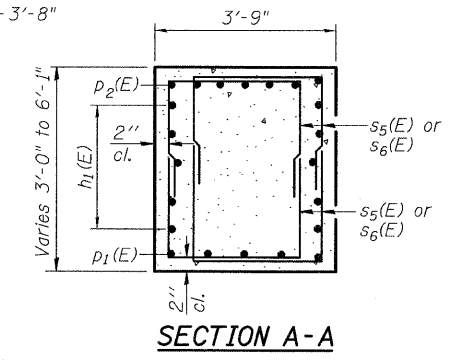
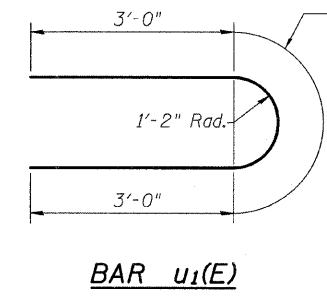
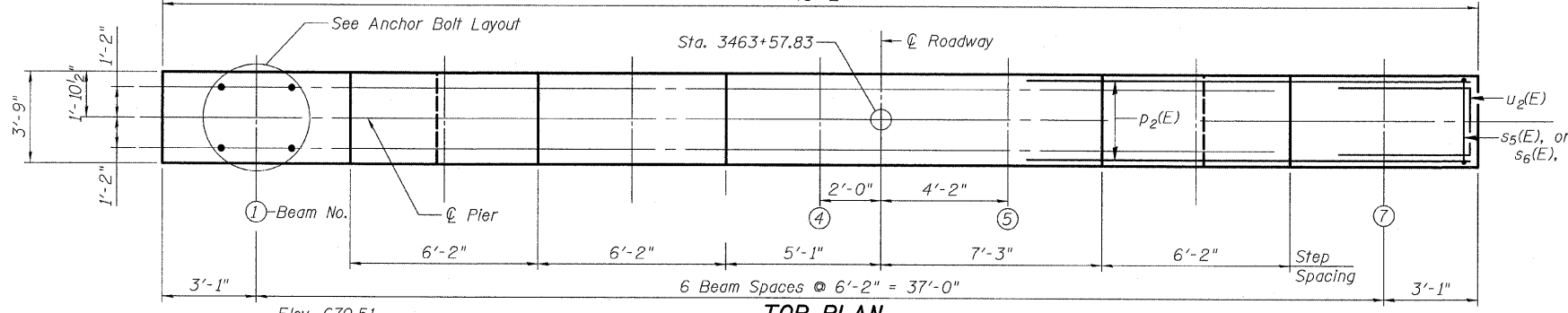


STATE OF ILLINOIS
DEPARTMENT OF TRANSPORTATION
43'-2"

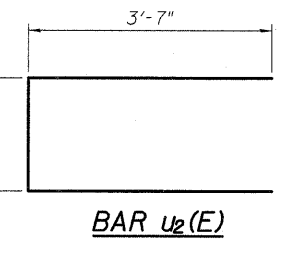
Notes:
Space reinforcement in cap to miss anchor bolts.
Pour steps monolithically with cap.
For details of piles, see sheet 53 of 59.



MINIMUM BAR LAP
#4 bar = 1'-8"

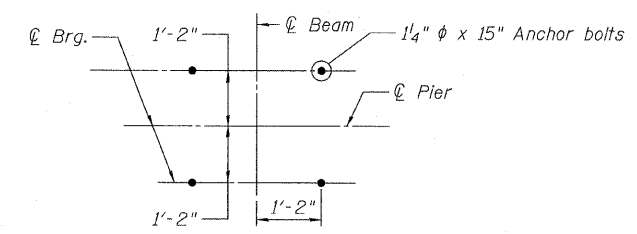
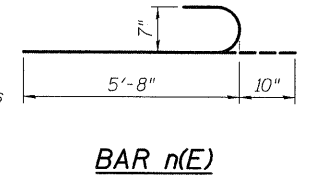
**PIER
BILL OF MATERIAL**

Bar No.	Size	Length	Shape	
h(E)	26	#5	22'-6"	—
h1(E)	10	#5	42'-10"	—
n(E)	54	#7	6'-6"	⌋
p1(E)	10	#5	11'-0"	—
p2(E)	7	#9	42'-10"	—
s5(E)	98	#4	10'-0"	⌋
s6(E)	24	#4	7'-10"	⌋
t(E)	28	#6	9'-8"	—
t1(E)	28	#8	9'-8"	—
u1(E)	26	#5	9'-8"	⌋
u2(E)	8	#6	10'-6"	⌋
v9(E)	54	#7	16'-9"	—
w(E)	20	#6	26'-8"	—
Structure Excavation		Cu. Yd.	64.3	
Concrete Structures		Cu. Yd.	89.3	
Reinforcement Bars, Epoxy Coated		Pound	7,860	
Furnishing Steel Piles, HP14x73		Foot	728	
Driving Piles		Foot	728	
Test Pile, HP14x73		Each	1	

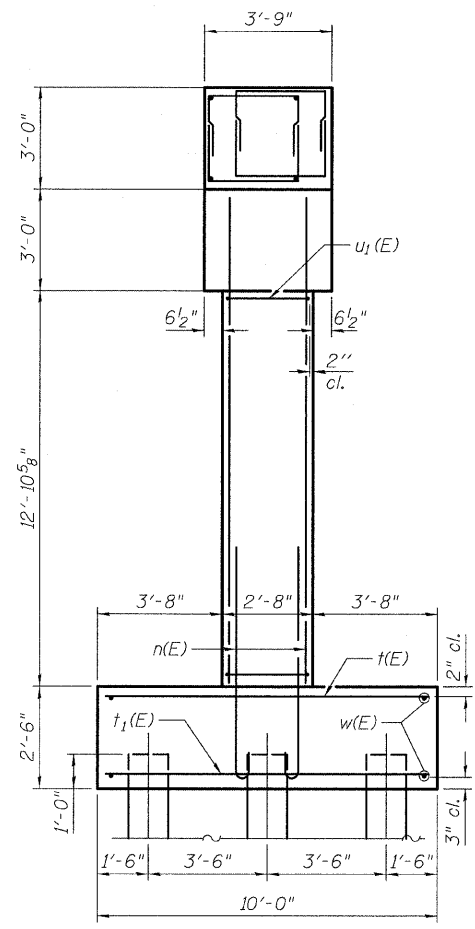


**BARS
A & B DIMENSIONS**

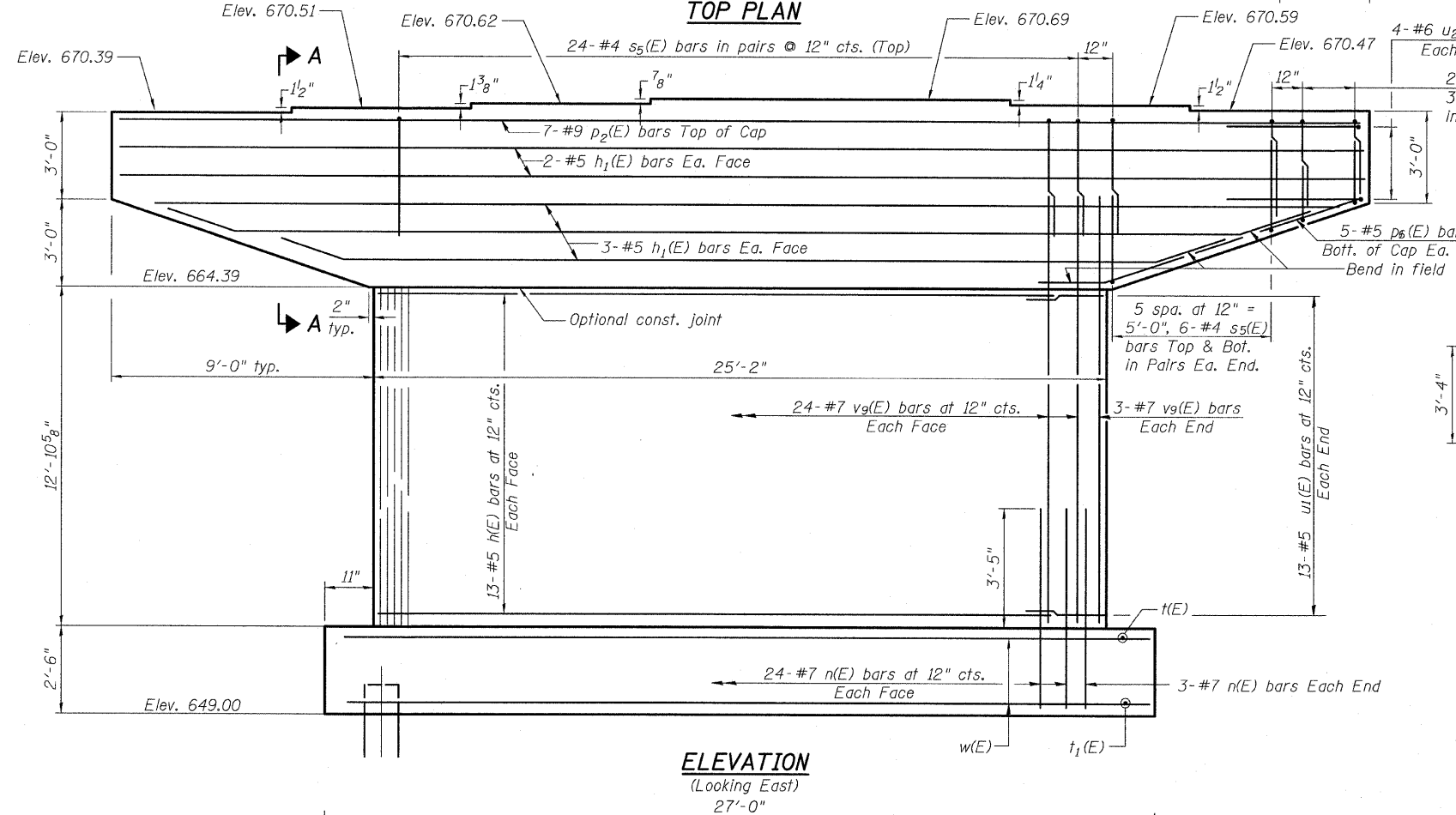
Bar	A	B
s5(E)	2'-8"	3'-8"
s6(E)	2'-8"	2'-7"



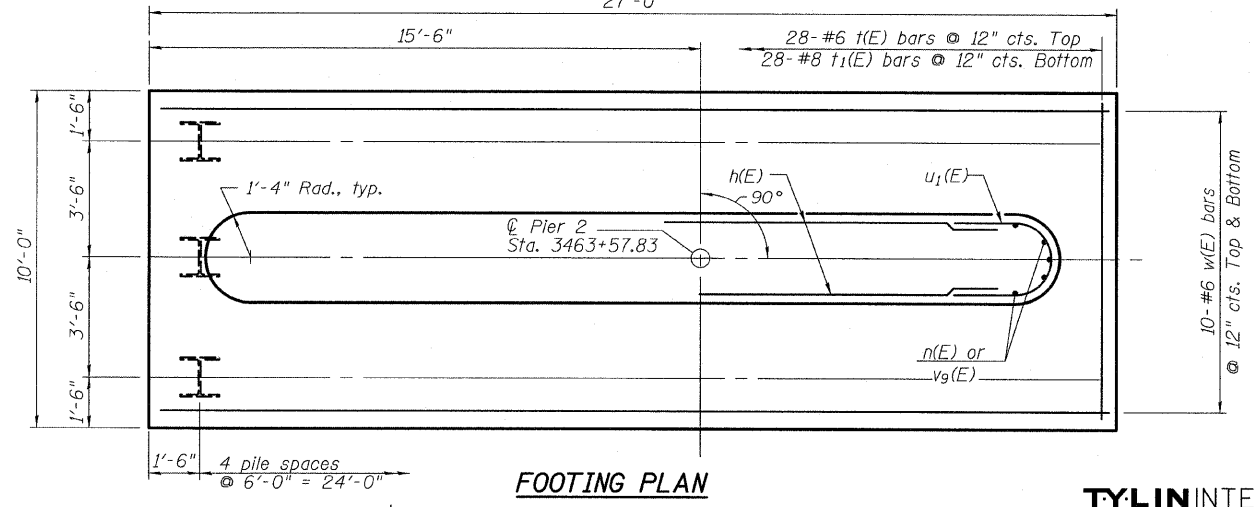
**PIER 2
STRUCTURE NO. 006-0171 WB**



END VIEW



**ELEVATION
(Looking East)**
27'-0"



FOOTING PLAN

PILE DATA
Type: HP 14x73
Nominal Required Bearing: 400 kips
Factored Resistance Available: 200 kips
Est. Length: 52'
No. Production Piles: 14
No. Test Piles: 1

DESIGNED	- SP
CHECKED	- PDF
DRAWN	- IM,FK
CHECKED	- PDF

SHEET NO. 49 59 SHEETS	F.A. RTE. 80	SECTION *	COUNTY BUREAU	TOTAL SHEETS 344	SHEET NO. 143
	FED. ROAD DIST. NO.		ILLINOIS FED. AID PROJECT		