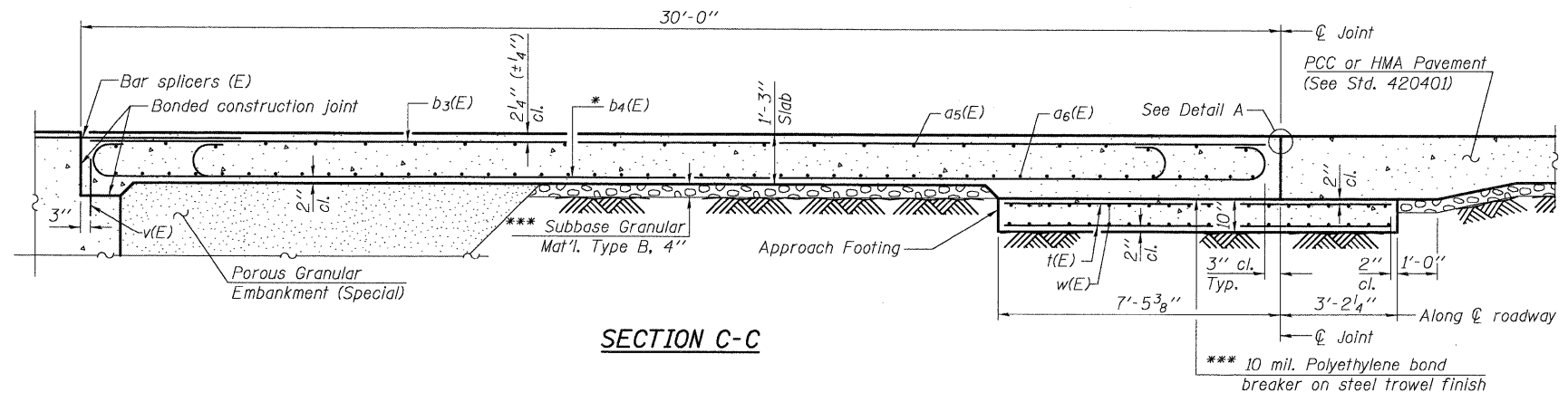
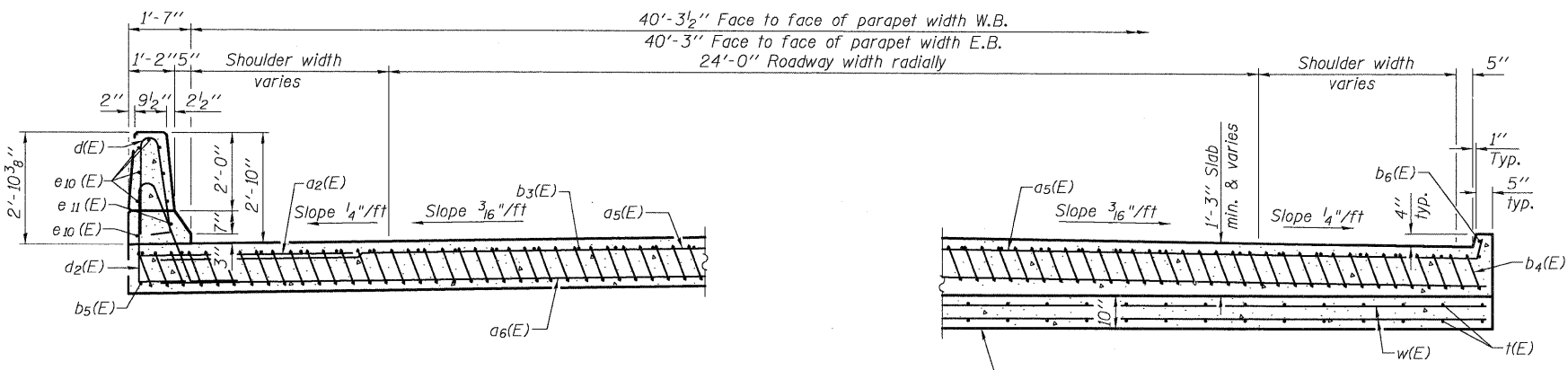


Notes:
 See sheet 22 of 45 for Detail A and View B-B.
 Approach slab and parapet concrete shall be paid for as Concrete Superstructure.
 Approach footing concrete shall be paid for as Concrete Structures.
 Reinforcement shall be paid for as Reinforcement Bars, Epoxy Coated.
 For v(E) bar details, see sheet 18 & 19 of 45.
 The approach footing maximum applied service bearing pressure (Qmax) = 2.0 ksf.
 For bar splicer details, see sheet 39 of 45.
 Cost of excavation for approach footing included with Concrete Structures.
 For Porous Granular Embankment (Special) and drainage treatment details, see sheet 2 of 45.



SECTION C-C



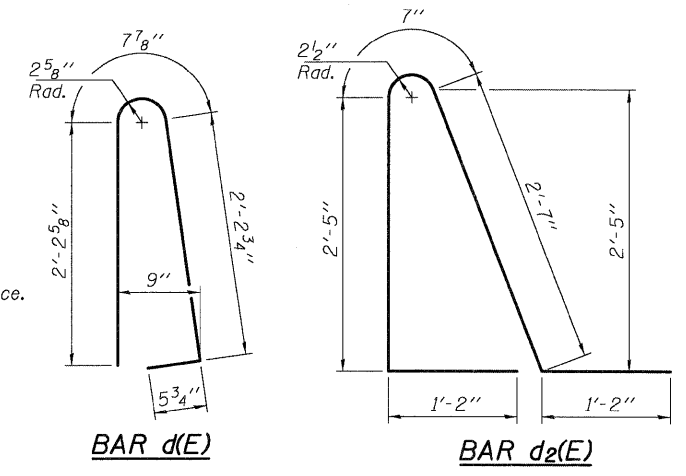
NEAR ABUTMENT

SECTION D-D

(See Plan for dimensions not shown)

AT APPROACH FOOTING

Elev. 660.61 W.B. W. Appr.
 Elev. 660.59 W.B. E. Appr.
 Elev. 660.36 E.B. W. Appr.
 Elev. 660.80 E.B. E. Appr.
 (Level out to out)



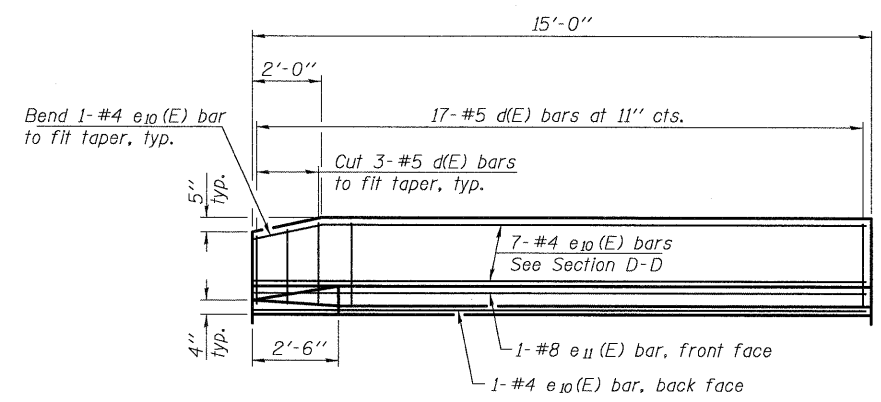
BAR d(E)

BAR d2(E)

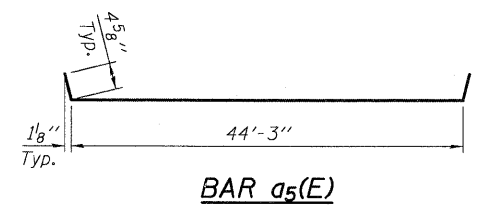
* Tilt #9 b4(E) bars as required to maintain clearance.
 *** Cost Included with Concrete Superstructure.

FOUR APPROACHES
 BILL OF MATERIAL

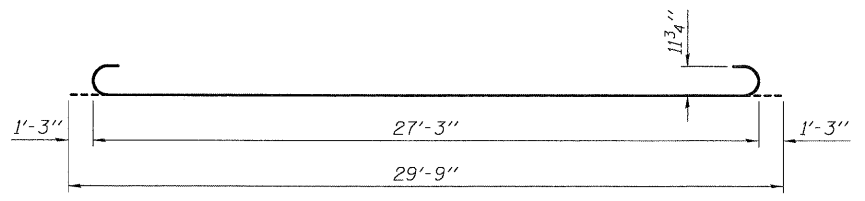
Bar	No.	Size	Length	Shape
a2(E)	96	#6	6'-6"	—
a5(E)	100	#4	45'-1"	—
a6(E)	184	#5	44'-3"	—
b3(E)	164	#4	29'-8"	—
b4(E)	388	#9	29'-9"	—
b5(E)	8	#4	14'-8"	—
b6(E)	8	#4	14'-8"	—
d(E)	136	#5	5'-7"	U
d2(E)	136	#5	7'-11"	U
e10(E)	64	#4	14'-8"	—
e11(E)	8	#8	14'-8"	—
t(E)	344	#4	10'-3"	—
w(E)	160	#5	44'-3"	—
Concrete Superstructure		Cu. Yd.	282.2	
Concrete Structures		Cu. Yd.	55.1	
Reinforcement Bars, Epoxy Coated		Pound	67,690	



VIEW E-E



BAR a5(E)



BAR b4(E)

(Sheet 2 of 2)

BRIDGE APPROACH SLAB DETAILS
 SN 006-0172 (EB) & SN 006-0173 (WB)

PLOT DATE = 09/08/2009
 FILE NAME = \\0060172.0173-66908-023-bar-eh12.dgn
 USER NAME = CFC

BA-R 10-31-08

CB Coombe-Bloxdorf P.C.
 -CIVIL ENGINEERS-
 -STRUCTURAL ENGINEERS-
 -LAND SURVEYORS-
 Design Firm License No. 184-002703

PROJECT NO.	05061
SCALE	
DATE	6/25/09
DESIGN BY	RM/MCB
DRAWN BY	TFG
CHECKED BY	MCB

SHEET NO. 23	F.A.I. RTE. 80	SECTION *	COUNTY BUREAU	TOTAL SHEETS 344	SHEET NO. 176
45 SHEETS	CONTRACT NO. 66908				
FED. ROAD DIST. NO. 7 ILLINOIS FED. AID PROJECT					

*06-L7BR & BR-1, TVB-M, 6BR & 6, 7 RS-1 & IJ