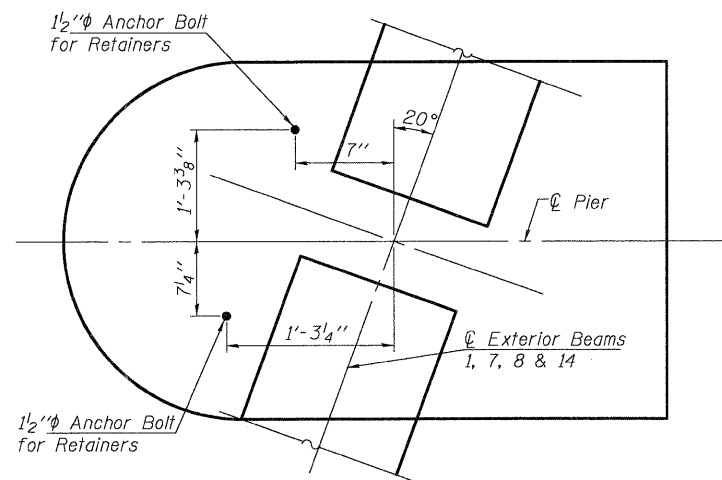
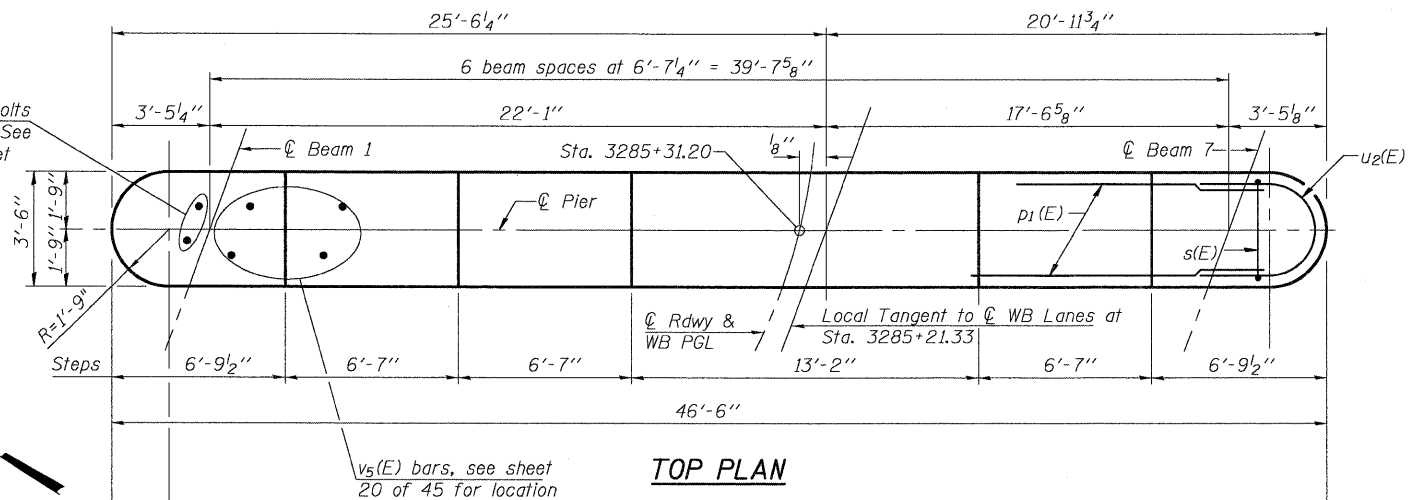
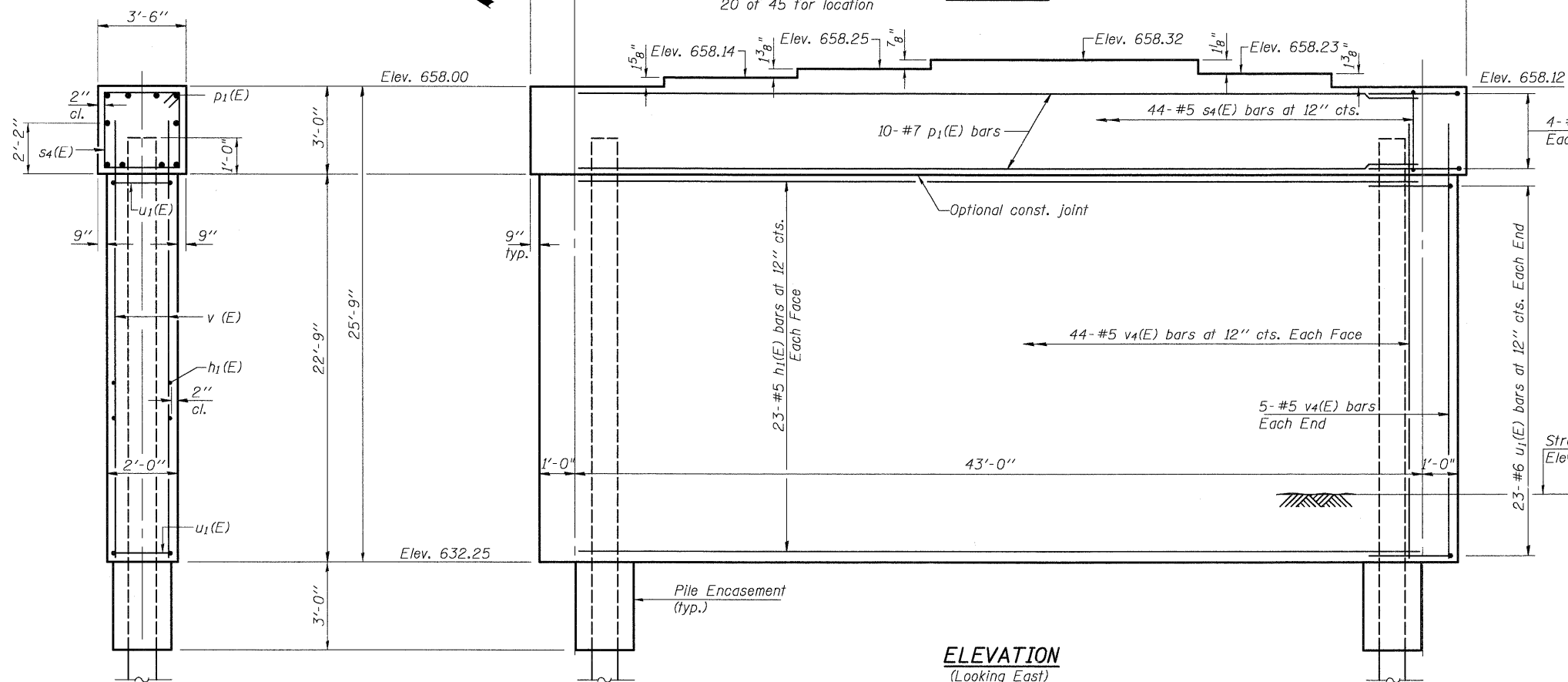


Notes:
 Space reinforcement in cap to miss anchor bolts.
 Pour steps monolithically with cap.
 For details of piles, see sheet 38 of 45.

1/2" φ Anchor Bolts
 for Retainers, See
 Detail this sheet
 for location

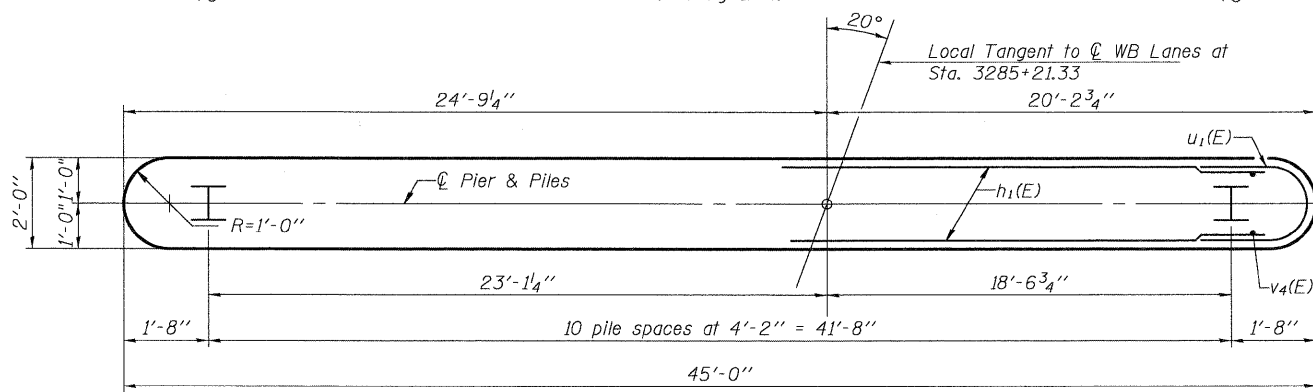


ANCHOR BOLT LOCATION DETAIL

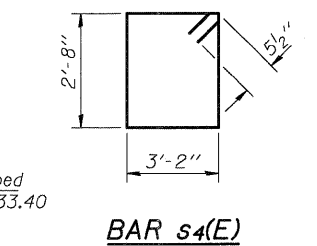


ELEVATION
 (Looking East)

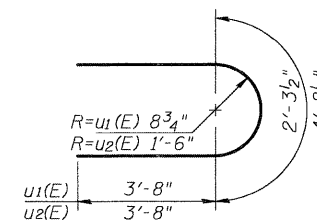
END VIEW



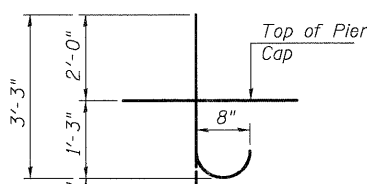
PLAN



BAR s4(E)



BARS u1(E) & u2(E)



BAR v5(E)

BILL OF MATERIAL

Bar	No.	Size	Length	Shape
h1(E)	46	#5	43'-0"	—
p1(E)	10	#7	43'-0"	—
s4(E)	44	#5	12'-7"	□
u1(E)	46	#6	9'-8"	U
u2(E)	8	#6	12'-1"	U
v4(E)	98	#5	24'-11"	—
v5(E)	36	#8	4'-2"	U
Concrete Structures		Cu. Yd.	94.1	
Reinforcement Bars, Epoxy Coated		Pound	7280	
Furnishing Steel Piles, HP12x53		Foot	740	
Driving Piles		Foot	740	
Test Pile, Steel HP12x53		Each	1	
Underwater Structure Excavation		Each	1	
Protection-Location 2 Concrete Encasement		Cu. Yd.	3.8	

PIER 2 WB
 SN 006-0173 (WB)

PILE DATA

Type: Steel HP12 x 53
 Nominal Required Bearing: 315 kip
 Allowable Resistance Available: 105 kip
 Est. Length: 74 ft.
 No. Production Piles: 10
 No. Test Piles: 1

NOTE

If a portion of the pier wall or concrete encasement is under water, reinforcement may be placed underwater into forms. Concrete shall be tremied according to Article 503.08 of the Standard Specifications to an elevation of 1'-0" above the water line at the time of construction.

PLOT DATE = 09/06/2009
 PLOT SCALE = 1/8" = 1'-0"
 USER NAME = CFC

CB Coombe-Bloxdorf P.C.
 - CIVIL ENGINEERS -
 - STRUCTURAL ENGINEERS -
 - LAND SURVEYORS -
 Design Firm License No. 184-002703

PROJECT NO. 05061	DATE 8/05/09
SCALE	DESIGN BY RM/MCB
SHEET NO. 35	DRAWN BY TFG
45 SHEETS	CHECKED BY MCB

F.A.I. RTE. 80	SECTION *	COUNTY BUREAU	TOTAL SHEETS 344	SHEET NO. 188
CONTRACT NO. 66908				
FED. ROAD DIST. NO. 7 ILLINOIS FED. AID PROJECT				

*06-I7BR & BR-1, TVB-M, 6BR & 6, 7 RS-1 & J1