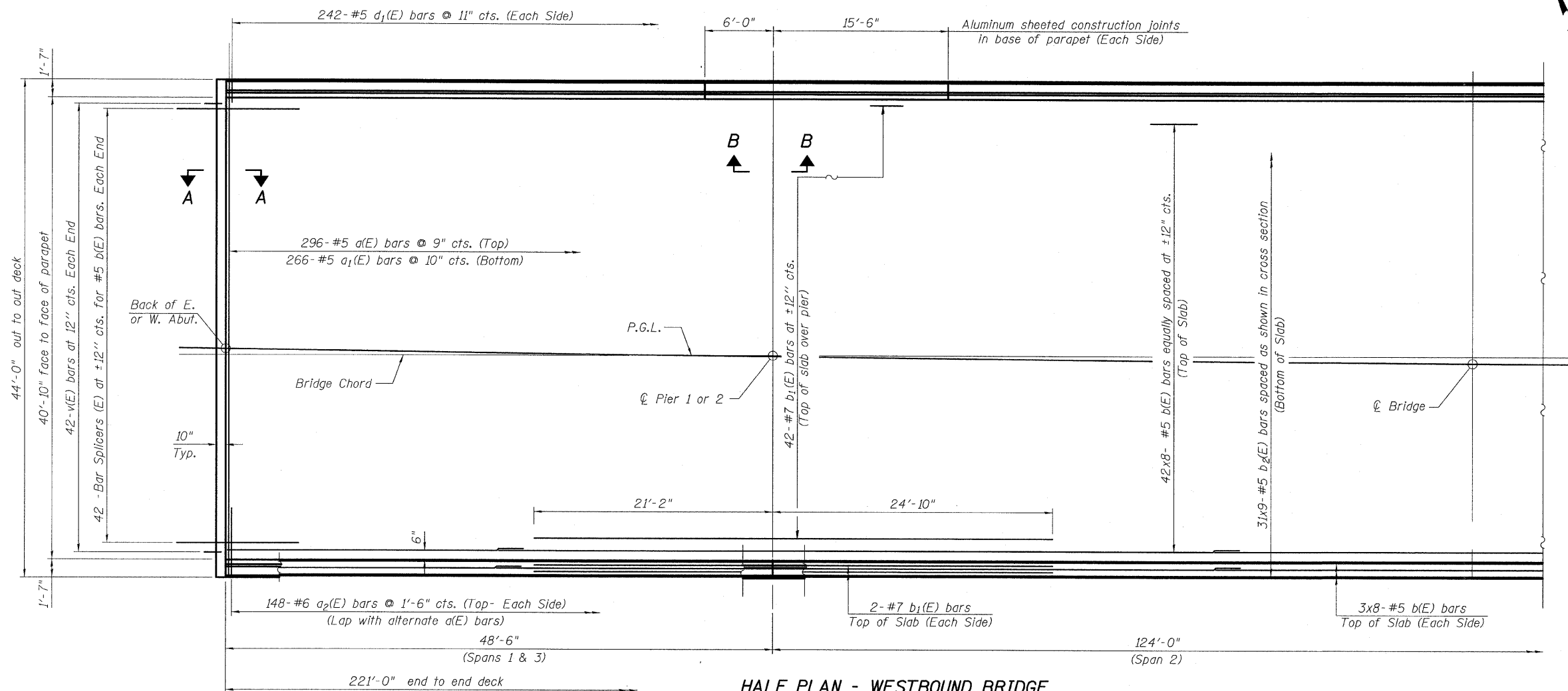


STATE OF ILLINOIS
DEPARTMENT OF TRANSPORTATION



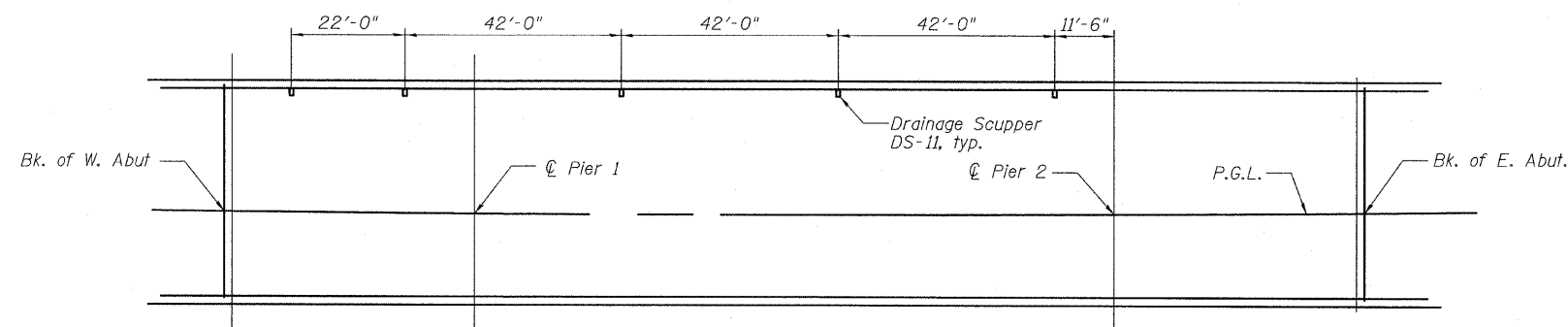
HALF PLAN - WESTBOUND BRIDGE
(Eastbound Bridge by rotation thru 180°)

MINIMUM BAR LAPS

#5 bar = 2'-2"
#6 bar = 2'-7"

NOTES:

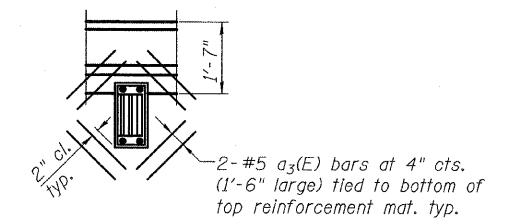
1. See Sheet 14 of 39 for Superstructure details and Bill of Materials.
2. For Sections A-A and B-B and diaphragm details see Sheet 13 of 39.
3. Bars indicated thus: 20x3-#5 etc. indicates 20 lines of bars with 3 lengths per line.
4. See Sheet 12 of 39 for Parapet reinforcement.



DRAINAGE SCUPPER LOCATION PLAN

(Eastbound Bridge Only)

Note:
Scuppers shall be placed 4" into concrete parapet.



PLAN

Note:
Cut longitudinal reinforcement to clear drainage scuppers.

DESIGNED	I.M.
CHECKED	PDF
DRAWN	I.M.
CHECKED	PDF

SHEET NO. 11 39 SHEETS	F.A. RTE. 80	SECTION *	COUNTY BUREAU	TOTAL SHEETS 394	SHEET NO. 209
	CONTRACT NO. 66908				
FED. ROAD DIST. NO.		ILLINOIS FED. AID PROJECT			

TYLINT INTERNATIONAL