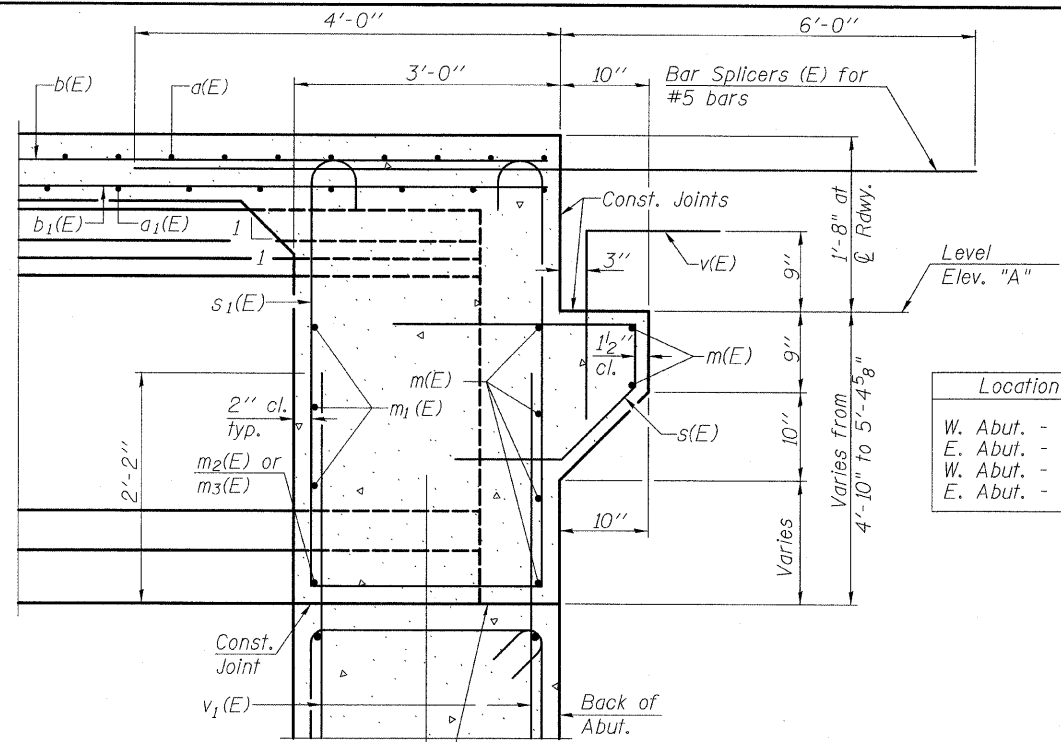


STATE OF ILLINOIS  
DEPARTMENT OF TRANSPORTATION



Location	Elev. "A"
W. Abut. - WB	645.59
E. Abut. - WB	646.56
W. Abut. - EB	645.88
E. Abut. - EB	646.92

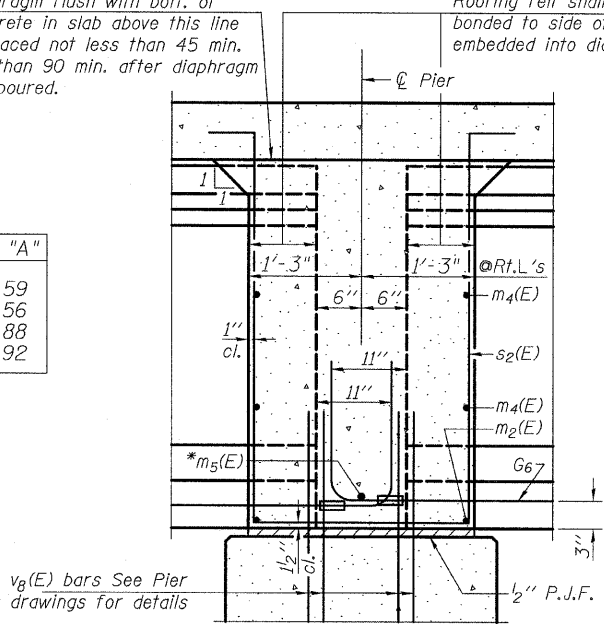
**SECTION A-A**

Beam ends shall be set on an initial 1/2" min. grout (2:1 sand and portland cement, very dry mix) to provide full bearing. Any excess grout squeezed out from under the beam shall be removed. Cost included with Concrete Structures.

Notes:  
Reinforcement bars in diaphragm are billed with superstructure on sheet 14 of 39.  
Concrete in diaphragm is included with Concrete Superstructure on sheet 14 of 39.  
For details of bars s(E), s1(E) and s2(E) see sheet 14 of 39.  
The s(E), s1(E) and s2(E) bars shall be placed parallel to the beams. Spacing for these bars shall be at right angles to the beams.  
Cost of 90 Lb. roofing felt is included with Concrete Superstructure. The side retainer shall be galvanized after shop fabrication according to AASHTO M 111. Cost of side retainer and anchor bolts shall be included with Concrete Structures.  
Anchor bolt assemblies shall be galvanized according to Article 1006.09 of the Standard Specifications.  
Anchor bolts shall be ASTM F1554 all-thread (or an Engineer-approved alternate material) of the grade(s) and diameter(s) specified. ASTM A307 Grade C anchor bolts may be used in lieu of ASTM F1554 Grade 36 (Fy=36ksi). The corresponding specified grade of AASHTO M314 anchor bolts may be used in lieu of ASTM F1554.  
Anchor bolts for side retainers may be cast in place or installed in holes drilled before or after members are in place.  
Drilled and set anchor bolts shall be installed according to Article 521.06 of the Standard Specifications.

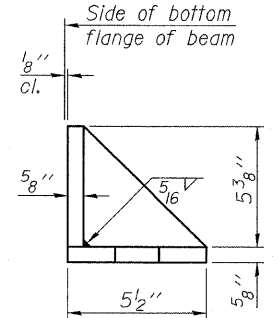
Pour diaphragm flush with bott. of slab. Concrete in slab above this line shall be placed not less than 45 min. nor more than 90 min. after diaphragm has been poured.

Roofing felt shall be bonded to side of beam embedded into diaphragm.



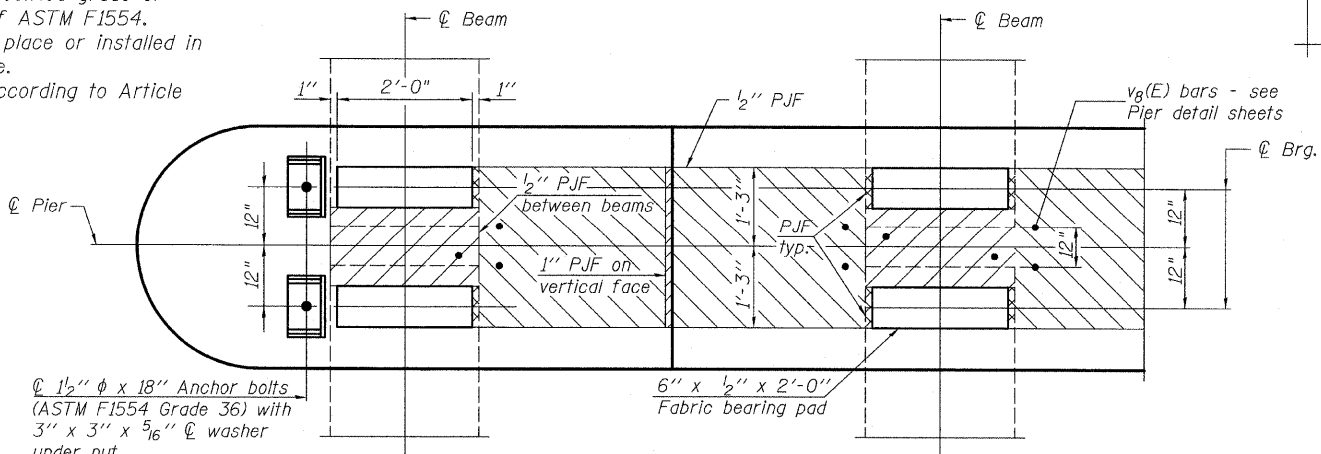
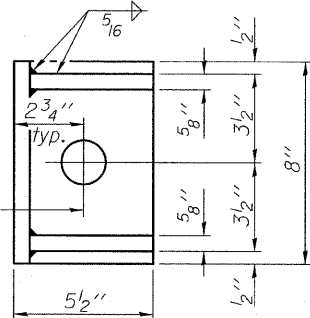
**SECTION B-B**

Dimensions along C of beam, except as shown.  
\* Tightly fasten the #8 bars together with No. 9 wire ties.



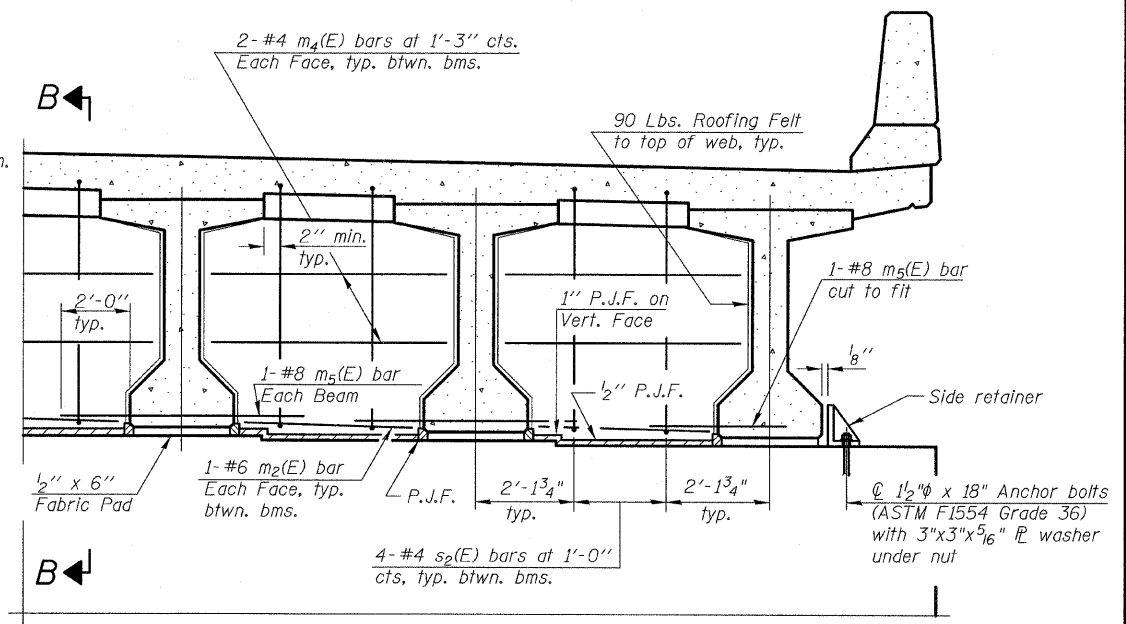
**SIDE RETAINER**

(2 required each side of pier).  
Equivalent rolled angle with stiffeners will be allowed in lieu of welded plates.

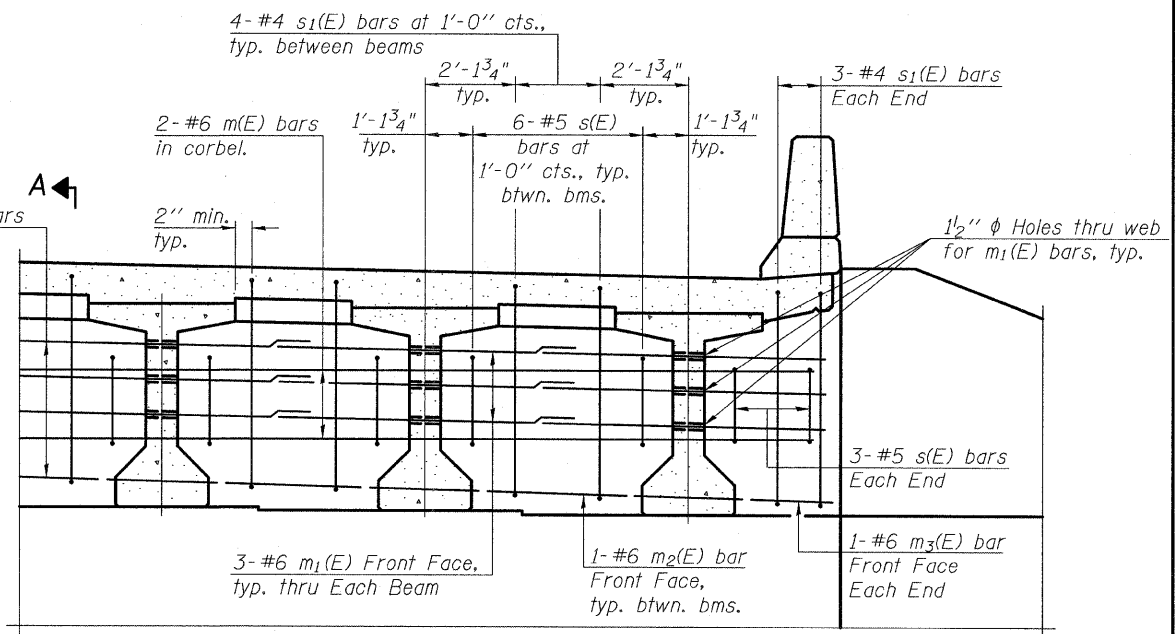


**PLAN AT PIER**

(Showing bearing pad and P.J.F. details)



**DIAPHRAGM AT PIER**



**DIAPHRAGM ELEVATION AT ABUTMENT**

**MIN. BAR LAP**  
#6 bar = 2'-9"

DESIGNED	IM
CHECKED	PDF
DRAWN	IM
CHECKED	PDF

**SUPERSTRUCTURE DETAILS II**  
**STRUCTURE NO. 006-0174 (EB)**  
**STRUCTURE NO. 006-0175 (WB)**

SHEET NO. 13 39 SHEETS	F.A. RTE. 80	SECTION *	COUNTY BUREAU	TOTAL SHEETS 344	SHEET NO. 21
	FED. ROAD DIST. NO. ILLINOIS FED. AID PROJECT			CONTRACT NO. 66908	

TYLIN INTERNATIONAL