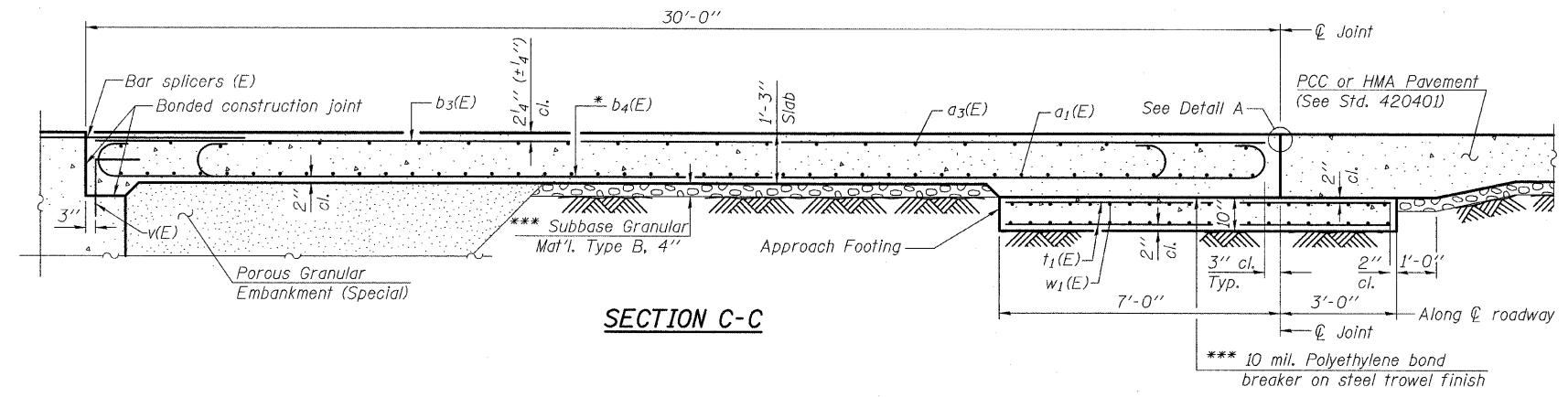
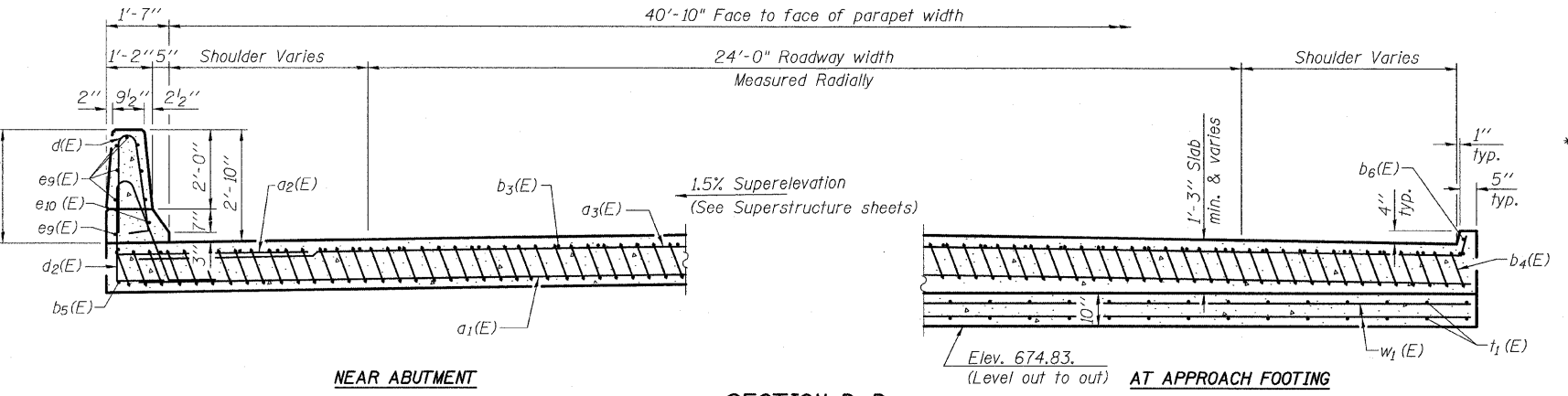


STATE OF ILLINOIS  
DEPARTMENT OF TRANSPORTATION



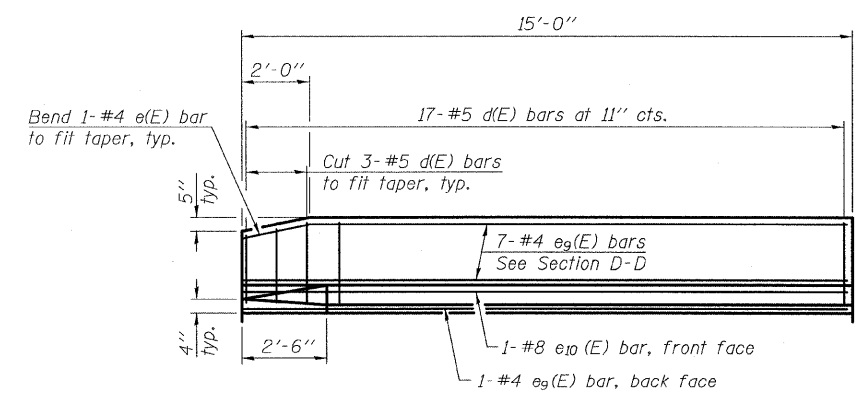
SECTION C-C



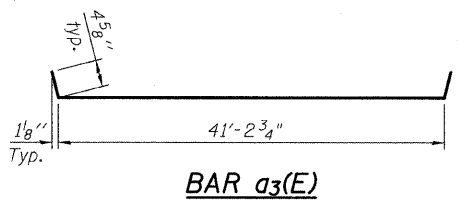
NEAR ABUTMENT

SECTION D-D

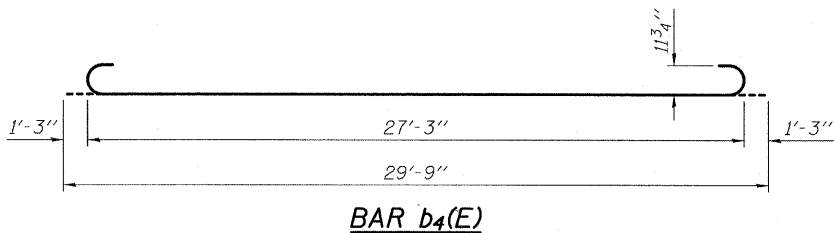
(See Plan for dimensions not shown)



VIEW E-E

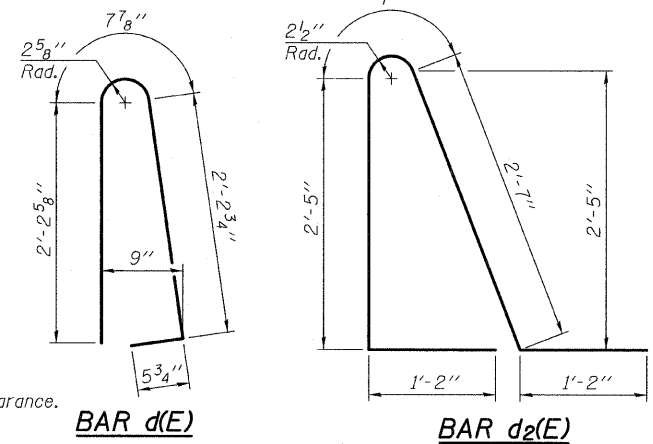


BAR a3(E)



BAR b4(E)

Notes:  
See sheet 16 of 39 for Detail A and View B-B.  
Approach slab and parapet concrete shall be paid for as Concrete Superstructure.  
Approach footing concrete shall be paid for as Concrete Structures.  
Reinforcement shall be paid for as Reinforcement Bars, Epoxy Coated.  
For v(E) bar details, see sheet 13 of 39.  
The approach footing maximum applied service bearing pressure (Qmax) = 2.0 ksf.  
For bar splicer details, see sheet 32 of 39.  
Cost of excavation for approach footing included with Concrete Structures.  
For Porous Granular Embankment (Special) and drainage treatment details, see sheet 2 of 39.



BAR d(E)

BAR d2(E)

\* Tilt #9 b4(E) bars as required to maintain clearance.  
\*\*\* Cost included with Concrete Superstructure.

TWO APPROACHES  
BILL OF MATERIAL

(Each Bridge - 2 Thus)

Bar	No.	Size	Length	Shape
a3(E)	50	#4	42'-0"	—
a1(E)	92	#5	42'-4"	—
a2(E)	48	#6	6'-0"	—
b3(E)	68	#4	29'-8"	—
b4(E)	202	#9	29'-9"	—
b5(E)	4	#4	14'-8"	—
b6(E)	4	#4	14'-8"	—
d(E)	68	#5	5'-7"	⤴
d2(E)	68	#5	7'-11"	⤴
e9(E)	32	#4	14'-8"	—
e10(E)	4	#8	14'-8"	—
t1(E)	172	#4	9'-8"	—
w1(E)	80	#5	42'-4"	—
			Cu. Yd.	128.9
Concrete Superstructure			Cu. Yd.	26.4
Concrete Structures			Pound	38080
Reinforcement Bars, Epoxy Coated				

(1) 4,650 pounds of total weight is considered Reinforcement Bars, Epoxy Coated for the Substructure.

BRIDGE APPROACH SLAB DETAILS  
(SHEET 2 OF 2)  
STRUCTURE NO. 006-0174 (EB)  
STRUCTURE NO. 006-0175 (WB)

DESIGNED	IM
CHECKED	PDF
DRAWN	IM
CHECKED	PDF

SHEET NO. 17 39 SHEETS	F.A. RTE. 80	SECTION *	COUNTY BUREAU	TOTAL SHEETS 344	SHEET NO. 215
	CONTRACT NO. 66908				
FED. ROAD DIST. NO.		ILLINOIS FED. AID PROJECT			

TYLIN INTERNATIONAL