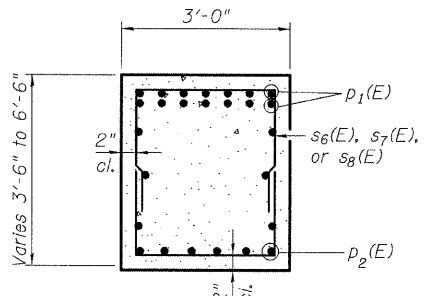


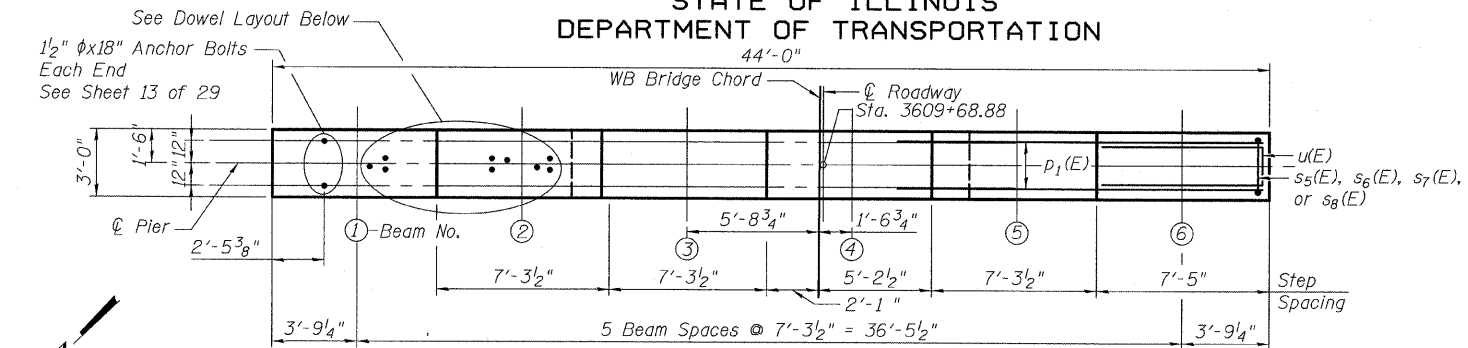
STATE OF ILLINOIS
DEPARTMENT OF TRANSPORTATION

BILL OF MATERIAL

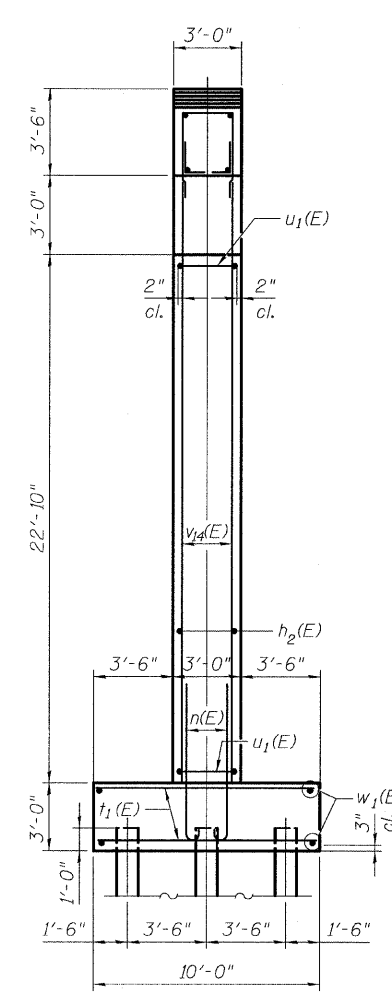
Bar	No.	Size	Length	Shape
$h_1(E)$	4	#5	21'-8"	—
$h_2(E)$	50	#5	17'-2"	—
$h_3(E)$	6	#5	43'-8"	—
$h_4(E)$	6	#5	35'-2"	—
$n(E)$	80	#8	8'-6"	—
$p_1(E)$	14	#10	43'-8"	—
$p_2(E)$	12	#7	16'-4"	—
$s_3(E)$	23	#5	6'-8"	□
$s_5(E)$	27	#5	11'-8"	□
$s_6(E)$	36	#5	11'-0"	□
$s_7(E)$	36	#5	10'-0"	□
$s_8(E)$	36	#5	9'-0"	□
$t_1(E)$	70	#8	9'-8"	—
$u(E)$	6	#6	9'-10"	—
$u_1(E)$	48	#5	14'-4"	—
$v_8(E)$	30	#8	4'-2"	—
$v_{13}(E)$	54	#8	26'-10"	—
$v_{14}(E)$	26	#8	27'-0"	—
$w_1(E)$	20	#8	34'-2"	—
Reinforcement Bars, Epoxy Coated		POUND	18460	
Structure Excavation		CU YD	189	
Concrete Structures		CU YD	117.1	
Furnishing Steel Piles HP14x73		Foot	1,189	
Driving Piles		Foot	1,189	
Test Pile Steel HP14x73		Each	1	



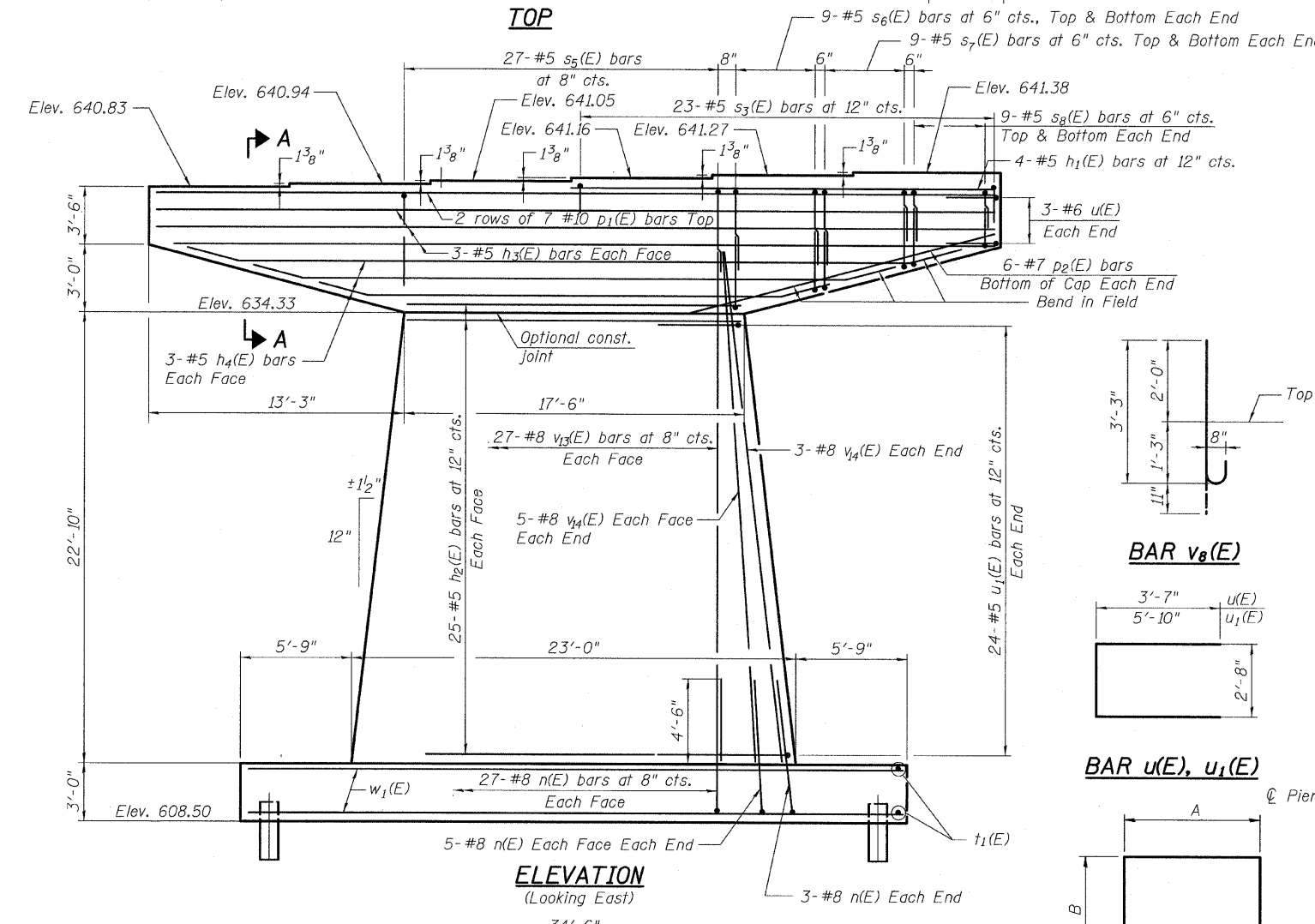
SECTION A-A



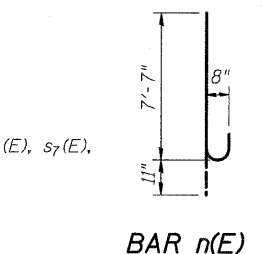
TOP



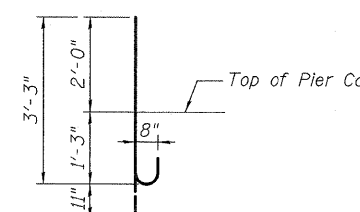
END VIEW



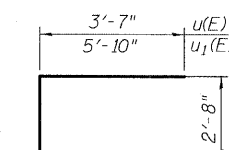
ELEVATION
(Looking East)



BAR n(E)



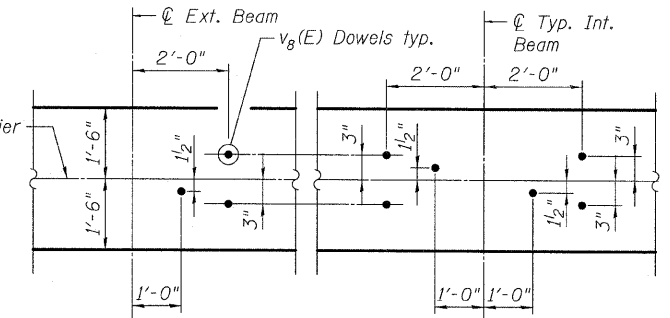
BAR v8(E)



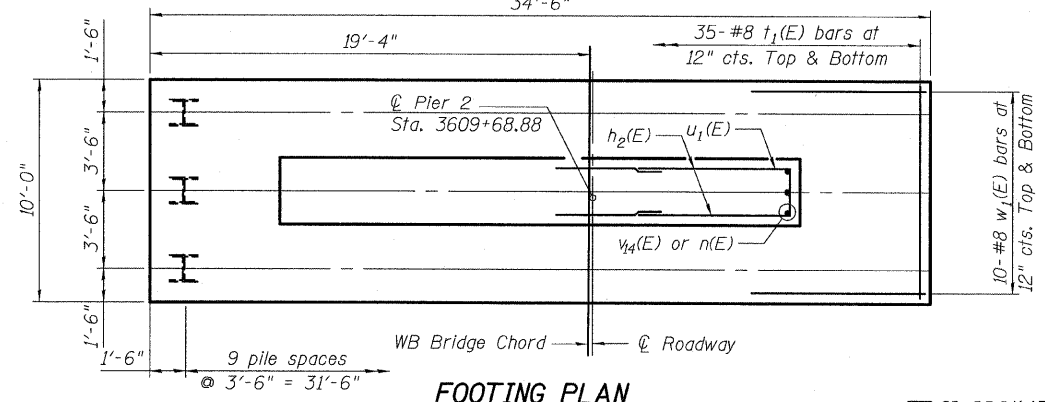
BAR u(E), u1(E)

BARS s3(E), s5(E) THRU s8(E)
A & B DIMENSIONS

Bar	A	B
$s_3(E)$	2'-8"	2'-0"
$s_5(E)$	2'-8"	4'-6"
$s_6(E)$	2'-8"	4'-2"
$s_7(E)$	2'-8"	3'-8"
$s_8(E)$	2'-8"	3'-2"



DOWEL LAYOUT



FOOTING PLAN

NOTES:

- Space reinforcement in cap to miss anchor bolts.
- Pour steps monolithically with cap.
- For details of piles, see sheet 32 of 39.

PILE DATA

Type: HP 14x73
Nominal Required Bearing: 270 kips
Allowable Resistance Available: 90 kips
Est. Length: 41'
No. Production Piles: 29 Piles
No. Test Piles: 1 Pile

DESIGNED AD
CHECKED PDF
DRAWN IM
CHECKED PDF

SHEET NO. 31	F.A. RTE. 80	SECTION *	COUNTY BUREAU	TOTAL SHEETS 344	SHEET NO. 229
39 SHEETS			CONTRACT NO. 66908		
FED. ROAD DIST. NO. ILLINOIS FED. AID PROJECT					

TYLIN INTERNATIONAL