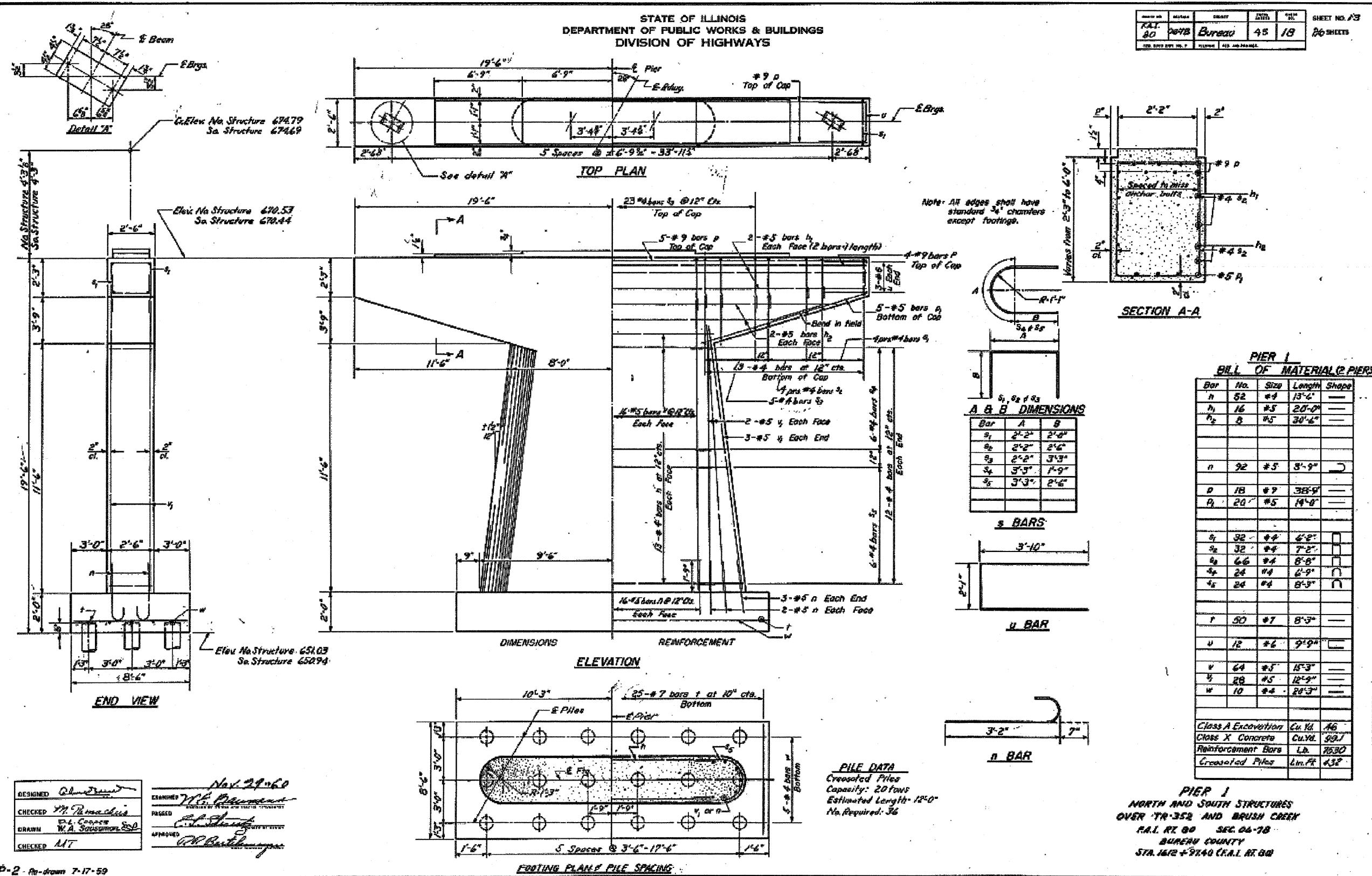


STATE OF ILLINOIS
DEPARTMENT OF PUBLIC WORKS & BUILDINGS
DIVISION OF HIGHWAYS

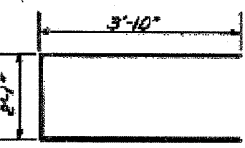
PROJECT NO.	DATE	DRAWN	DATE	SCALE	SHEET NO. OF
RAI 80	0478	Bureau	45	18	26 SHEETS



A & B DIMENSIONS

Bar	A	B
s ₁	2'-2"	2'-0"
s ₂	2'-2"	2'-4"
s ₃	2'-2"	3'-3"
s ₄	3'-3"	1'-9"
s ₅	3'-3"	2'-6"

s BARS



u BAR



n BAR

PIER 1
BILL OF MATERIAL @ PIERS

Bar No.	Size	Length	Shape
n	#2	13'-6"	—
h ₁	#5	20'-0"	—
h ₂	#5	30'-6"	—
n	#5	3'-9"	—
p	#7	38'-9"	—
p ₁	#5	14'-0"	—
s ₁	#4	6'-2"	—
s ₂	#4	7'-2"	—
s ₃	#4	8'-8"	—
s ₄	#4	6'-9"	—
s ₅	#4	8'-5"	—
r	#7	8'-3"	—
u	#6	9'-9"	—
v	#5	15'-3"	—
y	#5	12'-9"	—
w	#4	20'-3"	—

Class A Excavation	Cu. Yd.	16
Class X Concrete	Cu. Yd.	89.1
Reinforcement Bars	Lb.	7830
Crested Piles	Lin. Ft.	432

PILE DATA
Crested Piles
Capacity: 20 tons
Estimated Length: 12'-0"
No. Required: 36

PIER 1
NORTH AND SOUTH STRUCTURES
OVER TR-352 AND BRUSH CREEK
RAI. RT. 80 SEC. 04-78
BUREAU COUNTY
STA. 1612 + 9140 (RAI. RT. 80)

DESIGNED: *Albert...*
CHECKED: *M. R...*
DRAWN: *D.L. Cooney*
CHECKED: *MT*

EXAMINED: *W.H. P...*
PASSED: *E.L. S...*
APPROVED: *W.D. B...*

Nov. 29, 1960

P-2 - Re-drawn 7-17-59