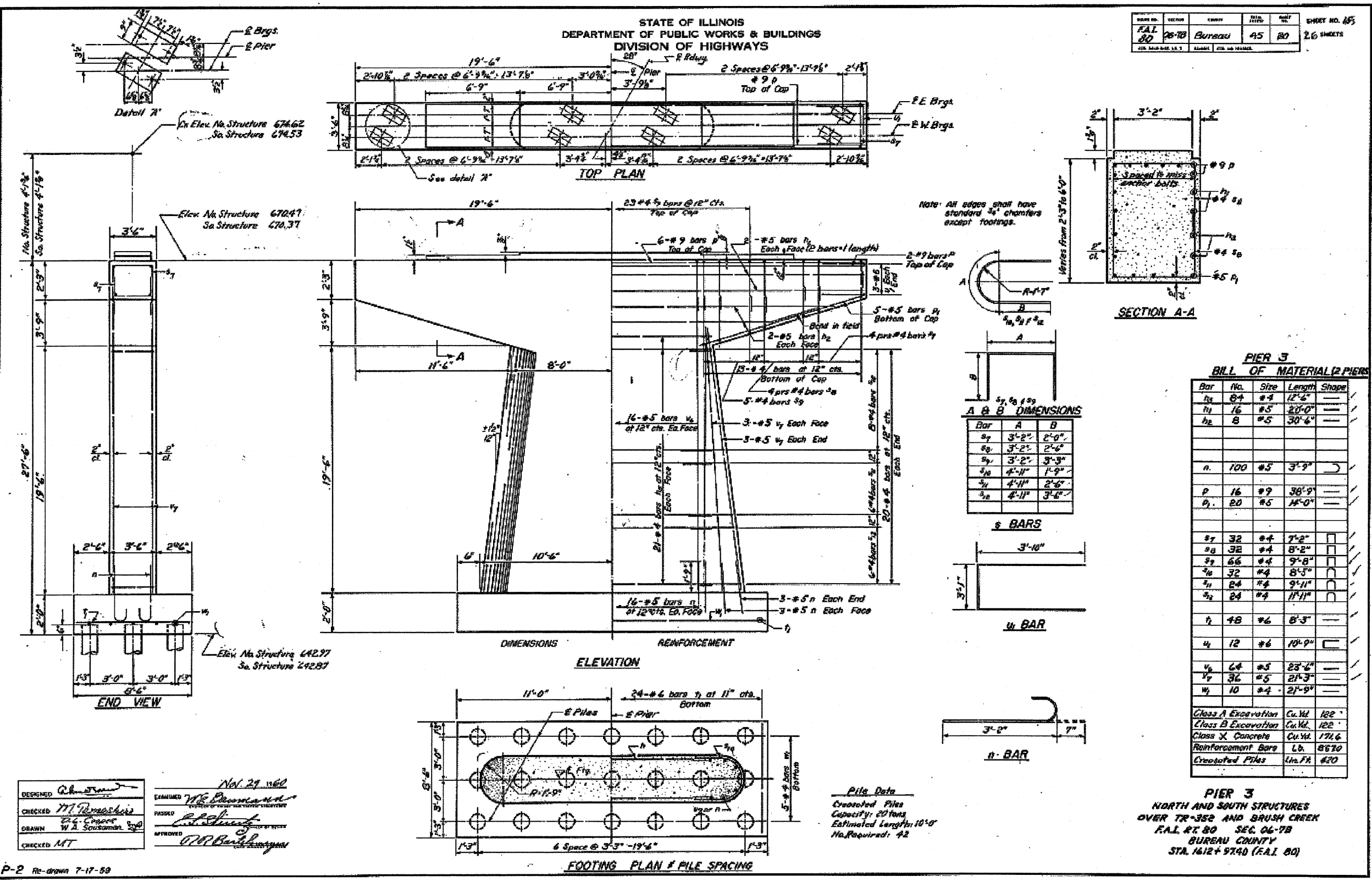


STATE OF ILLINOIS
DEPARTMENT OF PUBLIC WORKS & BUILDINGS
DIVISION OF HIGHWAYS

ROUTE NO.	SECTION	COUNTY	MILE POSTS	SHEET NO.	SHEET NO. 185 2.6 SHEETS
F.A.I. 82	26-7B	Bureau	45	80	

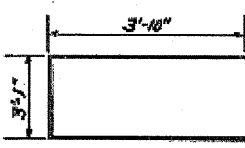


Note: All edges shall have standard 1/4" chamfers except footings.

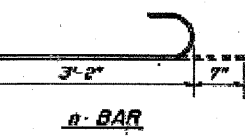
A B B DIMENSIONS

Bar	A	B
#1	3'-2"	2'-0"
#2	3'-2"	2'-6"
#3	3'-2"	3'-3"
#4	4'-11"	1'-9"
#5	4'-11"	2'-6"
#6	4'-11"	3'-8"

s BARS



u BAR



n BAR

PIER 3
BILL OF MATERIAL (2 PIERS)

Bar	No.	Size	Length	Shape
h1	84	#4	12'-4"	—
h1	16	#5	20'-0"	—
h2	8	#5	30'-6"	—
n	100	#3	3'-9"	—
p	16	#9	38'-9"	—
q	20	#5	18'-0"	—
r	32	#4	7'-2"	□
s	32	#4	8'-2"	□
t	66	#4	9'-8"	□
u	32	#4	8'-5"	□
v	24	#4	9'-11"	□
w	24	#4	17'-11"	□
x	48	#6	8'-3"	—
y	12	#6	10'-9"	—
z	64	#3	23'-6"	—
aa	36	#5	21'-3"	—
ab	10	#4	27'-9"	—
Class A Excavation		Cu. Yd.	182'	
Class B Excavation		Cu. Yd.	122'	
Class X Concrete		Cu. Yd.	171.6	
Reinforcement Bars		Lb.	8630	
Crested Piles		Lin. Ft.	620	

Pile Data
Crested Piles
Capacity: 20 Tons
Estimated Length: 10'-0"
No. Required: 42

PIER 3
NORTH AND SOUTH STRUCTURES
OVER TR-352 AND BRUSH CREEK
F.A.I. RT 80 SEC. 06-7B
BUREAU COUNTY
STA. 1612+9740 (F.A.I. 80)

DESIGNED: *[Signature]*
CHECKED: *[Signature]*
DRAWN: *[Signature]*
CHECKED: *[Signature]*

NOV. 29 1960
EXAMINED: *[Signature]*
PASSED: *[Signature]*
APPROVED: *[Signature]*

P-2 re-drawn 7-17-59

**06-7BR&BR-1.7VB-M.6BR&6.7 RS-1 & I