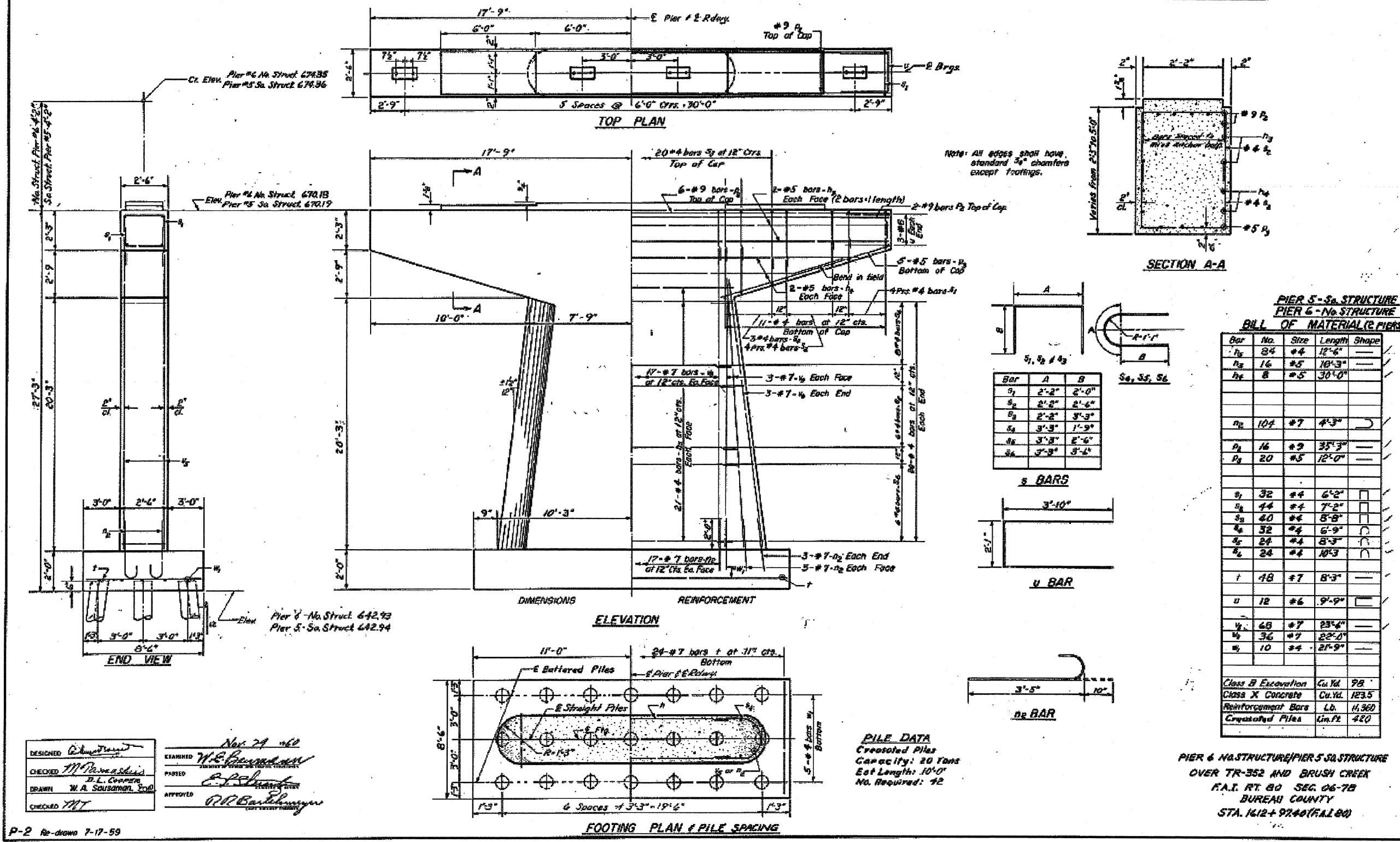


STATE OF ILLINOIS
DEPARTMENT OF PUBLIC WORKS & BUILDINGS
DIVISION OF HIGHWAYS

PROJECT NO.	SECTION	SHEET NO.	TOTAL SHEETS
F.A.I. RT 80	06-7B	45	22
BUREAU		26 SHEETS	



DESIGNED: *Robert Brown*
CHECKED: *M. J. ...*
DRAWN: *W. A. ...*
CHECKED: *MT*

ESTABLISHED: *Nov 24 '60*
APPROVED: *R. B. ...*

P-2 Re-drawn 7-17-59