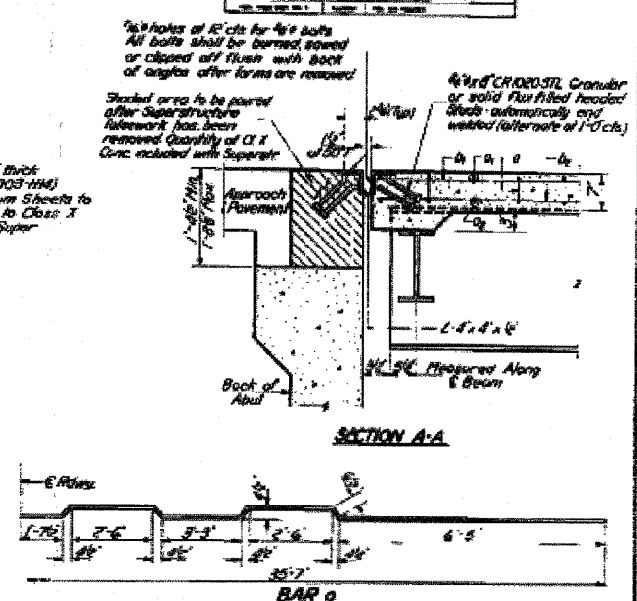
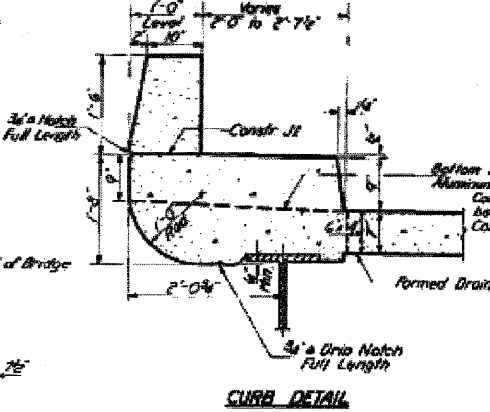
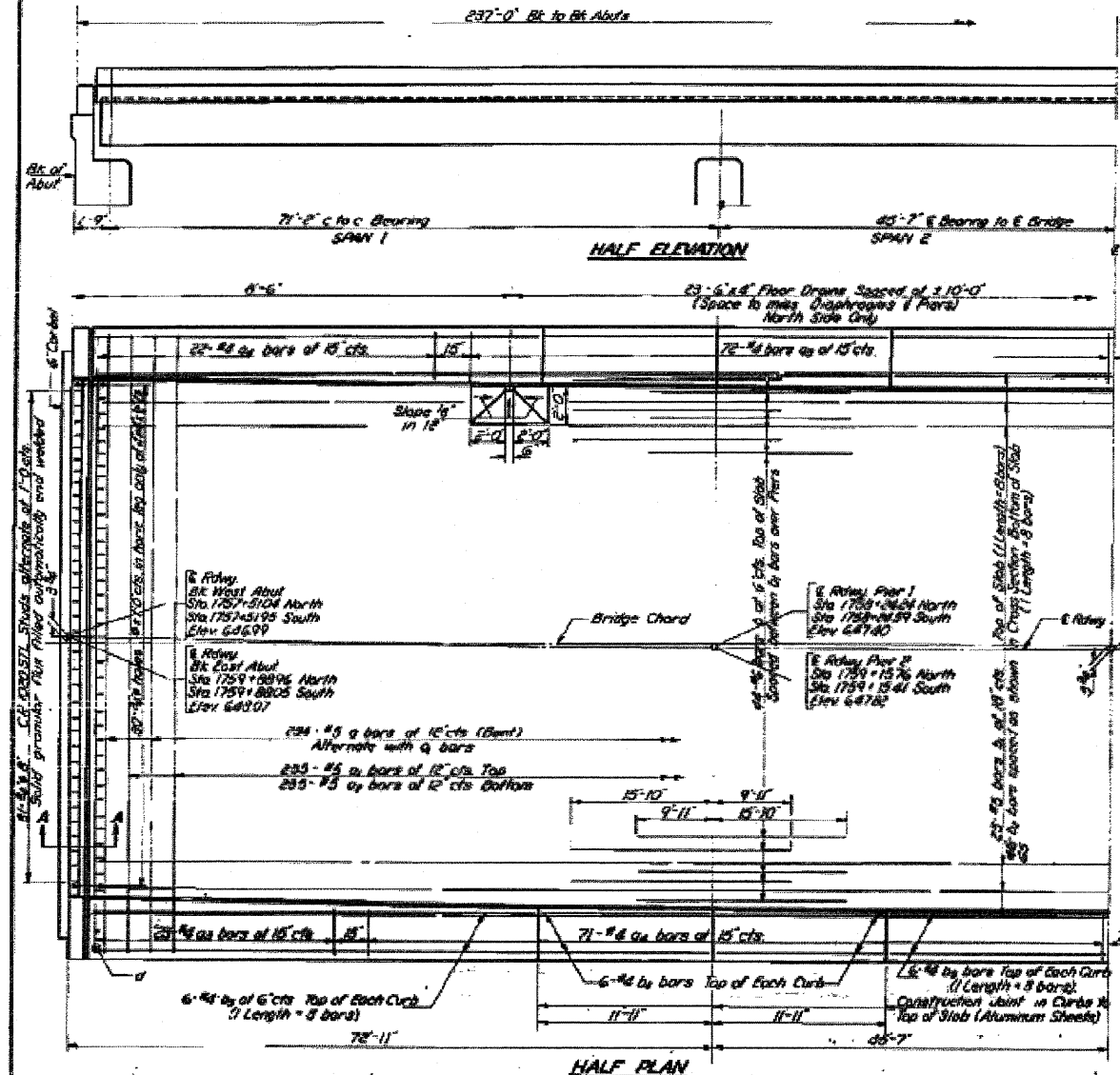


STATE OF ILLINOIS  
DEPARTMENT OF PUBLIC WORKS & BUILDINGS  
DIVISION OF HIGHWAYS

DESIGN NO.	PROJECT	SECTION	SHEET NO.	TOTAL SHEETS
758-70	BUREAU	6-7	5	13

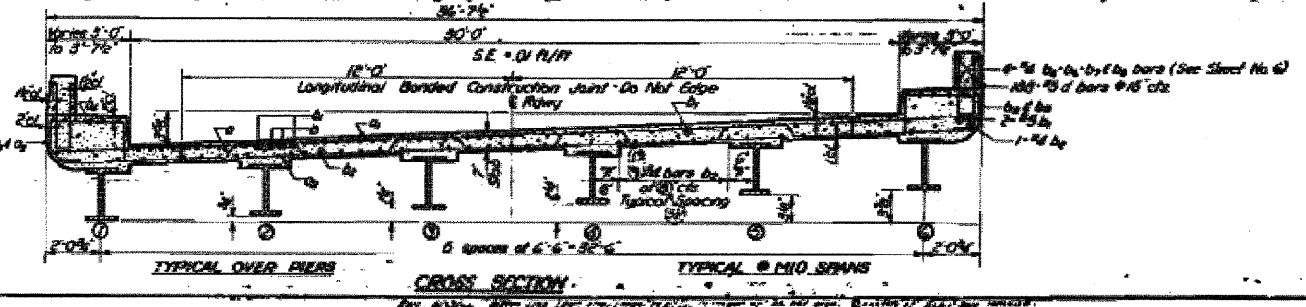


**BILL OF MATERIAL (2 BRIDGES)**

Bar No.	Size	Length	Shape
1	2 1/2"	15'	3/4"
2	2 1/2"	15'	3/4"
3	2 1/2"	15'	3/4"
4	2 1/2"	15'	3/4"
5	2 1/2"	15'	3/4"
6	2 1/2"	15'	3/4"
7	2 1/2"	15'	3/4"
8	2 1/2"	15'	3/4"
9	2 1/2"	15'	3/4"
10	2 1/2"	15'	3/4"
11	2 1/2"	15'	3/4"
12	2 1/2"	15'	3/4"
13	2 1/2"	15'	3/4"
14	2 1/2"	15'	3/4"
15	2 1/2"	15'	3/4"
16	2 1/2"	15'	3/4"
17	2 1/2"	15'	3/4"
18	2 1/2"	15'	3/4"
19	2 1/2"	15'	3/4"
20	2 1/2"	15'	3/4"
21	2 1/2"	15'	3/4"
22	2 1/2"	15'	3/4"
23	2 1/2"	15'	3/4"
24	2 1/2"	15'	3/4"
25	2 1/2"	15'	3/4"
26	2 1/2"	15'	3/4"
27	2 1/2"	15'	3/4"
28	2 1/2"	15'	3/4"
29	2 1/2"	15'	3/4"
30	2 1/2"	15'	3/4"
31	2 1/2"	15'	3/4"
32	2 1/2"	15'	3/4"
33	2 1/2"	15'	3/4"
34	2 1/2"	15'	3/4"
35	2 1/2"	15'	3/4"
36	2 1/2"	15'	3/4"
37	2 1/2"	15'	3/4"
38	2 1/2"	15'	3/4"
39	2 1/2"	15'	3/4"
40	2 1/2"	15'	3/4"
41	2 1/2"	15'	3/4"
42	2 1/2"	15'	3/4"
43	2 1/2"	15'	3/4"
44	2 1/2"	15'	3/4"
45	2 1/2"	15'	3/4"
46	2 1/2"	15'	3/4"
47	2 1/2"	15'	3/4"
48	2 1/2"	15'	3/4"
49	2 1/2"	15'	3/4"
50	2 1/2"	15'	3/4"
51	2 1/2"	15'	3/4"
52	2 1/2"	15'	3/4"
53	2 1/2"	15'	3/4"
54	2 1/2"	15'	3/4"
55	2 1/2"	15'	3/4"
56	2 1/2"	15'	3/4"
57	2 1/2"	15'	3/4"
58	2 1/2"	15'	3/4"
59	2 1/2"	15'	3/4"
60	2 1/2"	15'	3/4"
61	2 1/2"	15'	3/4"
62	2 1/2"	15'	3/4"
63	2 1/2"	15'	3/4"
64	2 1/2"	15'	3/4"
65	2 1/2"	15'	3/4"
66	2 1/2"	15'	3/4"
67	2 1/2"	15'	3/4"
68	2 1/2"	15'	3/4"
69	2 1/2"	15'	3/4"
70	2 1/2"	15'	3/4"
71	2 1/2"	15'	3/4"
72	2 1/2"	15'	3/4"
73	2 1/2"	15'	3/4"
74	2 1/2"	15'	3/4"
75	2 1/2"	15'	3/4"
76	2 1/2"	15'	3/4"
77	2 1/2"	15'	3/4"
78	2 1/2"	15'	3/4"
79	2 1/2"	15'	3/4"
80	2 1/2"	15'	3/4"
81	2 1/2"	15'	3/4"
82	2 1/2"	15'	3/4"
83	2 1/2"	15'	3/4"
84	2 1/2"	15'	3/4"
85	2 1/2"	15'	3/4"
86	2 1/2"	15'	3/4"
87	2 1/2"	15'	3/4"
88	2 1/2"	15'	3/4"
89	2 1/2"	15'	3/4"
90	2 1/2"	15'	3/4"
91	2 1/2"	15'	3/4"
92	2 1/2"	15'	3/4"
93	2 1/2"	15'	3/4"
94	2 1/2"	15'	3/4"
95	2 1/2"	15'	3/4"
96	2 1/2"	15'	3/4"
97	2 1/2"	15'	3/4"
98	2 1/2"	15'	3/4"
99	2 1/2"	15'	3/4"
100	2 1/2"	15'	3/4"

**METHOD OF DETERMINING FILLET HEIGHT 'Y'**  
After all Structural Steel has been erected elevations of the top flanges of the beams shall be taken at intervals not to exceed 10 ft. Subtract these elevations from the elevations top of slab corrected for dead load deflections. This difference minus the slab thickness equals the fillet height above top of beam.

DESIGNED	James M. Parnell	DATE	Nov. 2 1964
CHECKED	W. H. Parnell		
DRAWN	J. L. Armstrong		
CHECKED	W. H. Parnell		



**SUPERSTRUCTURE  
BRIDGE OVER NEGRO CREEK  
F.A.I.R.D. SEC. 6-7(B).F-1  
BUREAU COUNTY  
STA. 1758+70.**