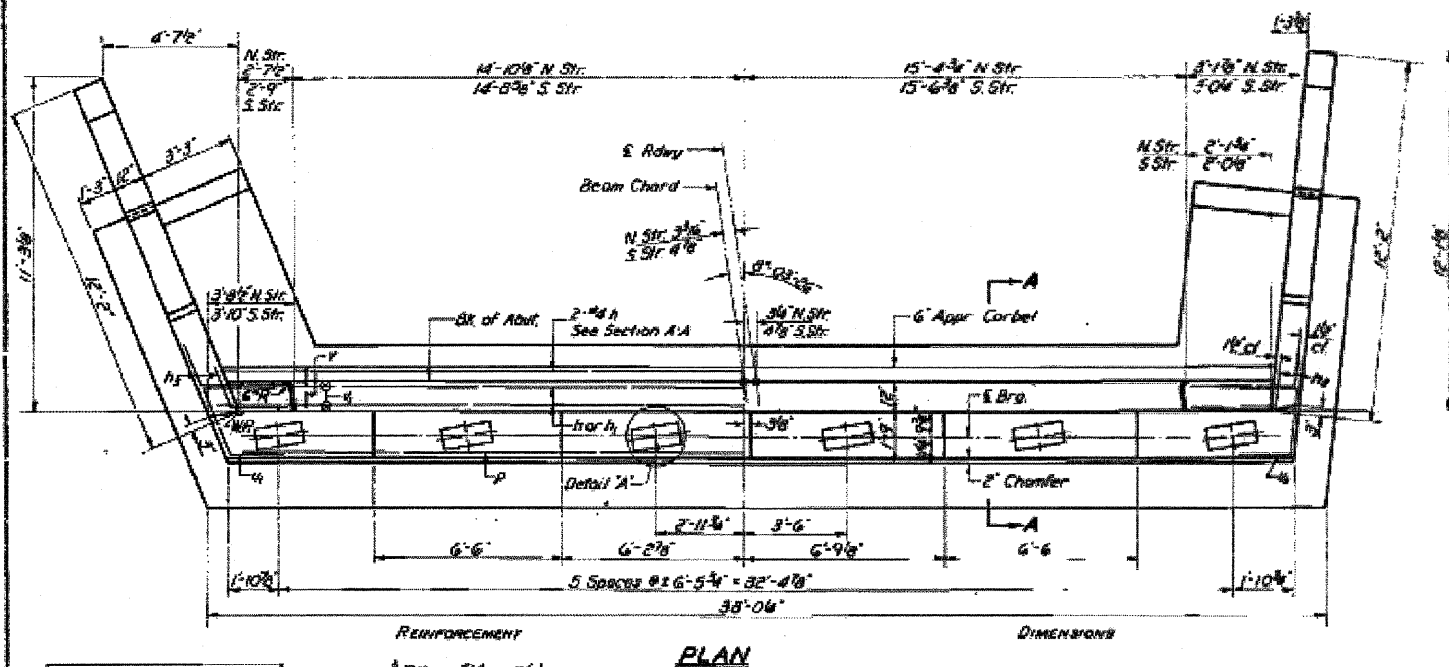
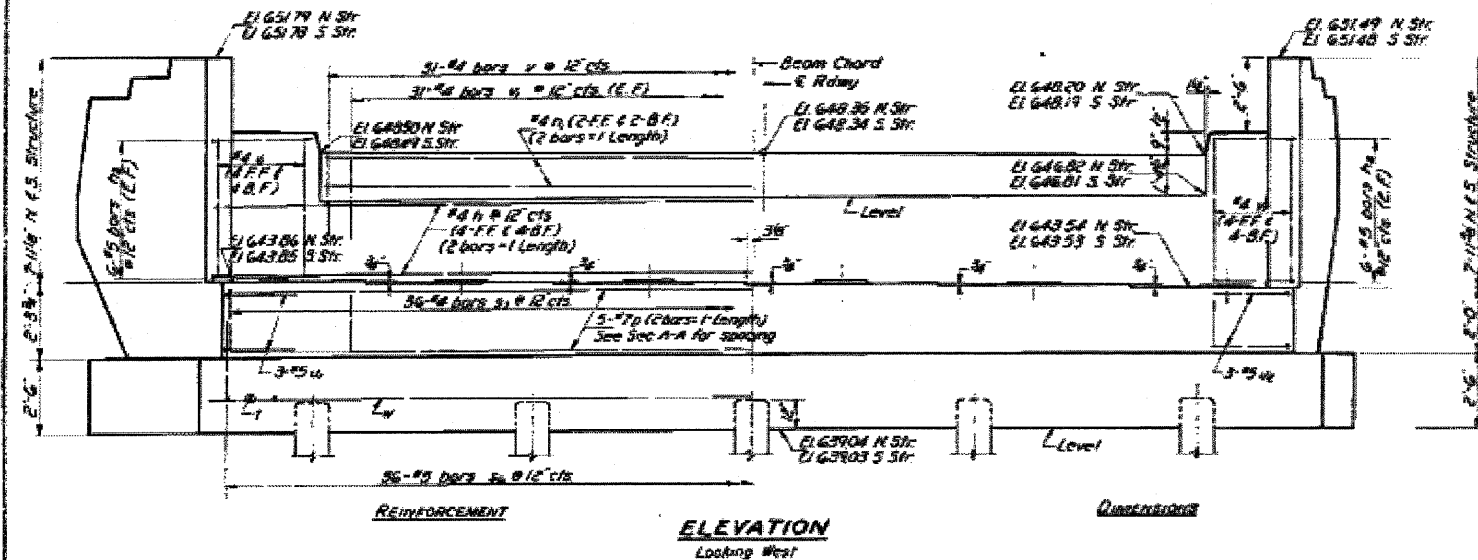


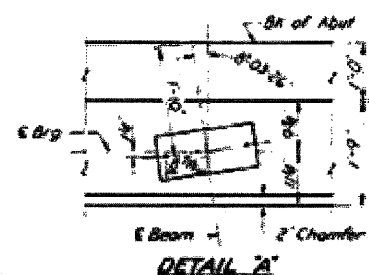
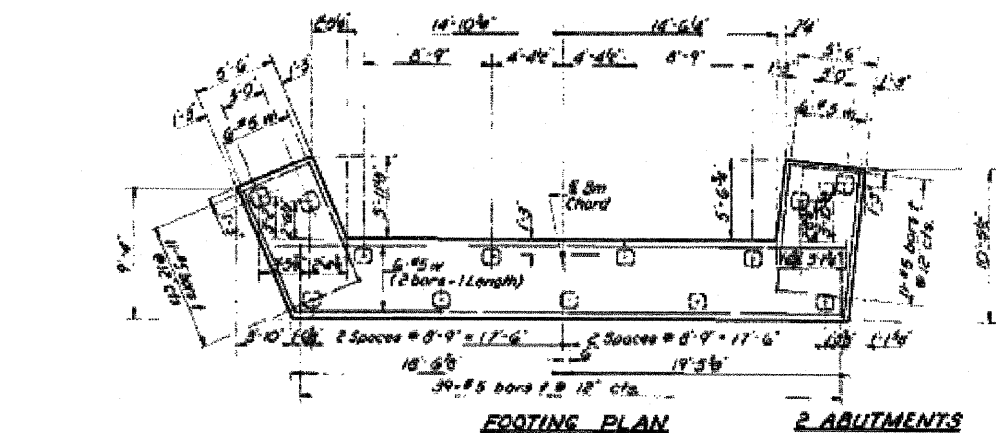
STATE OF ILLINOIS
DEPARTMENT OF PUBLIC WORKS & BUILDINGS
DIVISION OF HIGHWAYS

DATE	BY	CHKD	APP'D	SHEET NO.
11-80	06-7VB	BUREAU	43	21
PROJECT NO.				5 SHEETS



DESIGNED	APR 24 1961
CHECKED	
DRAWN	
CHECKED	
APPROVED	

Note: For details of road post road see Sec. A-A see Sheet #7.



2 ABUTMENTS BAR LIST

Bar	No.	Size	Length	Shape
A	40	#4	19'-0"	—
A ₁	16	#4	15'-6"	—
A ₂	24	#5	6'-0"	—
A ₃	24	#5	5'-0"	—
A	20	#7	19'-6"	—
A ₄	72	#5	8'-6"	—
A ₅	72	#4	6'-2"	—
A	122	#5	5'-3"	—
A ₆	6	#5	5'-8"	—
A ₇	6	#5	5'-6"	—
A	62	#4	2'-9"	—
A	156	#4	6'-3"	—
A	24	#5	19'-0"	—
A	24	#5	9'-6"	—

2 ABUTMENTS BILL OF MATERIAL

Item	Unit	Quantity
Class X Concrete	Cu Yds	69.6
Reinforcement Bars	Lbs.	6320
Concrete Piles	Lin Ft	1850
Test Piles (Concrete)	Each	1

Note: Bill of Material includes Class X Concrete and Reinforcement Bars for End Posts.

BAR S₁ & U₁

PILE DATA
Type - Concrete Piles
Capacity - 50 Tons
Est. Length - 60'-0"
No. Reg'd - 25 + 1 Test Pile (N Structure)

W. ABUT. N. & S. STRUCTURES
F.A.I. RT. 80 SEC. 06-7VB
BUREAU COUNTY
STA. 1762+49.41

Revised 3-27-62.

FILE NAME =	USER NAME = braboggo	DESIGNED -	REVISED -
ca:\pwwork\pwwork\braboggo\0112648\d368	988-sht-details.DGN	DRAWN -	REVISED -
	PLOT SCALE = 56.0638' / IN.	CHECKED -	REVISED -
	PLOT DATE = Sep 07, 2009 - 01:37:42 PM	DATE -	REVISED -

STATE OF ILLINOIS
DEPARTMENT OF TRANSPORTATION

EXISTING BRIDGE PLANS (FOR INFORMATION ONLY)

SCALE: _____ SHEET NO. ___ OF ___ SHEETS STA. _____ TO STA. _____

F.A.I. RTE.	SECTION	COUNTY	TOTAL SHEETS	SHEET NO.
I-80	**	BUREAU	344	284
				66908

**06-7BR&BR-1.7VB-M.6BR&6.7 RS-1 & I

ILLINOIS FED. AID PROJECT