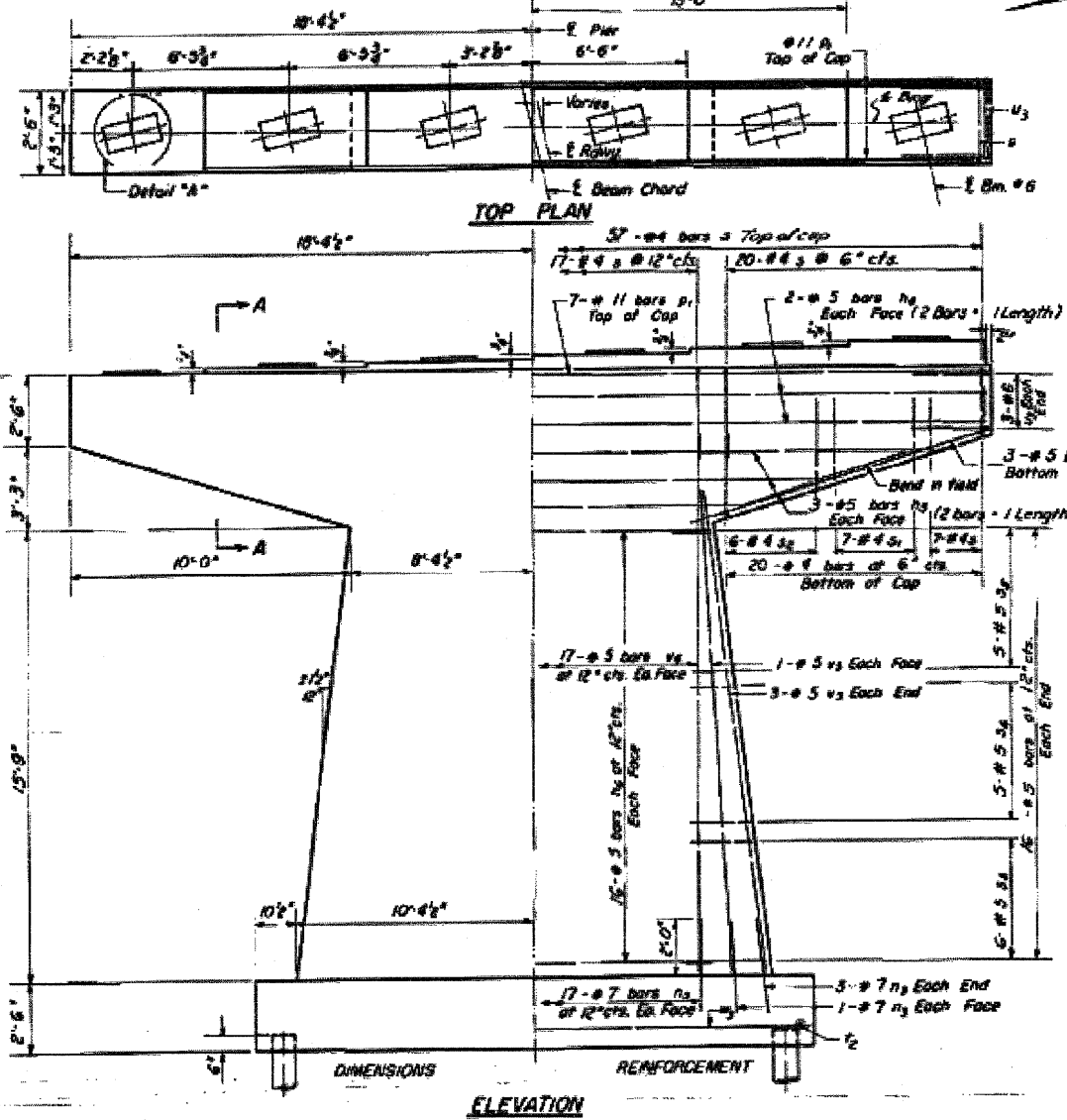
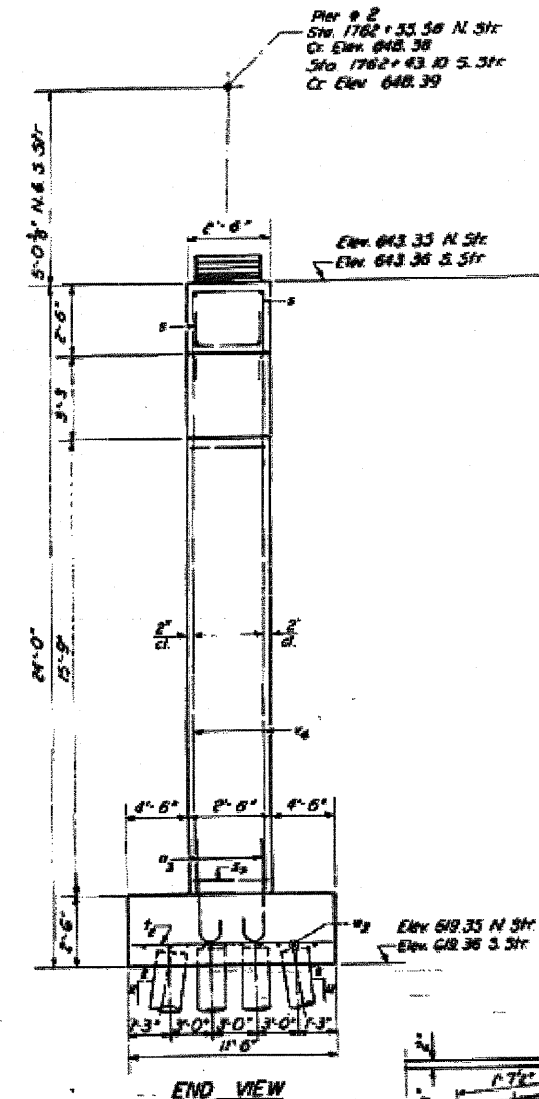


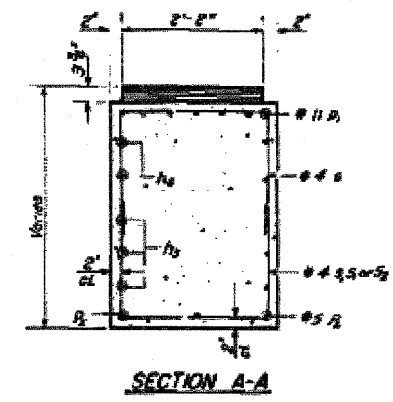
STATE OF ILLINOIS
DEPARTMENT OF PUBLIC WORKS & BUILDINGS
DIVISION OF HIGHWAYS

PROJECT NO.	DATE	BY	CHECKED	SCALE	SHEET NO.
10-770	10-25-59	BUREAU	43	25	18 SHEETS

PILE DATA
Type - Crossed Piles
Capacity - 20 Tons
Est. Length 23'-0"
No. Req'd. 18 + 1 Test Pile S.Str.



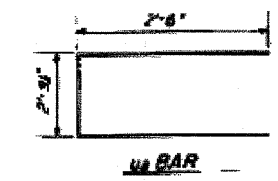
Note: All edges shall have standard 3/8" chamfers except footings.



A B B DIMENSIONS

Bar	A	B
1	2'-2"	2'-0"
2	2'-2"	3'-3"
3a	2'-2"	4'-3"
3b	2'-2"	3'-6"
3c	2'-2"	2'-0"
3d	2'-2"	2'-0"

1, 2, 3a, 3b, 3c, 3d BARS



**PIERS
BILL OF MATERIAL**

Bar No.	Size	Length	Shape
1a	# 5	19'-0"	—
1b	# 5	18'-0"	—
1c	# 5	18'-3"	—
1d	# 7	8'-9"	—
1e	# 11	38'-3"	—
1f	# 5	11'-6"	—
2	# 4	8'-2"	□
3a	# 4	8'-8"	□
3b	# 4	10'-8"	□
3c	# 5	8'-2"	□
3d	# 5	7'-6"	□
3e	# 5	6'-2"	□
4a	# 8	11'-3"	—
4b	# 6	7'-4"	□
4c	# 5	20'-3"	—
4d	# 5	17'-6"	—
4e	# 5	20'-3"	—
Class X Concrete Cu Yds 125.7			
Reinforcement Bars Lbs. 13710			
Concrete Pile Lbs. 4256			
Test Pile Timber Each 1			

**PIER #2 N & S STRUCTURES
E.I. RT. 60 SEC. 06-TVB
BUREAU COUNTY
STA. 1762 + 49.41**

DESIGNED: M. P. ...
CHECKED: ...
DRAWN: M. A. ...
CHECKED: ...
DATE: Dec 24 '61

P-2 Re-drawn 7-17-59 Rev. 11-25-59