

F.A.P. RTE.	SECTION	COUNTY	TOTAL SHEETS	SHEET NO.
796	(106)T	FORD	6	1
		ILLINOIS	CONTRACT NO. 66964	

STATE OF ILLINOIS
DEPARTMENT OF TRANSPORTATION
DIVISION OF HIGHWAYS

PROPOSED
HIGHWAY PLANS

FAP ROUTE 796 (IL 115)
SECTION (106)T

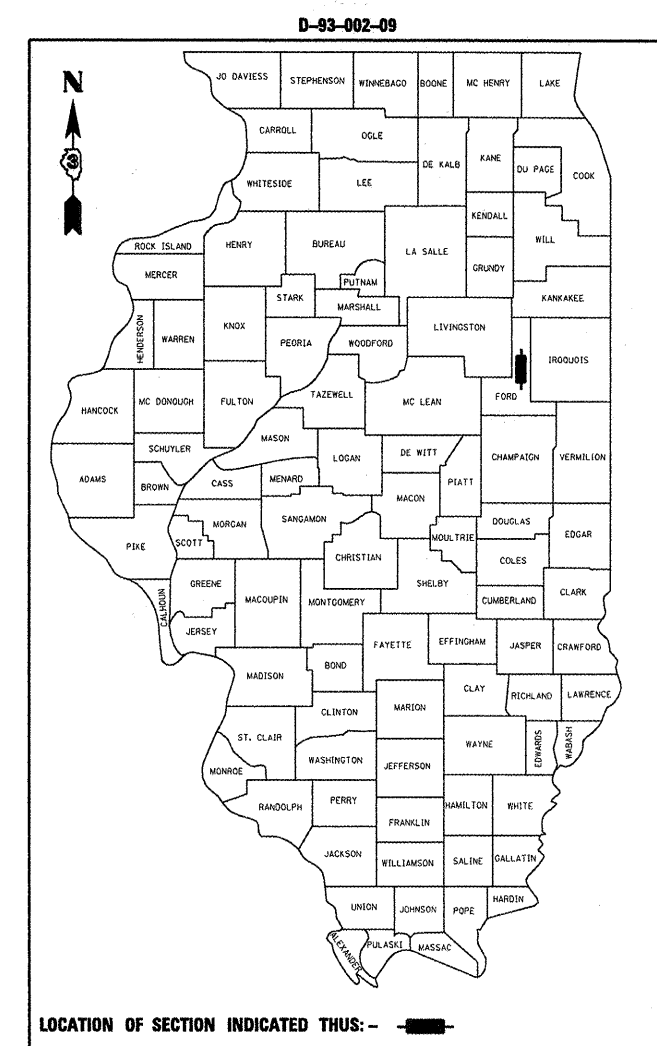
INTERMITTENT EROSION REPAIR
FORD COUNTY
C-93-097-09

INDEX OF SHEETS

1. COVER SHEET
2. GENERAL NOTES
3. SUMMARY OF QUANTITIES
4. TYPICAL
5. SCHEDULE
6. INTERMITTENT EROSION REPAIR

STANDARDS

- 000001-05 STANDARD SYMBOLS, ABBREVIATIONS AND PATTERNS
- 701001-02 OFF-ROAD OPERATIONS 2L, 2W, MORE THAN 15' (4.5 m) AWAY
- 701006-03 OFF-ROAD OPERATIONS 2L, 2W, 15' (4.5 m) TO 24" (600 mm) FROM PAVEMENT EDGE
- 701011-02 OFF-ROAD MOVING OPERATIONS 2L, 2W, DAY ONLY
- 701201-03 LANE CLOSURE, 2L, 2W, DAY ONLY, FOR SPEEDS ≥ 45 MPH
- 701301-03 LANE CLOSURE, 2L, 2W, SHORT TIME OPERATIONS
- 701901-01 TRAFFIC CONTROL DEVICES



FUNCTIONAL CLASSIFICATION
RURAL - MINOR ARTERIAL
FAP ROUTE 796 (IL 115)
2007 ADT 700
P.V 87.2% M.U. 5.7% S.U. 7.1%

STATE OF ILLINOIS
DEPARTMENT OF TRANSPORTATION
DIVISION OF HIGHWAYS

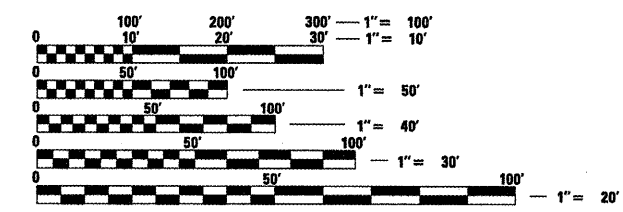
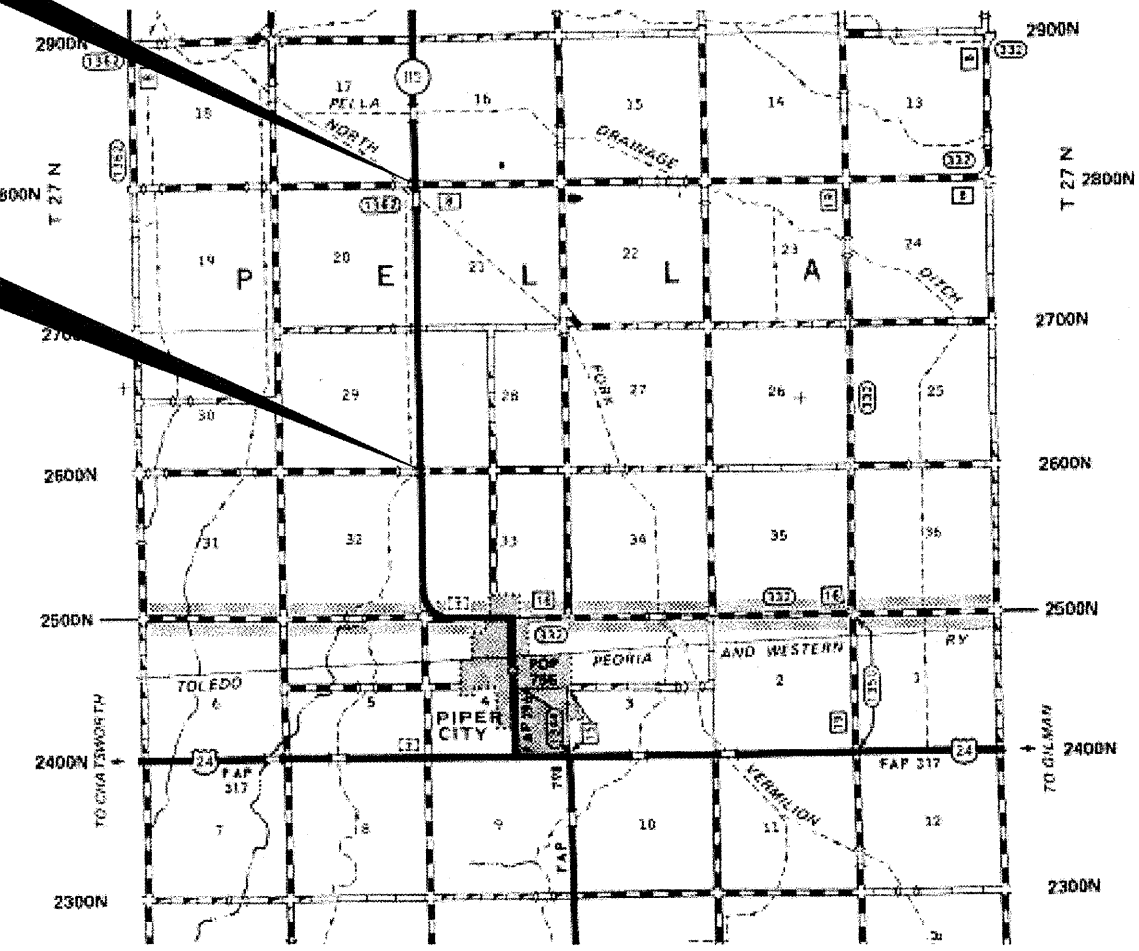
SUBMITTED 8/28 2009
George Ryan
DEPUTY DIRECTOR OF HIGHWAYS, REGION ENGINEER

October 2, 2009
Charles J. Ingersoll
ENGINEER OF DESIGN AND ENVIRONMENT

October 2, 2009
Christine M. Reed
DIRECTOR OF HIGHWAYS, CHIEF ENGINEER

PROJECT END
2800N ROAD (STA. 105+60 LT.)

PROJECT BEGIN
2600N ROAD (STA. 0+00 LT.)



FULL SIZE PLANS HAVE BEEN PREPARED USING STANDARD ENGINEERING SCALES. REDUCED SIZED PLANS WILL NOT CONFORM TO STANDARD SCALES. IN MAKING MEASUREMENTS ON REDUCED PLANS, THE ABOVE SCALES MAY BE USED.

J.U.L.I.E.
JOINT UTILITY LOCATION INFORMATION FOR EXCAVATION
1-800-892-0123
OR 811

PROJECT ENGINEER: JOE KANNEL
PROJECT MANAGER: RON WOODSHANK
TOWNSHIP: PELLA

CONTRACT NO. 66964

GROSS LENGTH = 10,560 FT. = 2.00 MILE
NET LENGTH = 2,039 FT. = 0.39 MILE

PRINTED BY THE AUTHORITY
OF THE STATE OF ILLINOIS