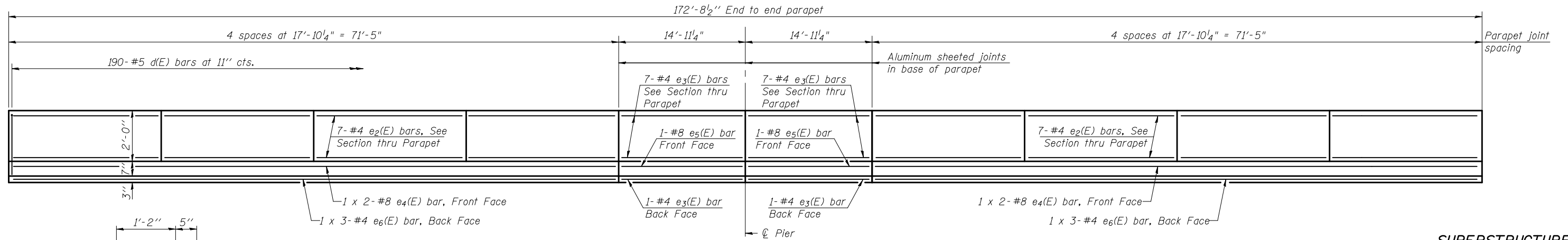
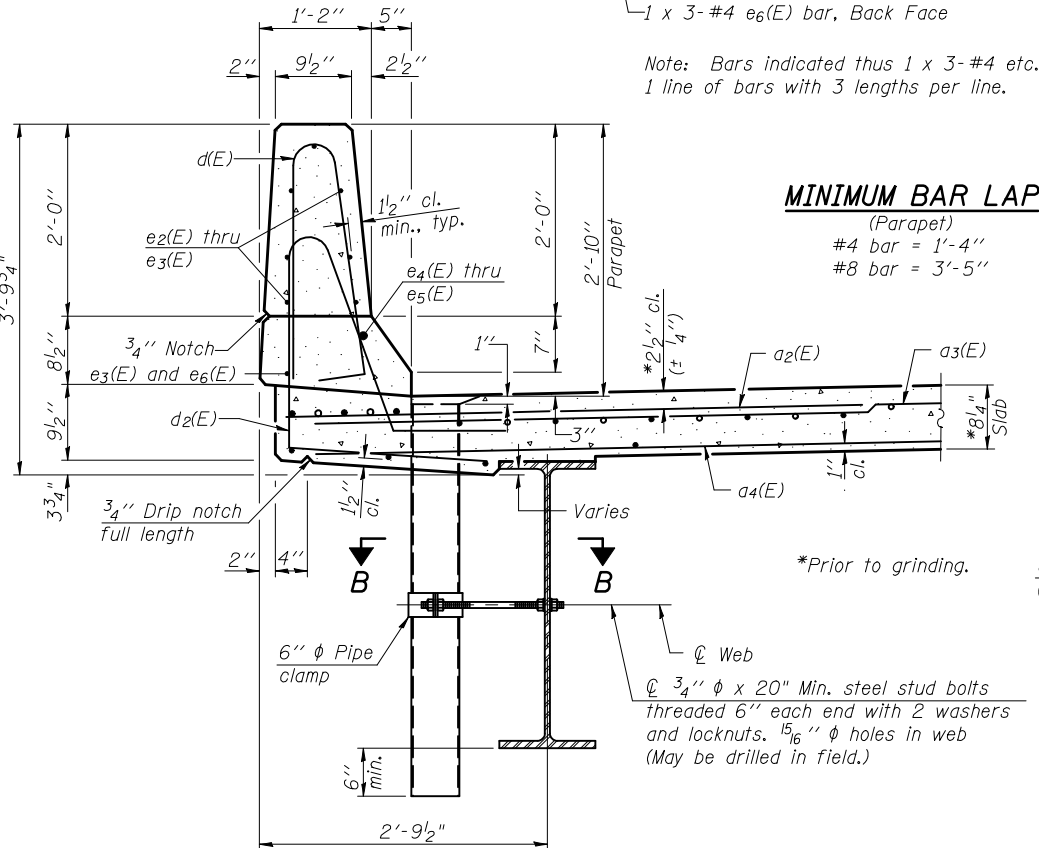


STATE OF ILLINOIS
DEPARTMENT OF TRANSPORTATION



INSIDE ELEVATION OF PARAPET

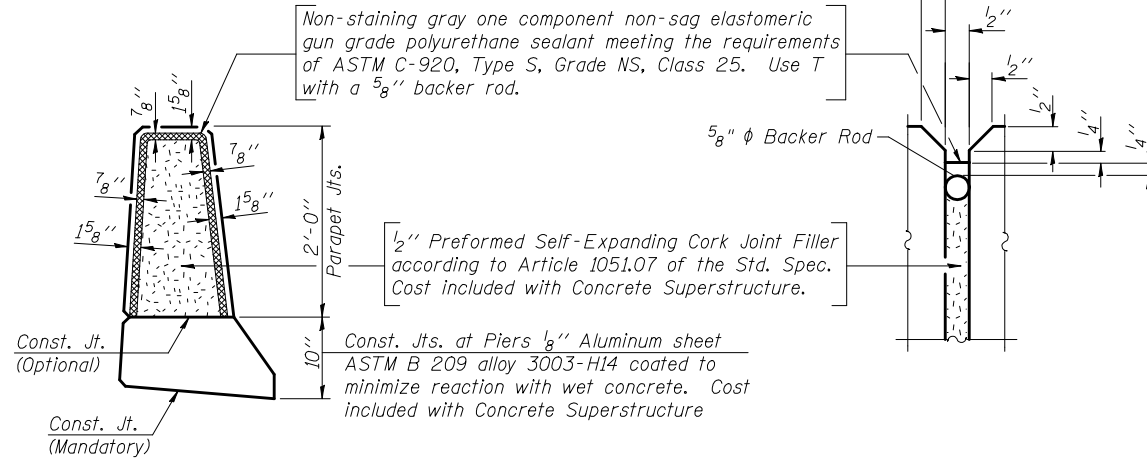
Note: Bars indicated thus 1 x 3-#4 etc. indicates 1 line of bars with 3 lengths per line.



SECTION THRU PARAPET

MINIMUM BAR LAP

(Parapet)
#4 bar = 1'-4"
#8 bar = 3'-5"

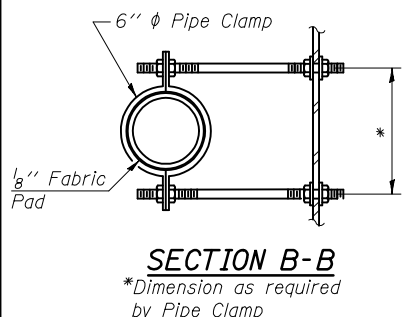
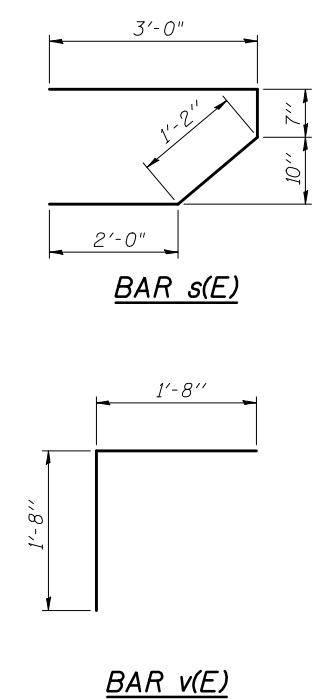


PARAPET JOINT DETAILS

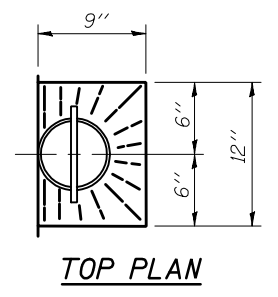
Notes:
Floor drains need not be painted.
Fiberglass pipe shall conform to ASTM D 2996, with short-time rupture strength hoop tensile stress of 30,000 p.s.i. minimum.

SUPERSTRUCTURE
BILL OF MATERIAL

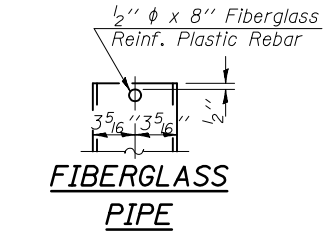
Bar	No.	Size	Length	Shape
a ₂ (E)	594	#6	6'-0"	—
a ₃ (E)	594	#5	17'-2"	—
a ₄ (E)	416	#5	16'-6"	—
b ₄ (E)	266	#5	26'-1"	—
b ₅ (E)	105	#6	19'-8"	—
b ₆ (E)	192	#5	30'-2"	—
d(E)	380	#5	5'-7"	┌
d ₂ (E)	380	#5	7'-6"	┌
e ₂ (E)	112	#4	17'-6"	—
e ₃ (E)	32	#4	14'-7"	—
e ₄ (E)	8	#8	37'-4"	—
e ₅ (E)	4	#8	14'-7"	—
e ₆ (E)	12	#4	24'-8"	—
m(E)	20	#6	17'-4"	—
m ₁ (E)	24	#6	7'-8"	—
m ₂ (E)	8	#6	5'-8"	—
m ₃ (E)	4	#6	2'-6"	—
m ₄ (E)	4	#6	2'-8"	—
s(E)	80	#5	6'-9"	┌
s ₁ (E)	64	#4	9'-10"	┌
v(E)	72	#5	3'-4"	┌
Reinforcement Bars, Epoxy Coated		Pound	49,610	
Concrete Superstructure		Cu. Yds.	229.1	



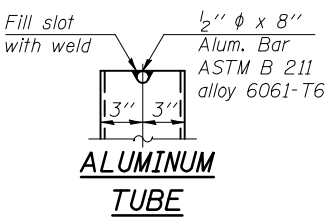
SECTION B-B
*Dimension as required by Pipe Clamp



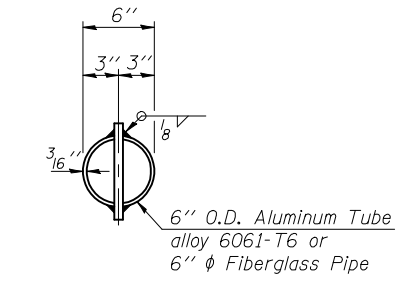
TOP PLAN



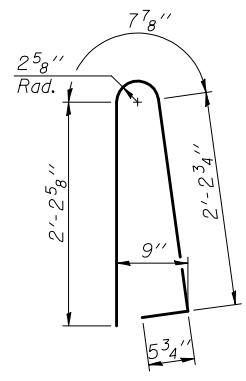
FIBERGLASS PIPE



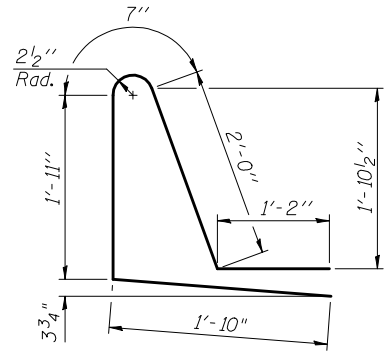
ALUMINUM TUBE



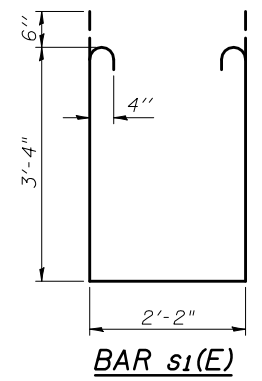
TOP PLAN
(Showing Aluminum Tube)



BAR d(E)



BAR d₂(E)



BAR s₁(E)

DESIGNED	KMS
CHECKED	SMM
DRAWN	KMS
CHECKED	SMM

SUPERSTRUCTURE DETAILS
STRUCTURE NO. 020-0064

SHEET NO. 12 22 SHEETS	F.A.P. RTE.	SECTION	COUNTY	TOTAL SHEETS	SHEET NO.
	71	(121BR)BR	DEWITT	75	41
			CONTRACT NO. 70429		
FED. ROAD DIST. NO. 5 ILLINOIS FED. AID PROJECT					

CLARK DIETZ, INC.