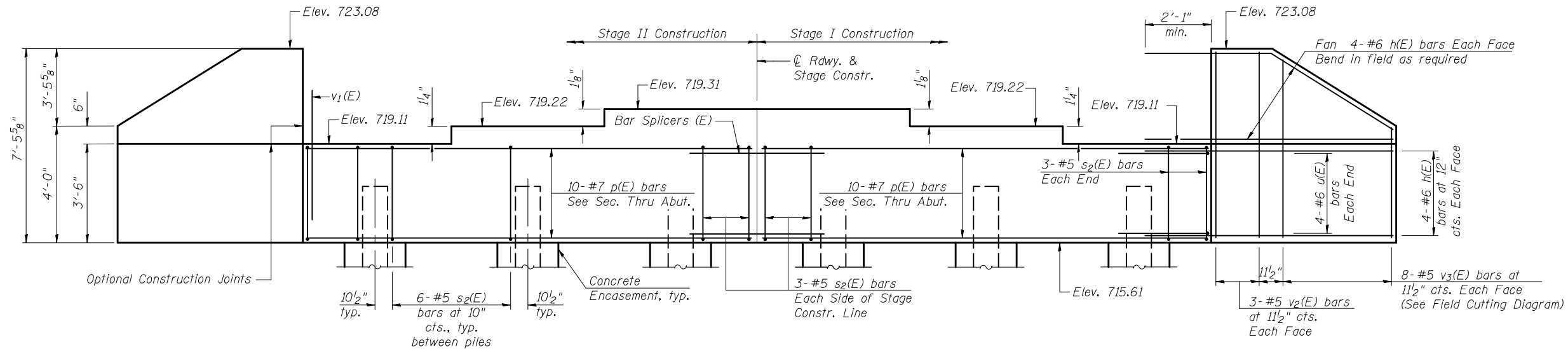
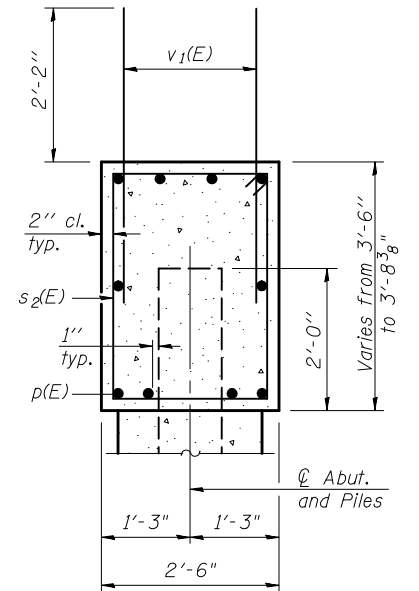


STATE OF ILLINOIS
DEPARTMENT OF TRANSPORTATION

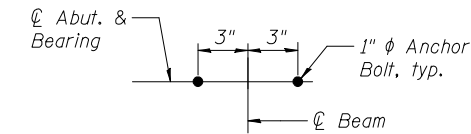
Notes:
Four steps monolithically with cap.



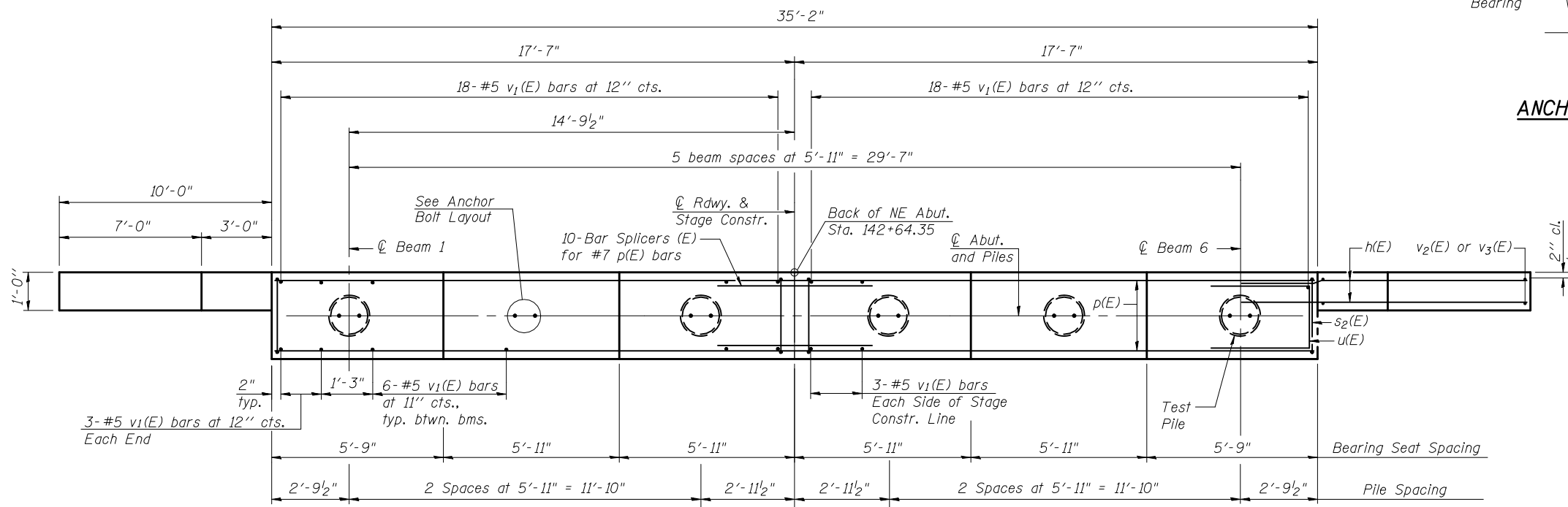
ELEVATION
(Looking Southwest)



SEC. THRU ABUT.



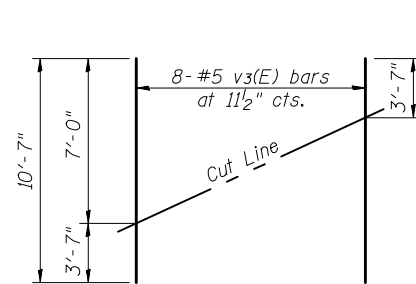
ANCHOR BOLT LAYOUT



PLAN

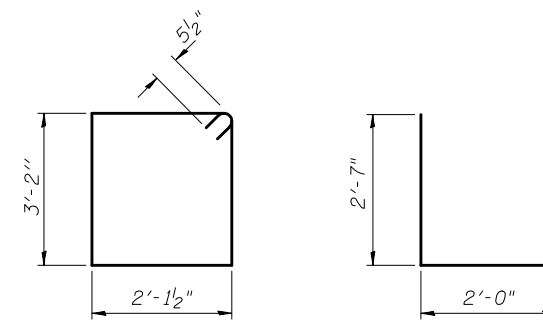
PILE DATA

Type: Metal Shell 14" ϕ x 0.312"
Nominal Required Bearing: 516 kips
Factored Resistance Available: 258 kips
Est. Length: 43 feet
No. Production Piles: 5
No. Test Piles: 1



FIELD CUTTING DIAGRAM

Order v3(E) full length. Cut as shown and use remainder of bars in opposite face.



BAR s2(E)

BAR u(E)

BILL OF MATERIAL

Bar	No.	Size	Length	Shape
h(E)	32	#6	12'-9"	—
p(E)	20	#7	17'-3"	—
s2(E)	36	#5	11'-6"	□
u(E)	8	#6	7'-2"	□
v1(E)	72	#5	4'-4"	—
v2(E)	12	#5	7'-0"	—
v3(E)	16	#5	10'-7"	—
Structure Excavation		Cu. Yd.	92	
Concrete Structures		Cu. Yd.	16.4	
Reinforcement Bars, Epoxy Coated		Pound	2,430	
Furnishing Metal Shell Piles 14" ϕ x 0.312"		Foot	215	
Driving Piles		Foot	215	
Test Pile, Metal Shell		Each	1	
Concrete Encasement		Cu. Yd.	3.3	

For details of Bar Splicers, see sheet 20 of 22.
For details of piles and Concrete Encasement, see sheet 19 of 22.

**NORTHEAST ABUTMENT DETAILS
STRUCTURE NO. 020-0064**

DESIGNED	SMM
CHECKED	KMS
DRAWN	SMM
CHECKED	MTH

SHEET NO. 17 22 SHEETS	F.A.P. RTE. 71	SECTION (121BR)BR	COUNTY DEWITT	TOTAL SHEETS 75	SHEET NO. 46
	CONTRACT NO. 70429				
FED. ROAD DIST. NO. 5 ILLINOIS FED. AID PROJECT					

CLARK DIETZ, INC.