

SEC. 27, T. 17 N., R. 9 E., 3rd P.M.

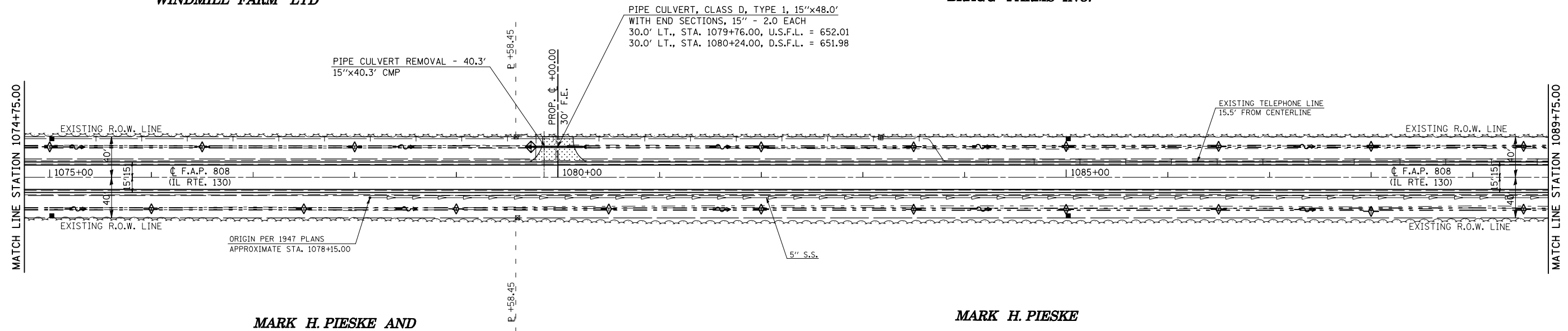
F.A.P. RTE.	SECTION	COUNTY	TOTAL SHEETS	SHEET NO.
808	.	..	715	74
STA. 1074+75.00		TO STA. 1089+75.00		
FED. ROAD DIST. NO.		ILLINOIS FED. AID PROJECT		

- (205,57,105)RS-2
- CHAMPAIGN & DOUGLAS

WINDMILL FARM LTD

BRAGG FARMS INC.

PLAN	SURVEYED	BY	DATE
	PLOTTED		
	CHECKED		
	DATE		

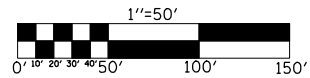


MARK H. PIESKE AND
PATRICIA A. PIESKE, ET. AL.
5527008

MARK H. PIESKE

- INCIDENTAL HOT-MIX ASPHALT SURFACING
- AGGREGATE SURFACE COURSE, TYPE B
- HOT-MIX ASPHALT SURFACE REMOVAL - BUTT JOINT
- DRIVEWAY PAVEMENT REMOVAL

SEC. 26, T. 17 N., R. 9 E., 3rd P.M.



PROFILE	SURVEYED	BY	DATE
	PLOTTED		
	CHECKED		
	DATE		

PLOT DATE = 8/13/2009
FILE NAME = c:\pwworking\pmdot\gearlock\j\001445\70623\1074-1089\1074-1089.dwg
PLOT SCALE = 1/8" = 100' / IN.
USER NAME = gearlockj

