
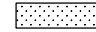




F.A.P. RTE.	SECTION	COUNTY	TOTAL SHEETS	SHEET NO.
808	.	..	715	78
STA. 1134+75.00		TO STA. 1998+50.00		
FED. ROAD DIST. NO. ILLINOIS FED. AID PROJECT				

SEC. 23, T. 17 N., R. 9 E., 3rd P.M.

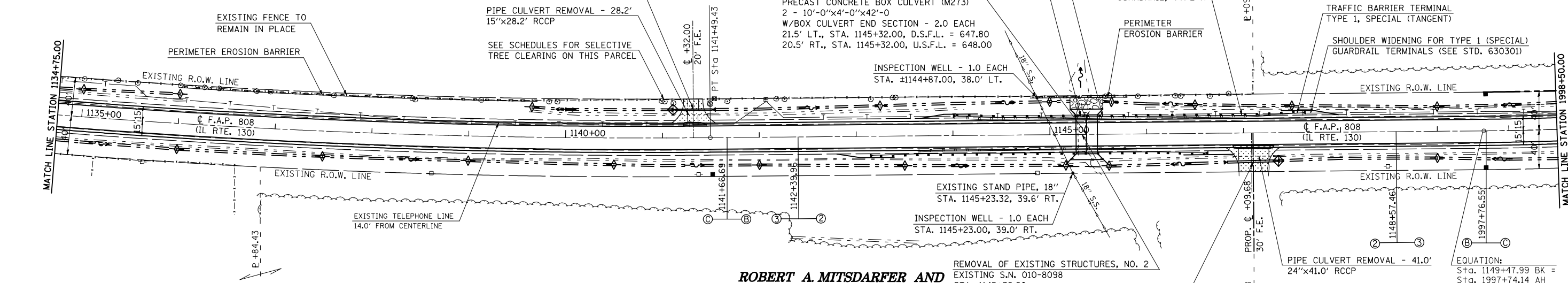
**ROBERT A. MITS DARFER AND  
RAMONA A. MITS DARFER**  
5527011

**BUSEY BANK, TRUSTEE**  
5527012

-  INCIDENTAL HOT-MIX ASPHALT SURFACING
-  AGGREGATE SURFACE COURSE, TYPE B
-  HOT-MIX ASPHALT SURFACE REMOVAL - BUTT JOINT
-  DRIVEWAY PAVEMENT REMOVAL

PIPE CULVERT, CLASS D, TYPE 1, 15"x38.0'  
WITH END SECTIONS, 15' - 2.0 EACH  
29.0' LT., STA. 1141+13.50, U.S.F.L. = 654.00  
29.0' RT., STA. 1141+51.50, D.S.F.L. = 653.74

A.R. STA. 1145+38.00, CULVERT #3  
PROPOSED S.N. 010-2036  
PRECAST CONCRETE BOX CULVERT (M273)  
2 - 10'-0"x4'-0"x42'-0  
W/BOX CULVERT END SECTION - 2.0 EACH  
21.5' LT., STA. 1145+32.00, D.S.F.L. = 647.80  
20.5' RT., STA. 1145+32.00, U.S.F.L. = 648.00

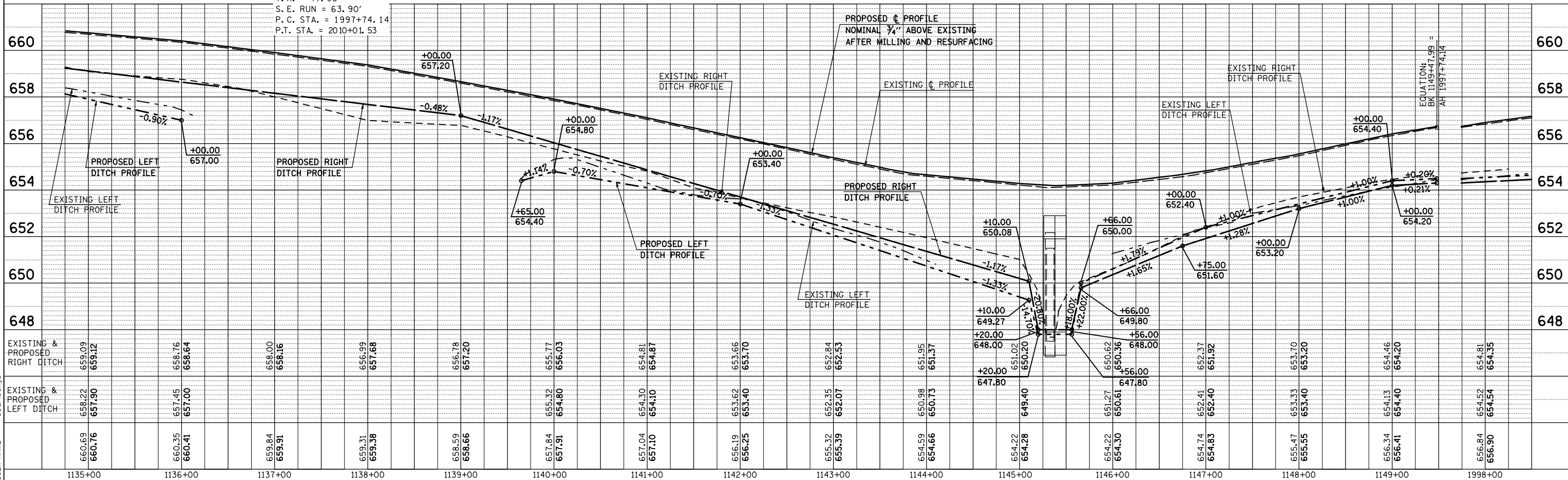
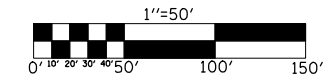


**ROBERT A. MITS DARFER AND  
RAMONA A. MITS DARFER**  
5527011

**ROBERT A. MITS DARFER AND  
RAMONA A. MITS DARFER**  
5527011

**BUSEY BANK, TRUSTEE**  
5527012

SEC. 23, T. 17 N., R. 9 E., 3rd P.M.



PLAN	SURVEYED	BY	DATE
	PLOTTED		
	NOTED		
	FILED		

PROFILE	SURVEYED	BY	DATE
	PLOTTED		
	NOTED		
	FILED		

PLOT DATE = 8/13/2009  
FILE NAME = c:\pwworkspace\pwworkspace\1058824\1058824.dwg  
PLOT SCALE = 1/8"=1'-0"  
USER NAME = georlockj