

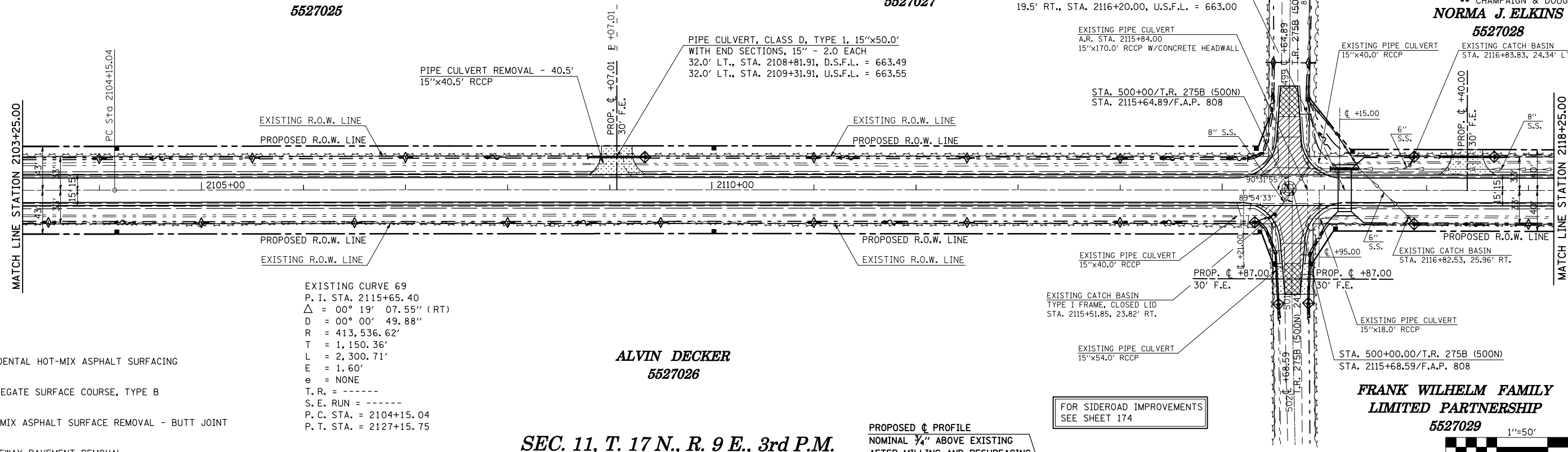
SEC. 10, T. 17 N., R. 9 E., 3rd P.M.

GENEVIEVE T. CLARK  
5527025

JOHN P. HINTZ  
5527027

F.A.P. RTE.	SECTION	COUNTY	TOTAL SHEETS	SHEET NO.
808	*	**	715	86
STA. 2103+25.00 TO STA. 2118+25.00				
FED. ROAD DIST. NO. ILLINOIS FED. AID PROJECT				
* (205,57,105)RS-2				
** CHAMPAIGN & DOUGLAS				
<b>NORMA J. ELKINS</b>				
<b>5527028</b>				
EXISTING PIPE CULVERT 15"x40.0' RCCP				
EXISTING CATCH BASIN STA. 2116+83.83, 24.34' LT.				

A.R. STA. 2116+20.00, CULVERT #7  
PROPOSED S.N. 010-8142  
PRECAST CONCRETE BOX CULVERT (M273)  
12'-0"x2'-0"x39'-0"  
W/BOX CULVERT END SECTIONS - 2.0 EACH  
19.5' LT., STA. 2116+20.00, D.S.F.L. = 662.85  
19.5' RT., STA. 2116+20.00, U.S.F.L. = 663.00



EXISTING CURVE 69  
P. I. STA. 2115+65.40  
 $\Delta = 00^\circ 19' 07.55''$  (RT)  
D = 00' 00" 49.88"  
R = 413,536.62'  
T = 1,150.36'  
L = 2,300.71'  
E = 1.60'  
e = NONE  
T. R. = -----  
S. E. RUN = -----  
P. C. STA. = 2104+15.04  
P. T. STA. = 2127+15.75

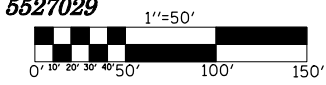
ALVIN DECKER  
5527026

SEC. 11, T. 17 N., R. 9 E., 3rd P.M.

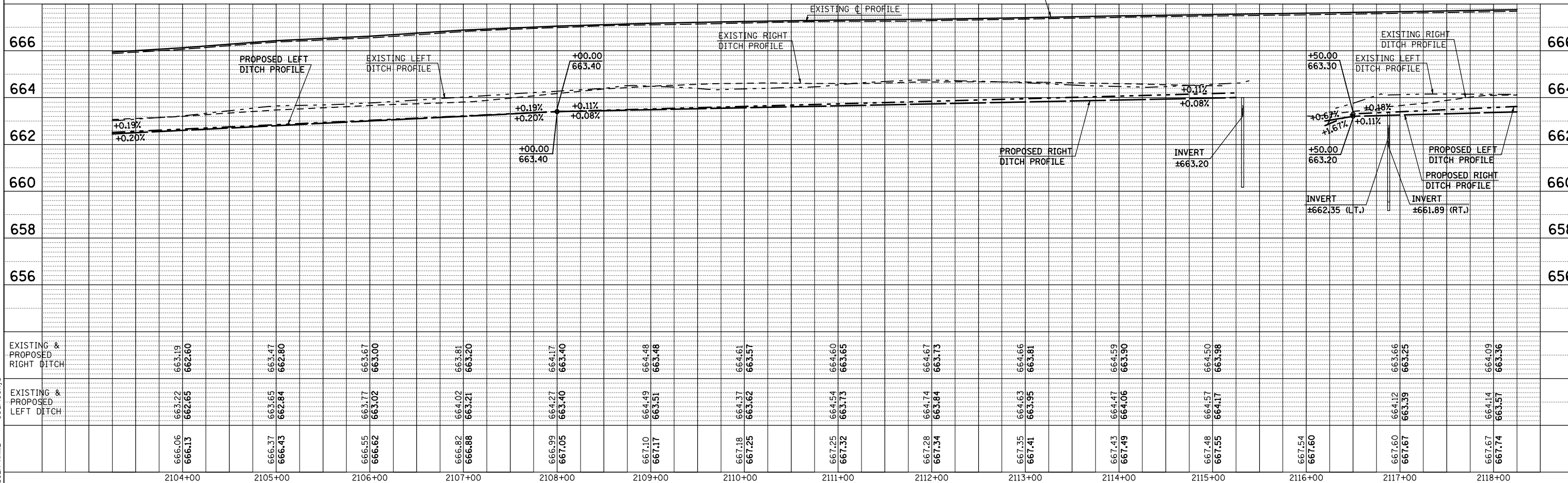
PROPOSED  $\nabla$  PROFILE  
NOMINAL  $\frac{3}{4}$ " ABOVE EXISTING  
AFTER MILLING AND RESURFACING

FOR SIDEROAD IMPROVEMENTS  
SEE SHEET 174

FRANK WILHELM FAMILY  
LIMITED PARTNERSHIP  
5527029



- INCIDENTAL HOT-MIX ASPHALT SURFACING
- AGGREGATE SURFACE COURSE, TYPE B
- HOT-MIX ASPHALT SURFACE REMOVAL - BUTT JOINT
- DRIVEWAY PAVEMENT REMOVAL



PLAN	SURVEYED	BY	DATE
PLOTTED	BY		
NOTE BOOK	CHECKED		
NO.	DATE		

PROFILE	SURVEYED	BY	DATE
PLOTTED	BY		
NOTE BOOK	CHECKED		
NO.	DATE		

PLOT DATE = 8/13/2009  
FILE NAME = c:\pwworkspace\pwworkspace\1058824\1058824.dwg  
PLOT SCALE = 1/8" = 1'-0"  
USER NAME = georgelockj