

F.A.P. RTE.	SECTION	COUNTY	TOTAL SHEETS	SHEET NO.
808	.	..	715	88
STA. 2133+50.00		TO STA. 2149+00.00		
FED. ROAD DIST. NO.		ILLINOIS FED. AID PROJECT		

- (205,57,105)RS-2
- CHAMPAIGN & DOUGLAS

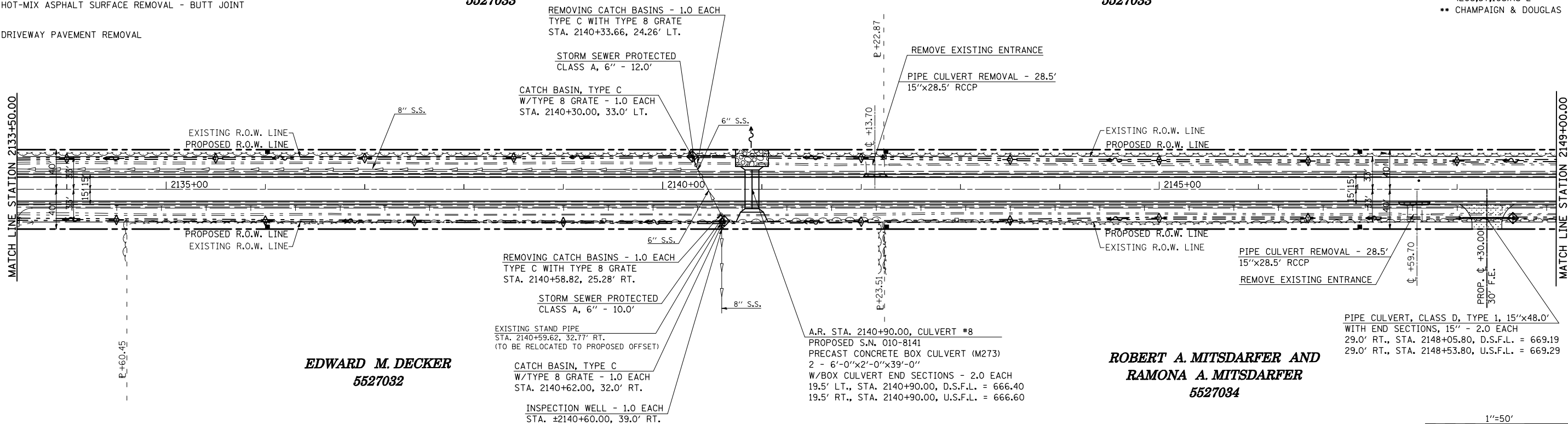
SEC. 3, T. 17 N., R. 9 E., 3rd P.M.

**DECKER FARMS, INC.,
A NEVADA CORPORATION
5527033**

**DECKER FARMS, INC.,
A NEVADA CORPORATION
5527033**



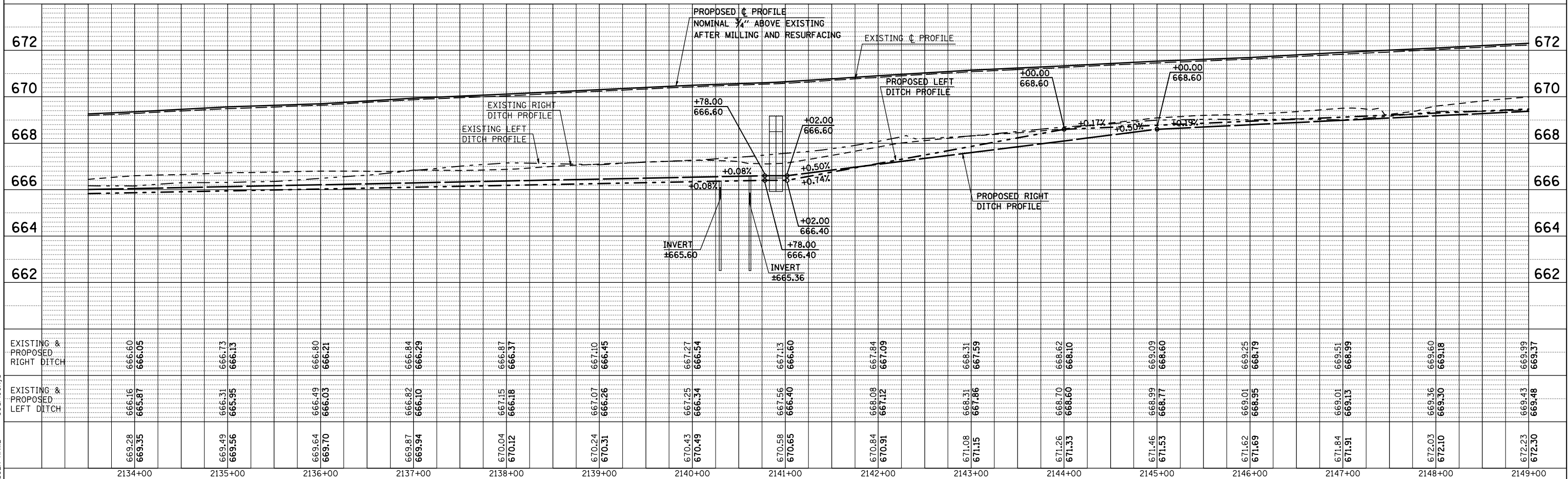
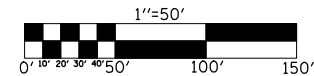
- INCIDENTAL HOT-MIX ASPHALT SURFACING
- AGGREGATE SURFACE COURSE, TYPE B
- HOT-MIX ASPHALT SURFACE REMOVAL - BUTT JOINT
- DRIVEWAY PAVEMENT REMOVAL



**EDWARD M. DECKER
5527032**

**ROBERT A. MITS DARFER AND
RAMONA A. MITS DARFER
5527034**

SEC. 2, T. 17 N., R. 9 E., 3rd P.M.



PLAN	SURVEYED	BY	DATE
NO.	PLOTTED		
	NOTED		
	REVIEWED		
	CHECKED		
	DATE		

PROFILE	SURVEYED	BY	DATE
NO.	PLOTTED		
	NOTED		
	REVIEWED		
	CHECKED		
	DATE		

PLOT DATE = 8/13/2009
 FILE NAME = c:\pwwork\p\mtdot\clearlock\j\001445\70623
 PLOT SCALE = 1/8" = 10'-0" / 1" = 120'-0"
 USER NAME = georlockj