

F.A.P. RTE.	SECTION	COUNTY	TOTAL SHEETS	SHEET NO.
808	.	..	715	90
STA. 2163+50.00		TO STA. 2178+25.00		
FED. ROAD DIST. NO.		ILLINOIS FED. AID PROJECT		

SEC. 3, T. 17 N., R. 9 E., 3rd P.M.

CHARLES J. DECKER, TRUSTEE

5527036

SEC. 34, T. 18 N., R. 9 E., 3rd P.M.

WINIFRED M. MILLER, ET AL.

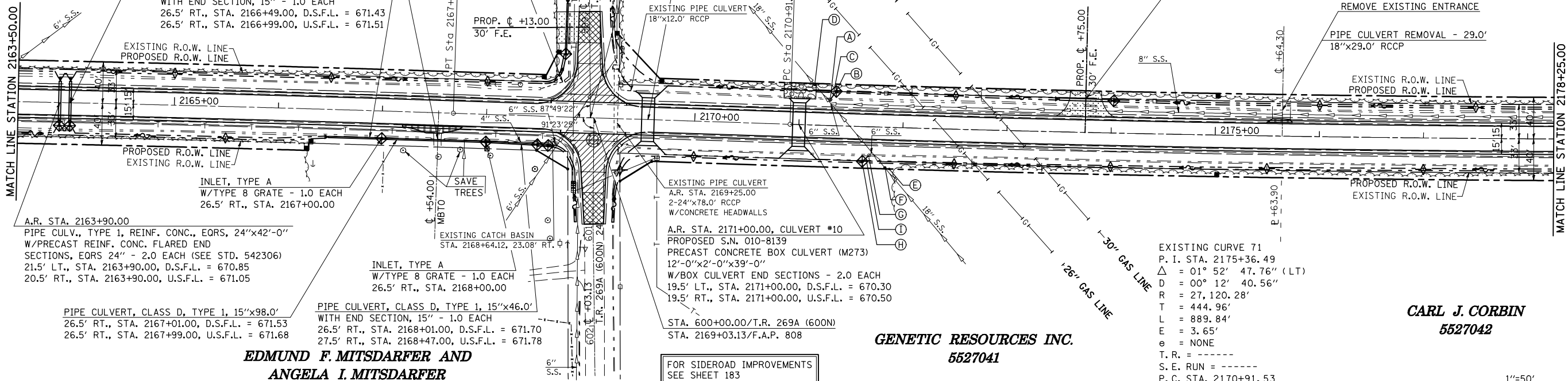
5527039

(205,57,105)RS-2
CHAMPAIGN & DOUGLAS

A.R. STA. 2164+00.00
PIPE CULV., TYPE 1, REINF. CONC., EQRS, 24"x42'-0"
W/PRECAST REINF. CONC. FLARED END
SECTIONS, EQRS 24" - 2.0 EACH (SEE STD. 542306)
21.5' LT., STA. 2164+00.00, D.S.F.L. = 670.80
20.5' RT., STA. 2164+00.00, U.S.F.L. = 671.00

PIPE CULVERT, CLASS D, TYPE 1, 15"x50.0'
WITH END SECTION, 15" - 1.0 EACH
26.5' RT., STA. 2166+49.00, D.S.F.L. = 671.43
26.5' RT., STA. 2166+99.00, U.S.F.L. = 671.51

MATCH LINE STATION 2163+50.00



A.R. STA. 2163+90.00
PIPE CULV., TYPE 1, REINF. CONC., EQRS, 24"x42'-0"
W/PRECAST REINF. CONC. FLARED END
SECTIONS, EQRS 24" - 2.0 EACH (SEE STD. 542306)
21.5' LT., STA. 2163+90.00, D.S.F.L. = 670.85
20.5' RT., STA. 2163+90.00, U.S.F.L. = 671.05

PIPE CULVERT, CLASS D, TYPE 1, 15"x98.0'
26.5' RT., STA. 2167+01.00, D.S.F.L. = 671.53
26.5' RT., STA. 2167+99.00, U.S.F.L. = 671.68

INLET, TYPE A
W/TYPE 8 GRATE - 1.0 EACH
26.5' RT., STA. 2167+00.00

PIPE CULVERT, CLASS D, TYPE 1, 15"x46.0'
WITH END SECTION, 15" - 1.0 EACH
26.5' RT., STA. 2168+01.00, D.S.F.L. = 671.70
27.5' RT., STA. 2168+47.00, U.S.F.L. = 671.78

**EDMUND F. MITS DARFER AND
ANGELA I. MITS DARFER**

5527035

SEC. 2, T. 17 N., R. 9 E., 3rd P.M.

FOR SIDEROAD IMPROVEMENTS
SEE SHEET 183

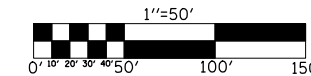
GENETIC RESOURCES INC.

5527041

EXISTING CURVE 71
P. I. STA. 2175+36.49
Δ = 01° 52' 47.76" (LT)
D = 00° 12' 40.56"
R = 27,120.28'
L = 444.96'
T = 889.84'
E = 3.65'
e = NONE
T. R. = -----
S. E. RUN = -----
P. C. STA. 2170+91.53
P. T. STA. 2179+81.37

CARL J. CORBIN

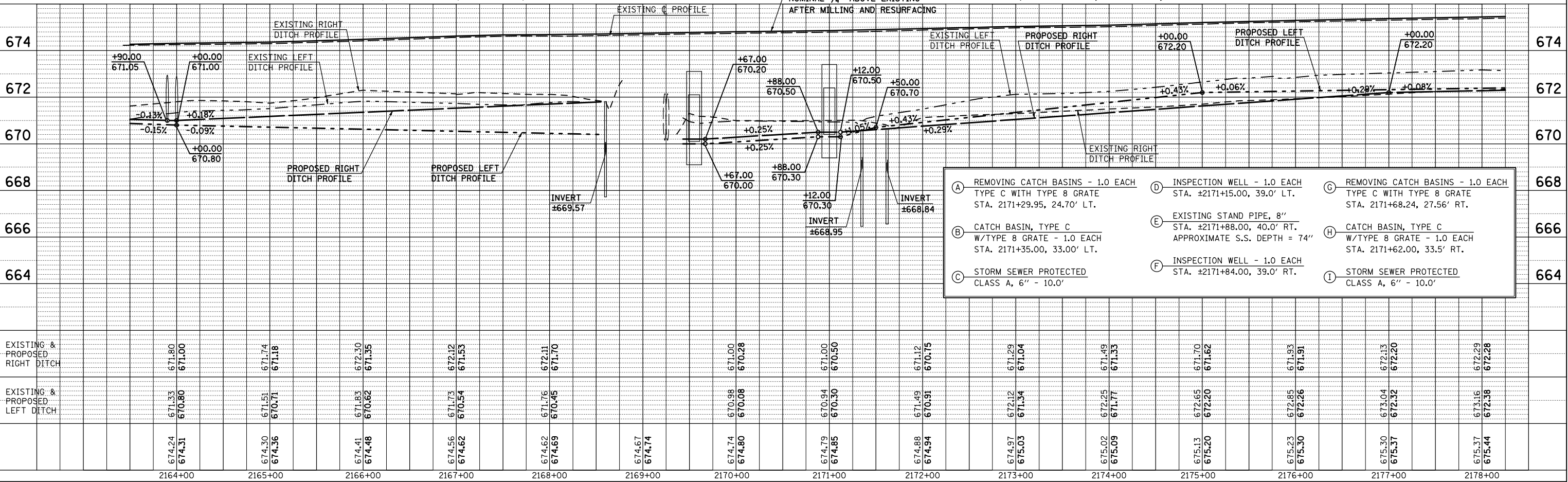
5527042



DATE	BY

DATE	BY

PLOT DATE = 8/13/2009
FILE NAME = c:\dw\work\p\m\DOT\GEARLOCK\JD\001445\70623-
PLOT SCALE = 1"=50'
USER NAME = gearlockj



- (A) REMOVING CATCH BASINS - 1.0 EACH
TYPE C WITH TYPE 8 GRATE
STA. 2171+29.95, 24.70' LT.
- (B) CATCH BASIN, TYPE C
W/TYPE 8 GRATE - 1.0 EACH
STA. 2171+35.00, 33.00' LT.
- (C) STORM SEWER PROTECTED
CLASS A, 6" - 10.0'
- (D) INSPECTION WELL - 1.0 EACH
STA. 2171+15.00, 39.0' LT.
- (E) EXISTING STAND PIPE, 8"
STA. 2171+88.00, 40.0' RT.
APPROXIMATE S.S. DEPTH = 74"
- (F) INSPECTION WELL - 1.0 EACH
STA. 2171+84.00, 39.0' RT.
- (G) REMOVING CATCH BASINS - 1.0 EACH
TYPE C WITH TYPE 8 GRATE
STA. 2171+68.24, 27.56' RT.
- (H) CATCH BASIN, TYPE C
W/TYPE 8 GRATE - 1.0 EACH
STA. 2171+62.00, 33.5' RT.
- (I) STORM SEWER PROTECTED
CLASS A, 6" - 10.0'