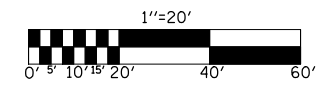


F.A.P. RTE.	SECTION	COUNTY	TOTAL SHEETS	SHEET NO.
808	*	**	715	201
STA.		TO STA.		
FED. ROAD DIST. NO.	ILLINOIS	FED. AID PROJECT		

- (205,57,105)RS-2
- ** CHAMPAIGN & DOUGLAS



**FREDERICK MAX FRANKS AND THE
MARGARETH A. GORDON REVOCABLE TRUST**
5527048

PIPE CULVERT, TYPE 1, RCCP, 18"x50.0'
WITH PRECAST REINFORCED CONCRETE FLARED
END SECTIONS, 18" - 2.0 EACH (SEE STD. 542301)
31.0' LT., STA. 2274+76.19, D.S.F.L. = 707.59
31.0' LT., STA. 2275+26.19, U.S.F.L. = 707.96

PIPE CULVERT REMOVAL - 54.0'
15"x54.0' CMP

2274+81.43
60.00' LT.

2274+71.43
40.00' LT.

STA. 800+00.00/ROOSEVELT RD (800N)
STA. 2275+02.19/F.A.P. 808

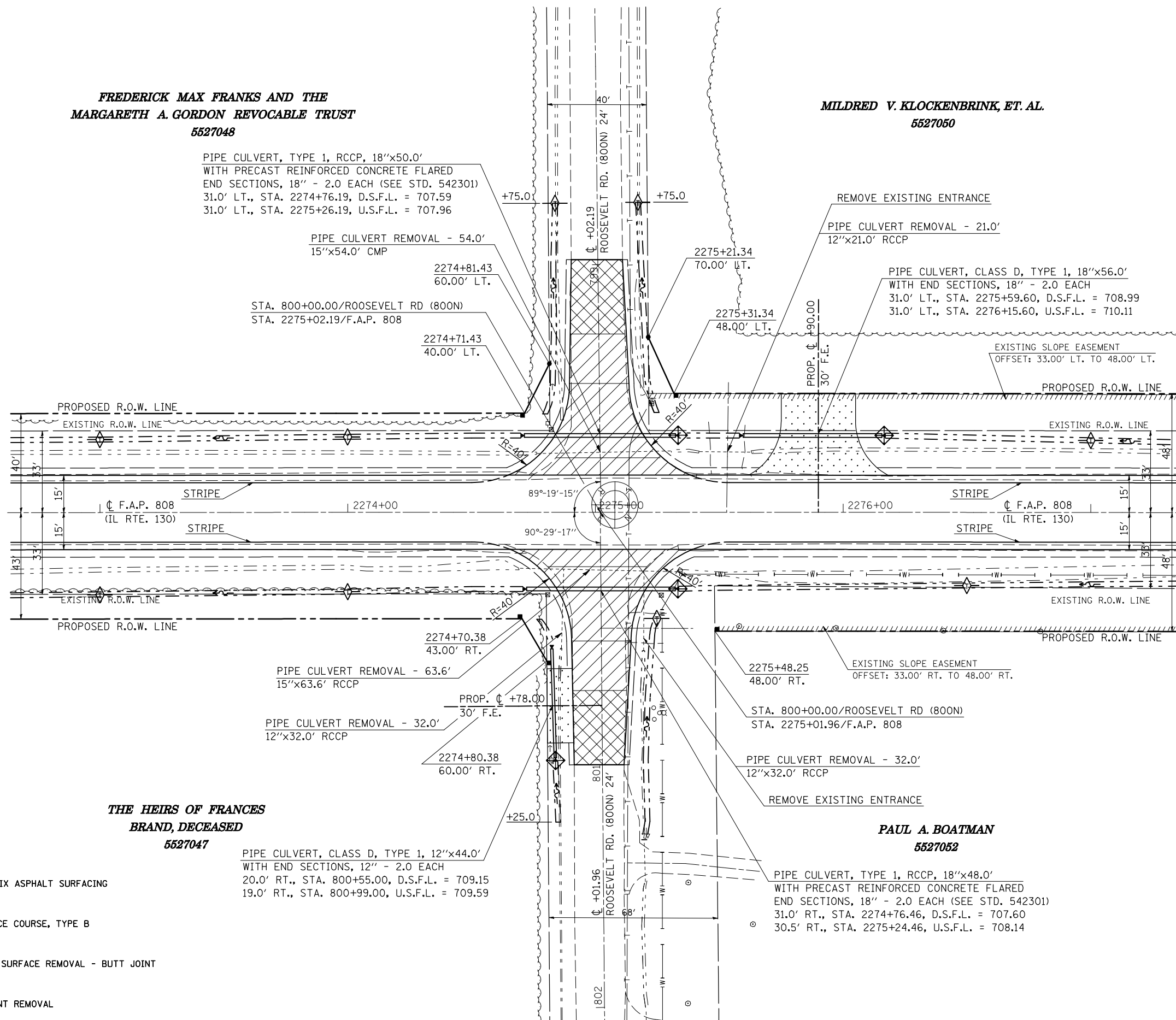
MILDRED V. KLOCKENBRINK, ET. AL.
5527050

REMOVE EXISTING ENTRANCE

PIPE CULVERT REMOVAL - 21.0'
12"x21.0' RCCP

PIPE CULVERT, CLASS D, TYPE 1, 18"x56.0'
WITH END SECTIONS, 18" - 2.0 EACH
31.0' LT., STA. 2275+59.60, D.S.F.L. = 708.99
31.0' LT., STA. 2276+15.60, U.S.F.L. = 710.11

EXISTING SLOPE EASEMENT
OFFSET: 33.00' LT. TO 48.00' LT.



**THE HEIRS OF FRANCES
BRAND, DECEASED**
5527047

PIPE CULVERT, CLASS D, TYPE 1, 12"x44.0'
WITH END SECTIONS, 12" - 2.0 EACH
20.0' RT., STA. 800+55.00, D.S.F.L. = 709.15
19.0' RT., STA. 800+99.00, U.S.F.L. = 709.59

PIPE CULVERT REMOVAL - 63.6'
15"x63.6' RCCP

PIPE CULVERT REMOVAL - 32.0'
12"x32.0' RCCP

2274+80.38
60.00' RT.

+25.0

PAUL A. BOATMAN
5527052

PIPE CULVERT, TYPE 1, RCCP, 18"x48.0'
WITH PRECAST REINFORCED CONCRETE FLARED
END SECTIONS, 18" - 2.0 EACH (SEE STD. 542301)
31.0' RT., STA. 2274+76.46, D.S.F.L. = 707.60
30.5' RT., STA. 2275+24.46, U.S.F.L. = 708.14

2275+48.25
48.00' RT.

STA. 800+00.00/ROOSEVELT RD (800N)
STA. 2275+01.96/F.A.P. 808

PIPE CULVERT REMOVAL - 32.0'
12"x32.0' RCCP

REMOVE EXISTING ENTRANCE

INCIDENTAL HOT-MIX ASPHALT SURFACING

AGGREGATE SURFACE COURSE, TYPE B

HOT-MIX ASPHALT SURFACE REMOVAL - BUTT JOINT

DRIVEWAY PAVEMENT REMOVAL

PLOT DATE = 8/12/2009
FILE NAME = G:\DWG\WORK\PROJECTS\CEARLOCK\DWG\010445\70623-sht-inter.sec.dgn
USER NAME = ceartock\j

ILLINOIS DEPARTMENT OF TRANSPORTATION
INTERSECTION PLAN SHEET
ROOSEVELT RD./800N &
F.A.P. 808 (IL. RTE. 130)
F.A.P. 808 (IL. RTE. 130)
SECTION (205,57,105)RS-2
CHAMPAIGN & DOUGLAS COUNTIES
SCALE: 1" = 20'
DATE: 07/10/09
DRAWN BY: B.B.P.
CHECKED BY: G.A.E.