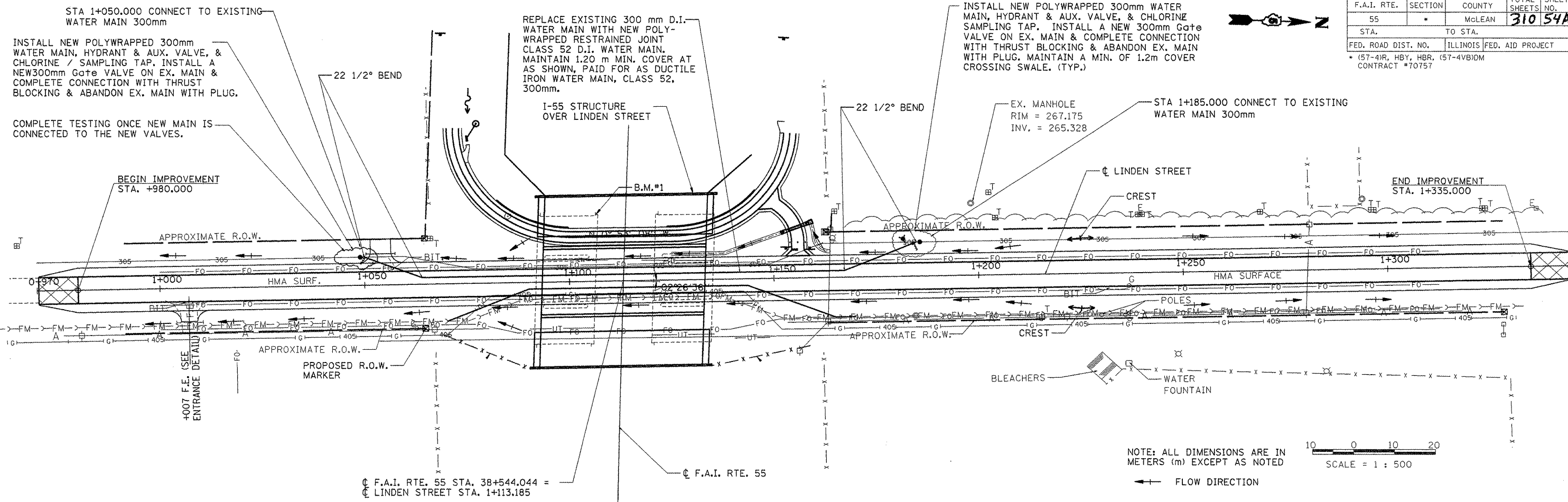


F.A.I. RTE.	SECTION	COUNTY	TOTAL SHEETS	SHEET NO.
55		McLEAN	310	54A
STA.		TO STA.		
FED. ROAD DIST. NO.		ILLINOIS FED. AID PROJECT		
		* (57-4)R, HBY, HBR, (57-4)B)DM CONTRACT #70757		



B.M. #1 N.W. WINGWALL COR @ NORTH BOUND I-55 BRIDGE OVER LINDEN STREET ELEV. = 272.135	B.M. #2 CHISELED "□" IN CTR OF CRASHWALL OF WEST PIER OF SOUTH BOUND I-55 BRIDGE ELEV. = 267.253	B.M. #3 60d IN P.P., RT, STA. 0+913.185 ELEV. = 263.074	B.M. #4 60d IN P.P., STA. 1+358.185, 12 RT. ELEV. = 264.986
---	---	---	--

NOTE: ALL DIMENSIONS ARE IN METERS (m) EXCEPT AS NOTED

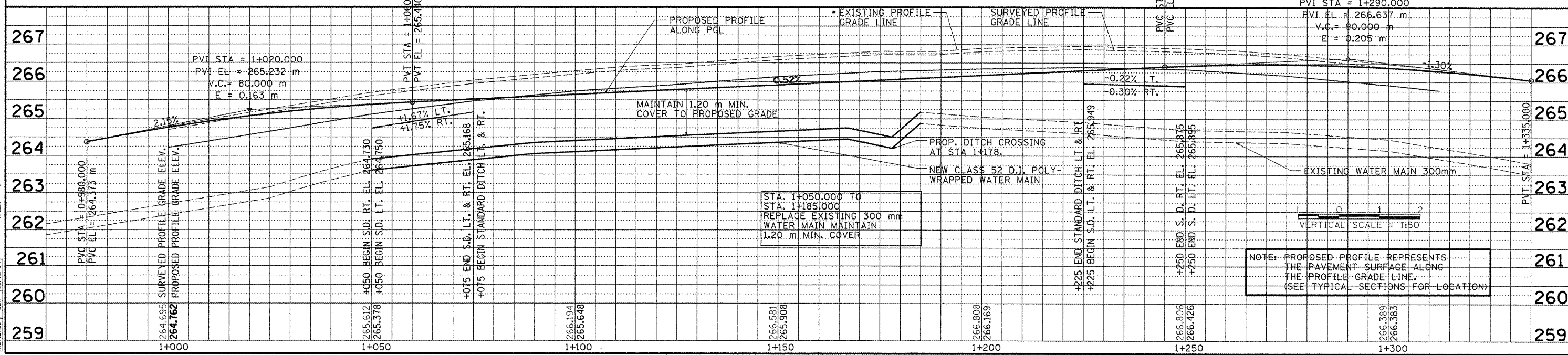
SCALE = 1 : 500

← FLOW DIRECTION

\* EXISTING PROFILE GRADE LINE WAS ESTIMATED BASED ON SURVEYED PROFILE GRADE LINE AND PLANNED 89 mm BITUMINOUS OVERLAY.



W. Alan Alward 7/28/09  
W. ALAN ALWARD  
PROFESSIONAL ENGINEER NO. 062-061006  
EXPIRATION DATE NOV. 30, 2009



(WATER MAIN) LINDEN STREET - STATIONS 1+000 TO 1+299