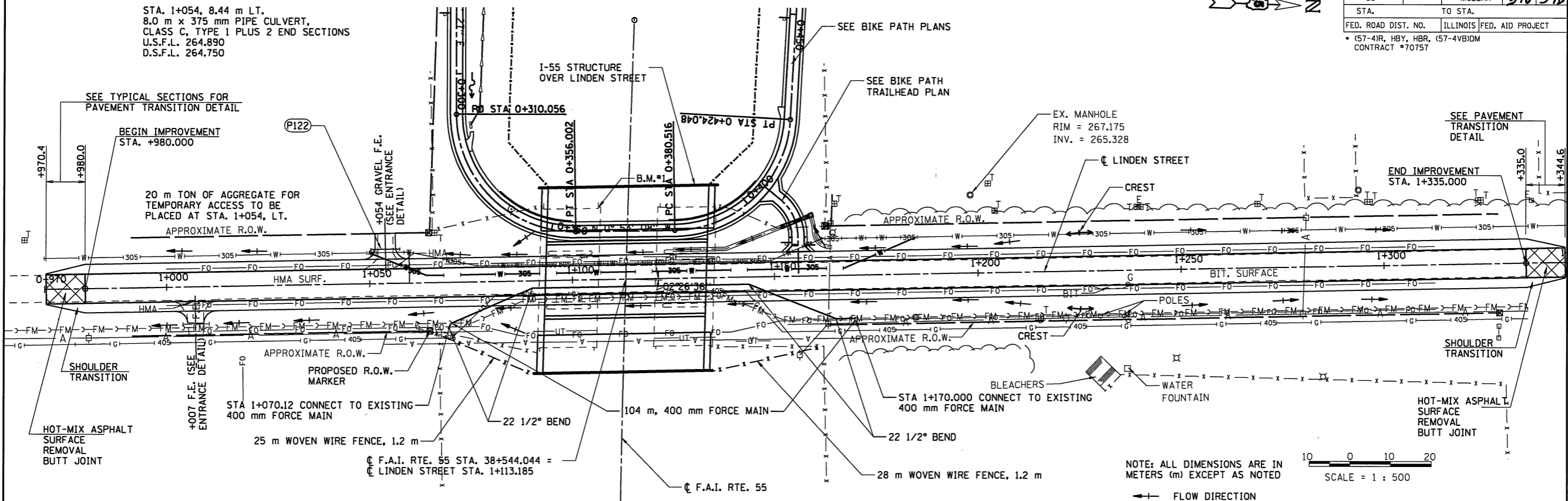
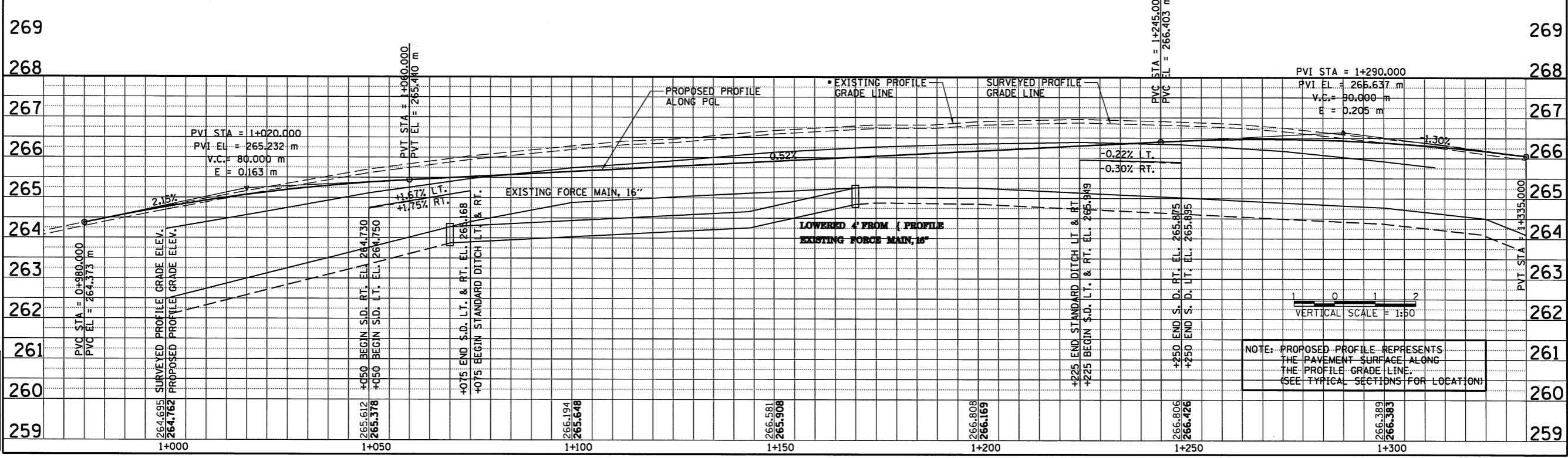


F.A.I. RTE.	SECTION	COUNTY	TOTAL SHEETS NO.	SHEET NO.
55	*	McLEAN	310	548
STA.	TO STA.			
FED. ROAD DIST. NO.	ILLINOIS	FED. AID PROJECT		
* (57-4R, HBY, HBR, (57-4VB)DM CONTRACT #70757				



271	B.M. #1 N.W. WINGWALL COR @ NORTH BOUND I-55 BRIDGE OVER LINDEN STREET ELEV. = 272.135	B.M. #2 CHISELED "□" IN CTR OF CRASHWALL OF WEST PIER OF SOUTH BOUND I-55 BRIDGE ELEV. = 267.253	B.M. #3 60d IN P.P., RT. STA. 0+913.185 ELEV. = 263.074	B.M. #4 60d IN P.P., STA. 1+358.185, 12 RT. ELEV. = 264.986	271
-----	---	---	---	--	-----



LAYOUT	DLH	03/08/04
DRAWN	DLH	03/18/04
REVIEWED	DLH	03/18/04

(FORCE MAIN) LINDEN STREET - STATIONS 1+000 TO 1+299