

LINDEN STREET MAINTENANCE OF TRAFFIC

GENERAL NOTES

THE BIKE PATH SHALL NOT BE CLOSED AT THE OLD RAILROAD STRUCTURE UNTIL NEW BIKE PATH WITH TEMPORARY CONNECTIONS TO LINDEN STREET ARE COMPLETE.

LINDEN ST. AND THE TEMPORARY BIKE PATH SHALL BE LIMITED TO DAYTIME CLOSURES ONLY DURING STAGES 2 & 3. CONTRACTOR SHALL REMOVE ALL EQUIPMENT AND DEBRIS FROM LINDEN ST. AND THE BIKE PATH AT THE END OF EACH DAY TO MAINTAIN THE NOTED TRAVEL WIDTHS.

THE LINDEN STREET PROFILE ADJUSTMENT SHALL BE COMPLETED PRIOR TO ANY CONSTRUCTION ON THE I-55 STRUCTURES THAT WOULD REDUCE THE VERTICAL CLEARANCE OVER LINDEN STREET.

CONTRACTOR SHALL PROVIDE ALL TRAFFIC SIGNALS, BARRIERS, SIGNS AND DRUMS NECESSARY FOR THE MAINTENANCE OF TRAFFIC, UNLESS IDENTIFIED IN THE SPECIAL PROVISIONS.

CONTRACTOR SHALL PROVIDE ADEQUATE DRAINAGE AND EROSION PROTECTION THROUGHOUT THE DURATION OF THE PROJECT.

ALL WARNING SIGNS WILL BE BLACK LEGEND AND BORDER ON FLUORESCENT ORANGE BACKGROUND. ALL WARNING SIGNS SHALL HAVE MINIMUM DIMENSIONS OF 1.2 m X 1.2 m.

SEE TEMPORARY CONCRETE BARRIER STANDARD FOR REFLECTOR REQUIREMENTS.

SUGGESTED CONSTRUCTION SEQUENCE
LINDEN STREET

STAGE 1A
CONSTRUCT TEMPORARY PAVEMENT WIDENING ON THE LEFT SIDE OF LINDEN STREET USING TRAFFIC CONTROL STANDARD 701326.
SEE MAINTENANCE OF TRAFFIC STAGE 1B FOR STATIONS AND OFFSETS.
RESTRICT TRAFFIC ON THE LEFT SIDE OF LINDEN STREET USING TRAFFIC CONTROL STANDARD 701306 LANE CLOSURE 2L, 2W, SLOW MOVING OPERATIONS - DAY ONLY FOR SPEEDS GREATER THAN OR EQUAL TO 45 MPH. SAWCUT EXISTING PAVEMENT FULL LENGTH OF PROJECT. (COST INCLUDED IN PAVEMENT REMOVAL)

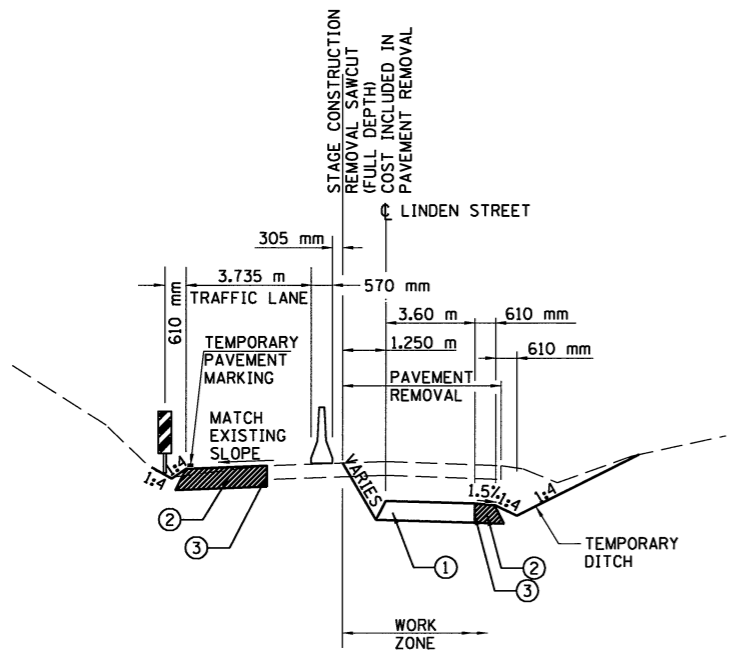
STAGE 1B
INSTALL TEMPORARY TRAFFIC SIGNALS, PLACE THE TEMPORARY CONCRETE BARRIER, STRIPE THE PAVEMENT, AND RELOCATE THE TRAFFIC AS SHOWN.
DRIVE SHEET PILING, REMOVE EXISTING PAVEMENT, EXCAVATE, AND CONSTRUCT HOT-MIX ASPHALT BINDER COURSE AND TEMPORARY PAVEMENT WIDENING FOR THE RIGHT HALF OF LINDEN STREET.

STAGE 1C
RELOCATE THE TEMPORARY CONCRETE BARRIER AND THEN RELOCATE THE TRAFFIC AS SHOWN.
REMOVE THE LEFT HALF OF EXISTING LINDEN STREET, INCLUDING THE TEMPORARY PAVEMENT WIDENING, AND COMPLETE CONSTRUCTION OF THE HOT-MIX ASPHALT BINDER COURSE, AND TEMPORARY DITCH.
CONSTRUCT TEMPORARY BIKE PATH UNDER I-55 WITHIN 3 CALENDAR DAYS AFTER CLOSING EXISTING BIKE PATH.

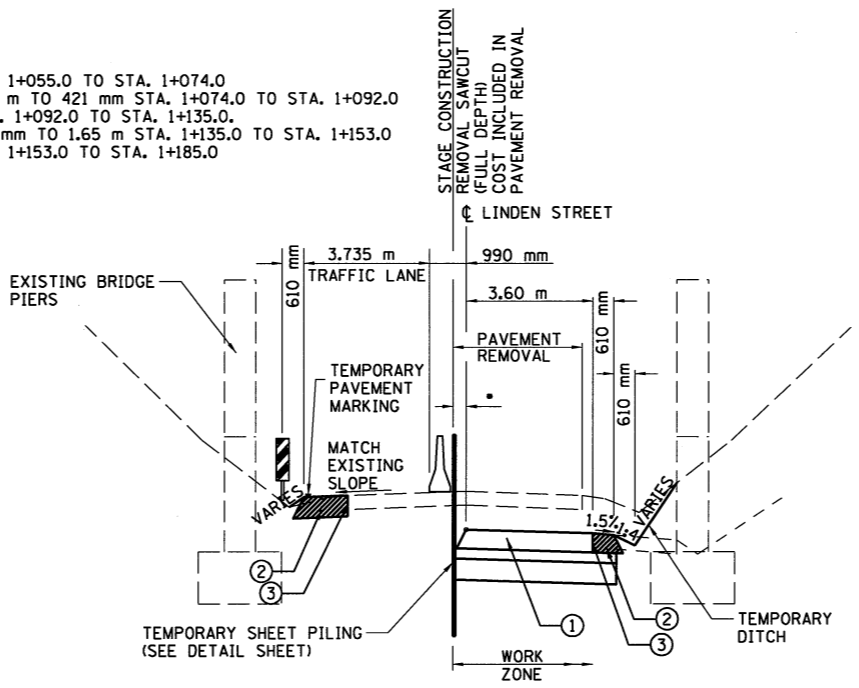
STAGE 2 & 3
RELOCATE THE TEMPORARY CONCRETE BARRIER AND THE TRAFFIC AS SHOWN. CONSTRUCT PROPOSED BIKE PATH.

STAGE 4
REMOVE TEMPORARY BIKE PATH (COST INCLUDED IN TEMPORARY PAVEMENT). CONSTRUCT HOT-MIX ASPHALT SURFACE COURSE, SHOULDERS, AND FINAL GRADING UNDER BRIDGES AFTER COMPLETION OF THE I-55 STRUCTURES.
HOT-MIX ASPHALT SURFACE COURSE TO BE PLACED USING STD 701306 FOR TRAFFIC CONTROL AND PROTECTION.

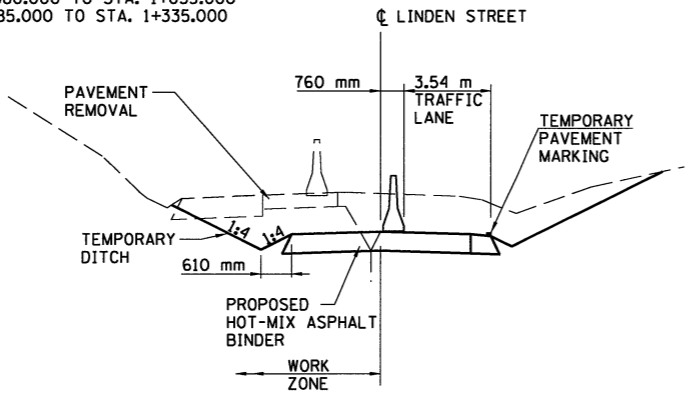
* 1.65 m STA. 1+055.0 TO STA. 1+074.0
VARIES 1.65 m TO 421 mm STA. 1+074.0 TO STA. 1+092.0
421 mm STA. 1+092.0 TO STA. 1+135.0
VARIES 421 mm TO 1.65 m STA. 1+135.0 TO STA. 1+153.0
1.65 m STA. 1+153.0 TO STA. 1+185.0



STAGE 1B - WORK ZONE
STA. 0+980.000 TO STA. 1+055.000
STA. 1+185.000 TO STA. 1+335.000



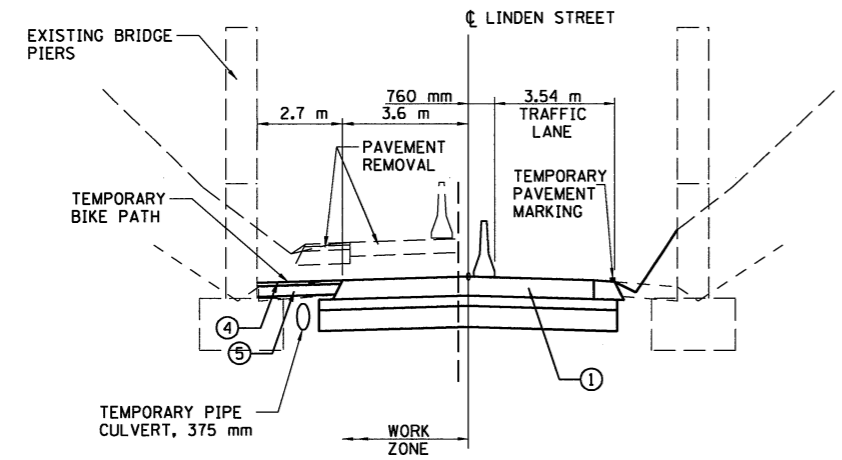
STAGE 1B - WORK ZONE
STA. 1+055.000 TO STA. 1+185.000



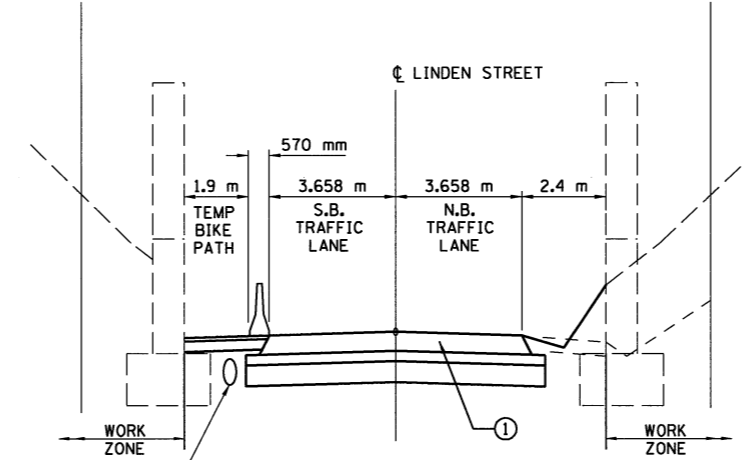
STAGE 1C - WORK ZONE
STA. 0+980.000 TO STA. 1+074.000
STA. 1+153.000 TO STA. 1+335.000

LEGEND

- ① HOT-MIX ASPHALT BINDER COURSE, 240 mm INCLUDED IN THE COST OF HOT-MIX ASPHALT PAVEMENT (FULL DEPTH), 280 mm (SEE STAGE 4 NOTES FOR SURFACE COURSE AND SHOULDERS) (SEE GENERAL NOTES SHEET FOR PAVEMENT MIX TABLE)
- ② TEMPORARY PAVEMENT WIDENING TO BE CONSTRUCTED WITH HOT-MIX ASPHALT PAVEMENT (FULL-DEPTH), 240 mm (240 mm BINDER COURSE-SEE GENERAL NOTES FOR MIX TABLE) (TO BE REMOVED AFTER STAGING BY SAW CUTTING. COST INCLUDED IN PAVEMENT REMOVAL PAY ITEM.)
- ③ SAW CUT (FULL DEPTH), INCLUDED IN THE COST OF PAVEMENT REMOVAL
- ④ 50 mm HOT-MIX ASPHALT SURFACE COURSE, IL 9.5L, M TON (SEE GENERAL NOTES SHEET FOR PAVEMENT MIX TABLE)
- ⑤ 150 mm AGGREGATE BASE COURSE, TYPE A, M TON



STAGE 1C - WORK ZONE
STA. 1+092.000 TO STA. 1+135.000



STAGE 2 & 3 - WORK ZONE
STA. 1+092.000 TO STA. 1+135.000

LAYOUT	JJH	03/02/04
DRAWN	JJH	03/02/04
REVIEWED	DLH	03/18/04

REVISIONS	
NAME	DATE

ILLINOIS DEPARTMENT OF TRANSPORTATION
F.A.I. 55
SECTION (57-4)R, HBY, HBR, (57-4)BIDM
MCLEAN COUNTY
**MAINTENANCE OF TRAFFIC
TYPICAL SECTIONS
LINDEN STREET**

JOB NO. 94S2063
DATE 8/17/2009