

STAGE 1 CONSTRUCTION
STATION AND OFFSET TO LEFT EDGE
OF TEMPORARY PAVEMENT WIDENING

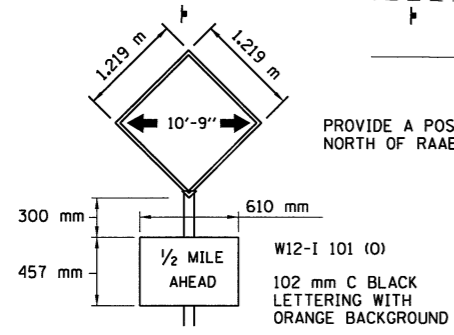
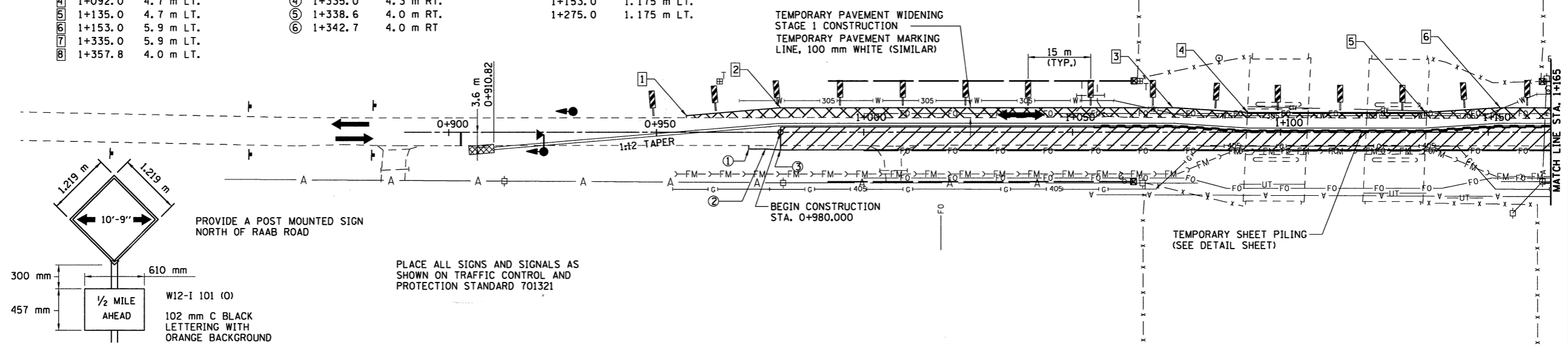
1	0+957.2	4.0 m LT.
2	0+980.0	5.9 m LT.
3	1+074.0	5.9 m LT.
4	1+092.0	4.7 m LT.
5	1+135.0	4.7 m LT.
6	1+153.0	5.9 m LT.
7	1+335.0	5.9 m LT.
8	1+357.8	4.0 m LT.

STATION AND OFFSET TO RIGHT EDGE
OF TEMPORARY PAVEMENT WIDENING

1	0+972.3	4.0 m RT.
2	0+976.4	4.0 m RT.
3	0+980.0	4.3 m RT.
4	1+335.0	4.3 m RT.
5	1+338.6	4.0 m RT.
6	1+342.7	4.0 m RT.

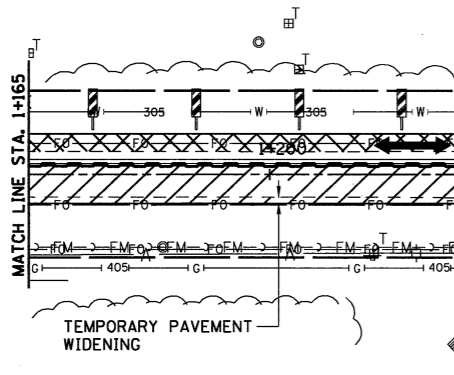
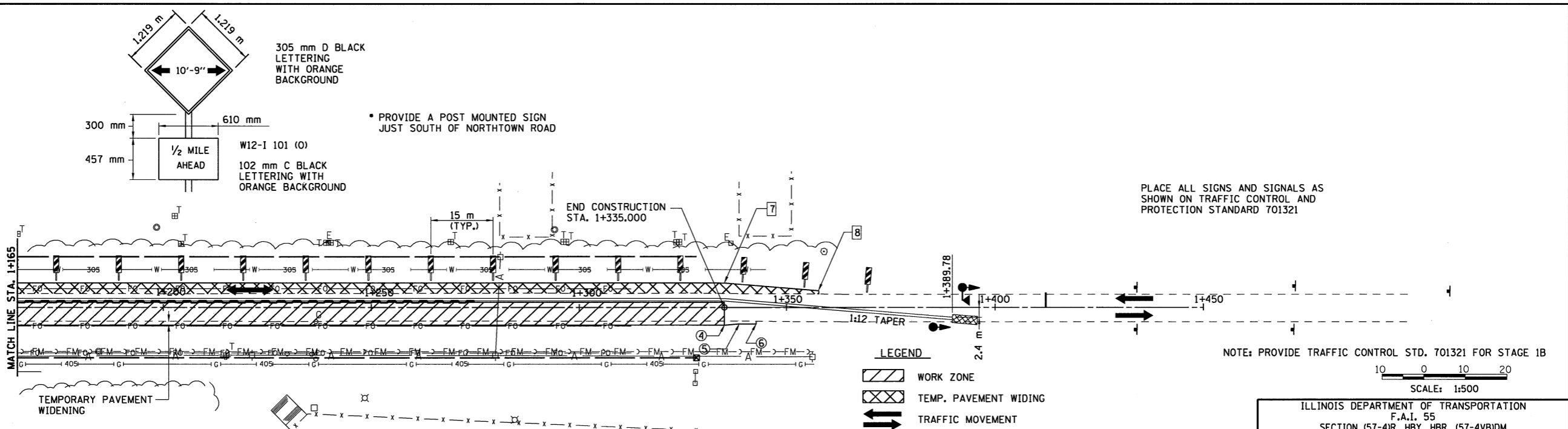
STATION AND OFFSET TO
SHEET PILING

1+055.0	1.175 m LT.
1+074.0	1.175 m LT.
1+092.0	0.000 m LT.
1+135.0	0.000 m LT.
1+153.0	1.175 m LT.
1+275.0	1.175 m LT.



PROVIDE A POST MOUNTED SIGN NORTH OF RAAB ROAD

PLACE ALL SIGNS AND SIGNALS AS SHOWN ON TRAFFIC CONTROL AND PROTECTION STANDARD 701321



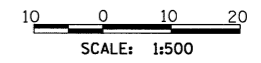
305 mm D BLACK LETTERING WITH ORANGE BACKGROUND

PROVIDE A POST MOUNTED SIGN JUST SOUTH OF NORTHTOWN ROAD

PLACE ALL SIGNS AND SIGNALS AS SHOWN ON TRAFFIC CONTROL AND PROTECTION STANDARD 701321

- LEGEND
- WORK ZONE
 - TEMP. PAVEMENT WIDING
 - TRAFFIC MOVEMENT
 - TEMPORARY CONCRETE BARRIER
 - TEMPORARY TRAFFIC SIGNAL
 - SIGN ON PORTABLE OR PERMANENT SUPPORT
 - IMPACT ATTENUATOR, TEMPORARY (FULLY REDIRECTIVE) TEST LEVEL 2
 - MICROWAVE DETECTORS

NOTE: PROVIDE TRAFFIC CONTROL STD. 701321 FOR STAGE 1B



ILLINOIS DEPARTMENT OF TRANSPORTATION
F.A.I. 55
SECTION (57-4)R, HBY, HBR, (57-4)BIDM
MCLEAN COUNTY
**MAINTENANCE OF TRAFFIC
LINDEN STREET
STAGE 1B**

REVISIONS	
NAME	DATE

JOB NO. 9452063
DATE 8/9/2009

8/9/2009
LAYOUT JHF 03/03/04
DRAWN JHF 03/03/04
REVIEWED DLH 03/18/04