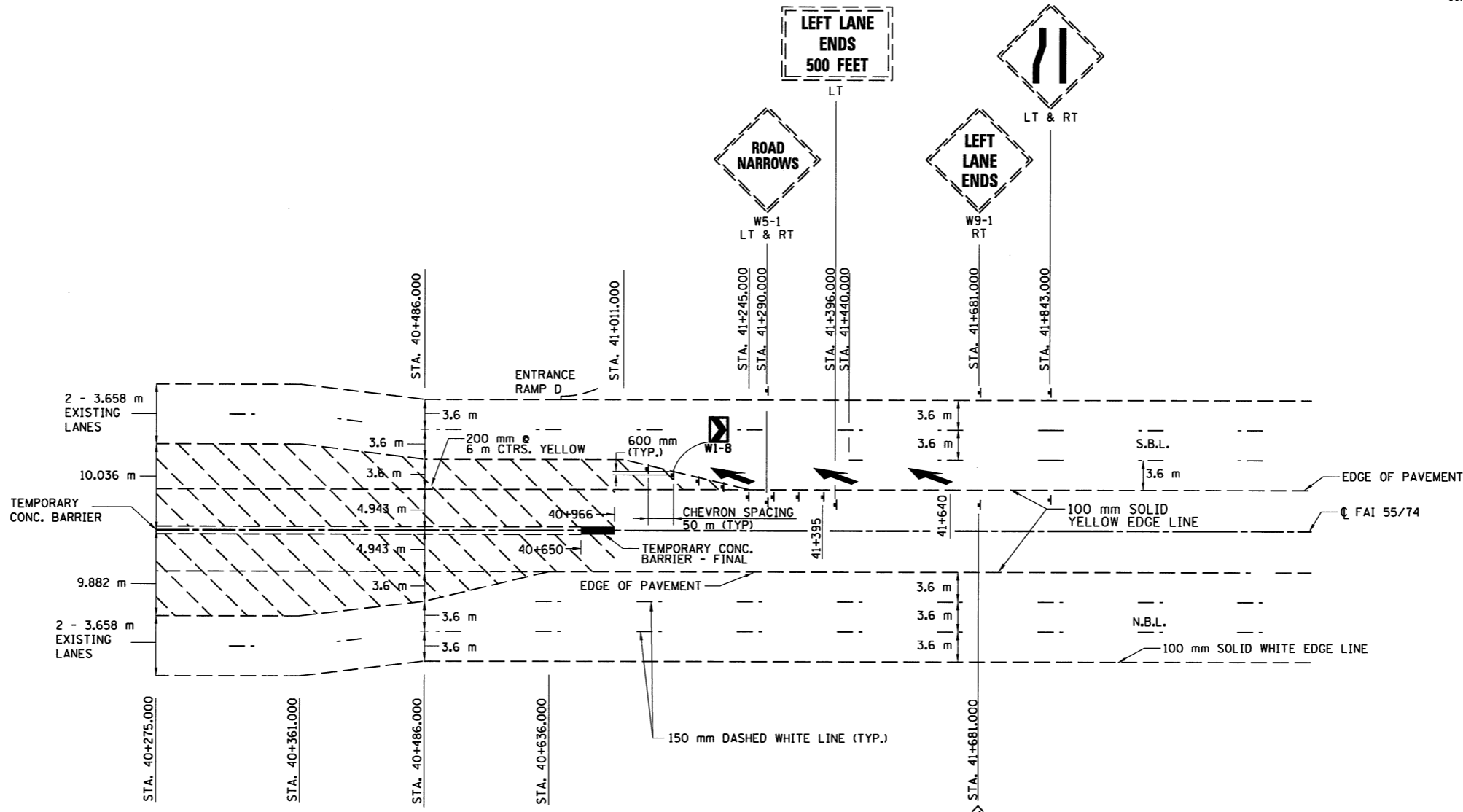


SIGN REMOVAL		
STATION	SIDE	EACH
35+550	RT	1.0
35+611	RT	1.0
35+842	RT	1.0
35+900	RT	1.0
35+955	RT	1.0
36+000	RT	1.0
36+500	CL	2.0
39+990	CL	2.0
41+145	LT	1.0
41+195	LT	1.0
41+245	LT	1.0
41+290	CL,LT	2.0
41+396	CL	1.0
41+681	CL	1.0
41+843	LT	1.0
TOTAL		18.0



	PAVEMENT MARKING REMOVAL				AREA SQ. M
	STATION	TO	STATION	SIDE	
ARROW	35+428			RT	3.9
ARROW	35+623			RT	3.9
ARROW	35+817			RT	3.9
DIAGONALS	35+839		36+064	RT	9.0
DIAGONALS	40+275		41+230	LT	110.0
ARROW	41+275			LT	3.9
ARROW	41+436			LT	3.9
ARROW	41+640			LT	3.9
				TOTAL	143.0

**EXISTING INTERIM SIGNING & PAVEMENT MARKINGS  
AT NORTH JOB LIMITS  
(SIMILAR AT SOUTH JOB LIMITS)**

- NOTES:  
1. SEE STATE STANDARD 780001 AND 781001 FOR TYPICAL PAVEMENT MARKINGS.

REVISIONS	
NAME	DATE

ILLINOIS DEPARTMENT OF TRANSPORTATION  
F.A.I. 55  
SECTION (57-4)R, HBY, HBR, (57-4)BIDM  
MCLEAN COUNTY  
**EXISTING INTERIM  
PAVEMENT MARKING PLAN**

JOB NO. 94S2063  
DATE 8/20/2009

8/20/2009  
 #FILES#  
 LAYOUT  
 DRAWN  
 REVIEWED  
 J.J.H.  
 J.J.H.  
 D.L.H.  
 03/18/04